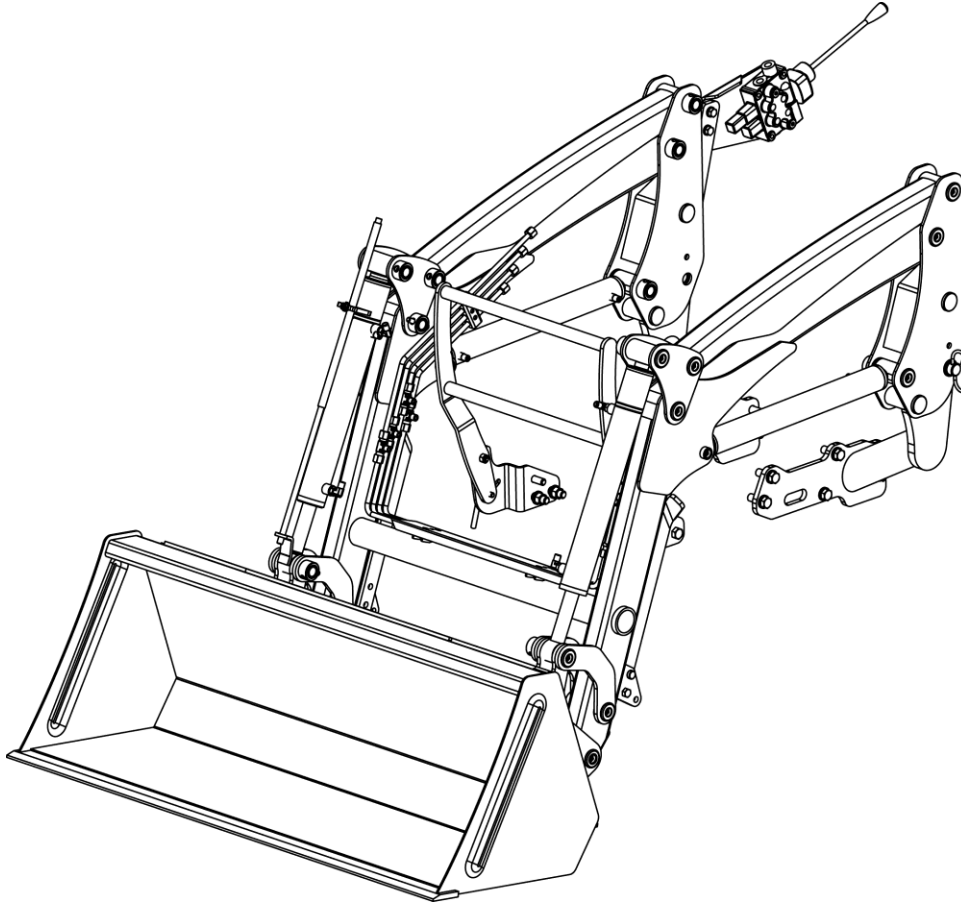



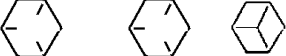

OPERATOR'S MANUAL

FOR FRONT END LOADER (BL95SL)



METRIC FASTENER(ISO) TORQUE CHART

Note: Use these torques. Unless special torques are specified. Values are for UNF thread fastener, plated or un-plated as received from supplier. Fasteners can be dry or lubricated with normal engine oil. Values do not apply if graphite, moly-disulphide or other extreme pressure lubricant is used.




SAE Grade No.	2				5				8*			
Bolt head identification (see note 1)												
Bolt size	LB FT		NM		LB FT		NM		LB FT		NM	
	Min	Max	Min	Max	Min	Max	Min	Max	Min	Max	Min	Max
1/4	5	6	7	8	9	11	12	15	12	15	16	20
5/16	10	12	14	16	17	20.5	23	28	24	29	33	39
3/8	20	23	27	31	35	42	48	57	45	54	61	73
7/16	30	35	41	47	54	64	73	80	70	84	95	114
1/2	45	52	61	70	80	96	109	130	110	132	149	179
9/16	65	75	88	102	110	132	149	179	160	192	217	260
5/8	95	105	129	142	150	180	203	244	220	264	298	358
3/4	150	185	203	251	270	324	366	439	380	456	515	618
7/8	160	200	217	271	400	480	542	651	600	720	814	976
1	250	300	339	406	580	696	787	944	900	1080	1220	1464
1 1/8					800	880	1085	1193	1280	1440	1736	1953
1 1/4					1120	1240	1519	1681	1820	2000	2468	2712
1 3/8					1460	1680	1980	2278	2380	2720	3227	3688
1 1/2					1940	2200	2631	2983	3160	3560	4285	4827

Note.1: Bolt head identification marks as per grade. Manufacturing marks will vary.

*Thick nuts must be used with Grade 8 bolt

METRIC FASTENER(ISO) TORQUE CHART

Note: Use these torques. Unless special torques are specified. Values are for UNF thread fastener, plated or un-plated as received from supplier. Fasteners can be dry or lubricated with normal engine oil. Values do not apply if graphite, moly-disulphide or other extreme pressure lubricant is used.

ISO Class No.	8.8				10.9				12.9			
Bolt head identification (see note 1)												
Bolt size	LB FT		NM		LB FT		NM		LB FT		NM	
	Min	Max	Min	Max	Min	Max	Min	Max	Min	Max	Min	Max
M4	2	3	3	4	3	4	4	5	Because of the low ductility of these fasteners, the torque range is to be determined individually for each application. As a general rule, the torque ranges specified for grade 10.9 fasteners can be used satisfactorily on 12.9 fasteners *M14 is not a preferred Size.			
M5	5	6	6.5	8	7	8	9.5	11				
M6	8	9	10.5	12	11	13	15	17.5				
M8	19	23	26	31	27	32	37	43				
M10	38	45	52	61	54	64	73	87				
M12	66	79	90	75	93	112	125	150				
* M14	106	127	144	172	149	179	200	245				
M16	160	200	217	271	230	280	310	380				
M18	203	235	275	319	286	315	388	428				
M20	320	380	434	515	450	540	610	730				
M24	500	600	675	815	780	940	1050	1275				
M30	920	1100	1250	1500	1470	1770	2000	2400				

Note: Bolt head identification marks as per grade. Manufacturing mark will vary.

PART ILLUSTRATIONS

GENERAL INFORMATION

Illustrations

The individual parts in their normal relationship to each other. Reference numbers are used in the Illustrations. These numbers correspond to those in the “Number” column and are followed by the quantity required and description.

Directional Reference

“Right hand” and “left hand” sides are determined by standing at the rear of the unit and facing in the direction of forward travel.

Part Order

Orders must give the complete description, correct part number, the total amount required, the product model, all the necessary serial numbers, the method of shipment and the shipping address.

FIG 001

BL95SL

BUCKET

P1

YEAR / MONTH

2020 / 02

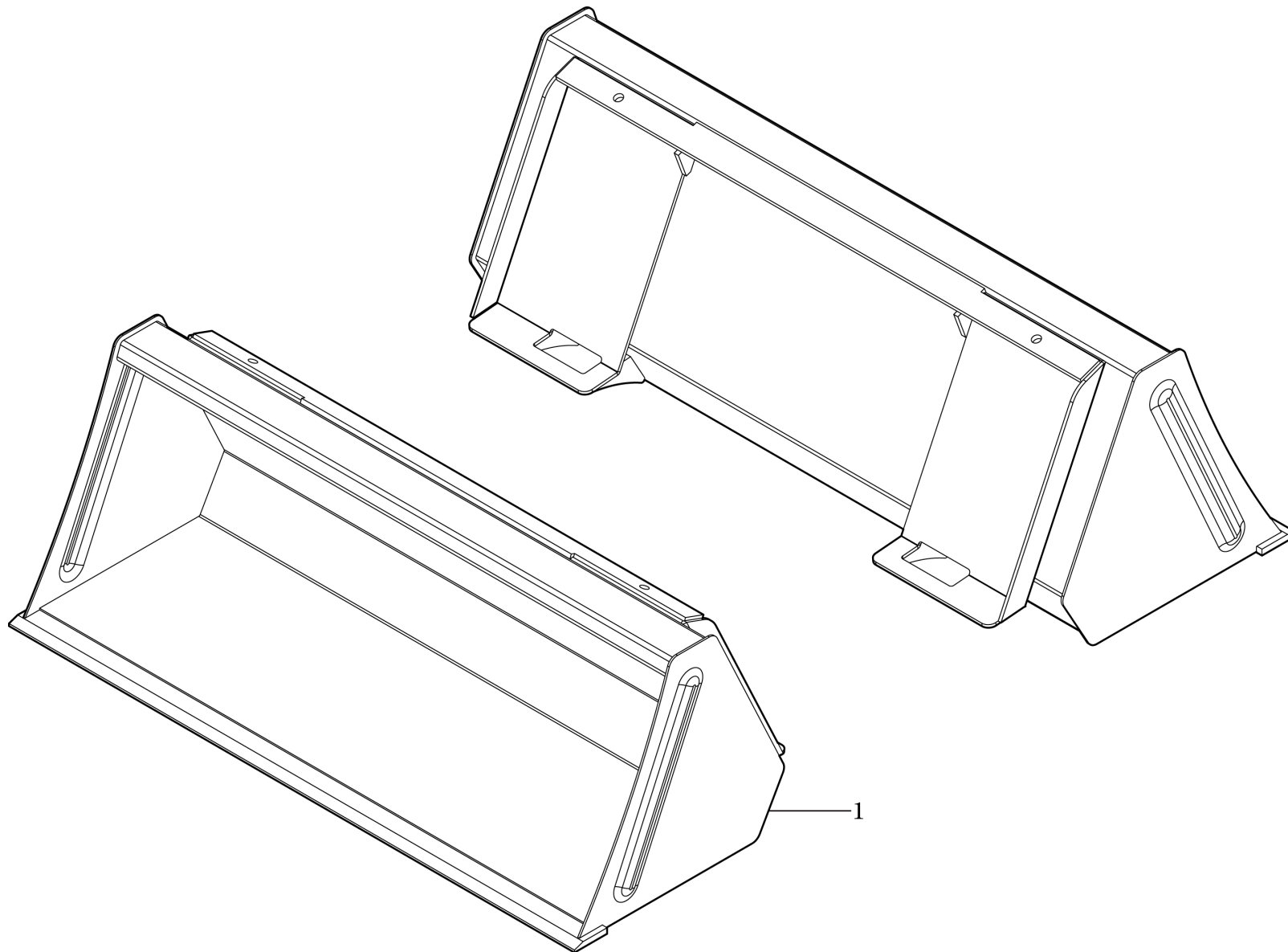


FIG 002

BL95SL

QUICK ATTACH ASS'Y

P2

YEAR / MONTH

2020/ 02

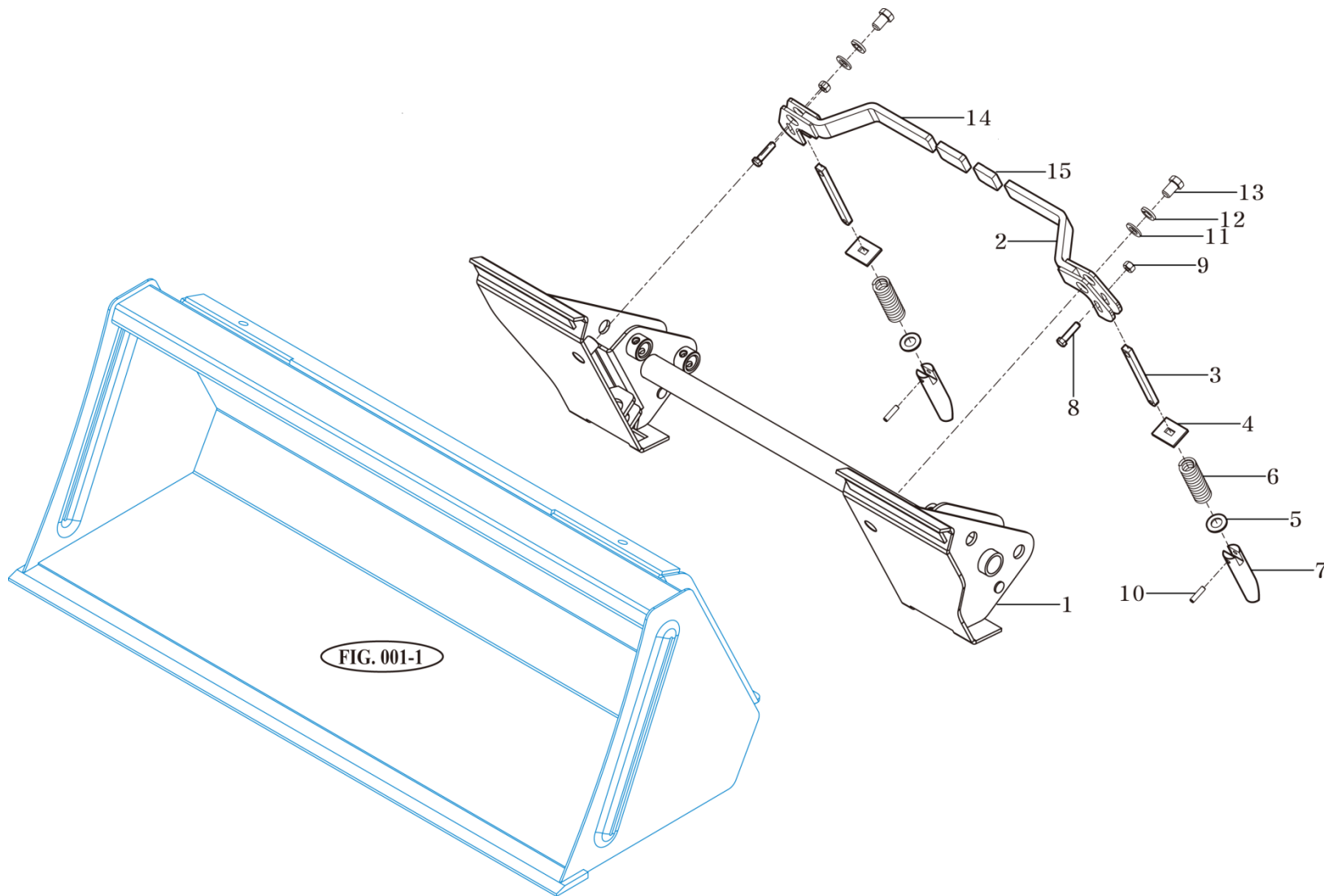


FIG. 001-1

FIG 003

BL95SL

MOUNTING FRAME ASS'Y

P1

YEAR / MONTH

2020/ 02

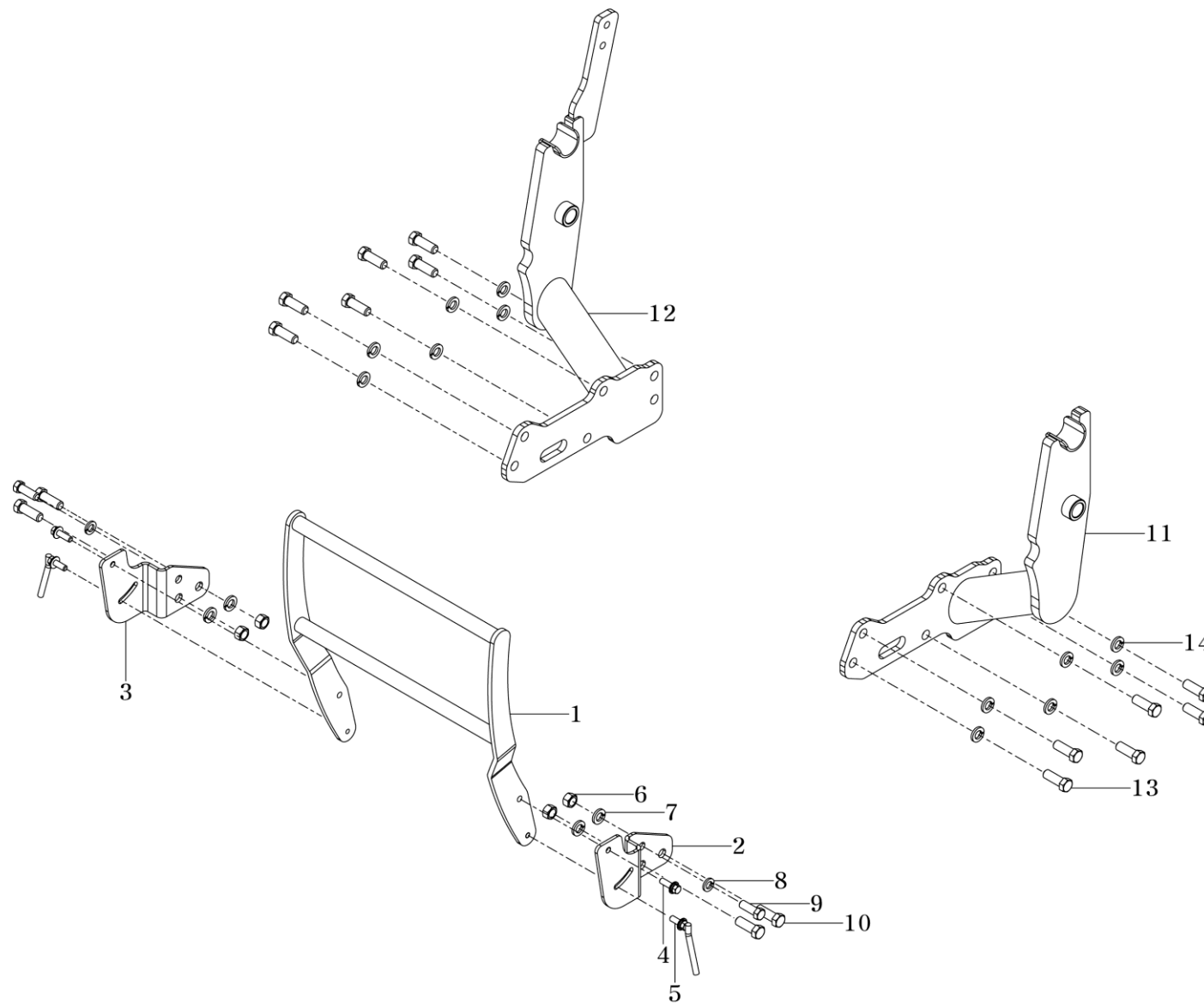


FIG 004

BL95SL

BOOM ASSEMBLY

P1

YEAR / MONTH

2020 / 02

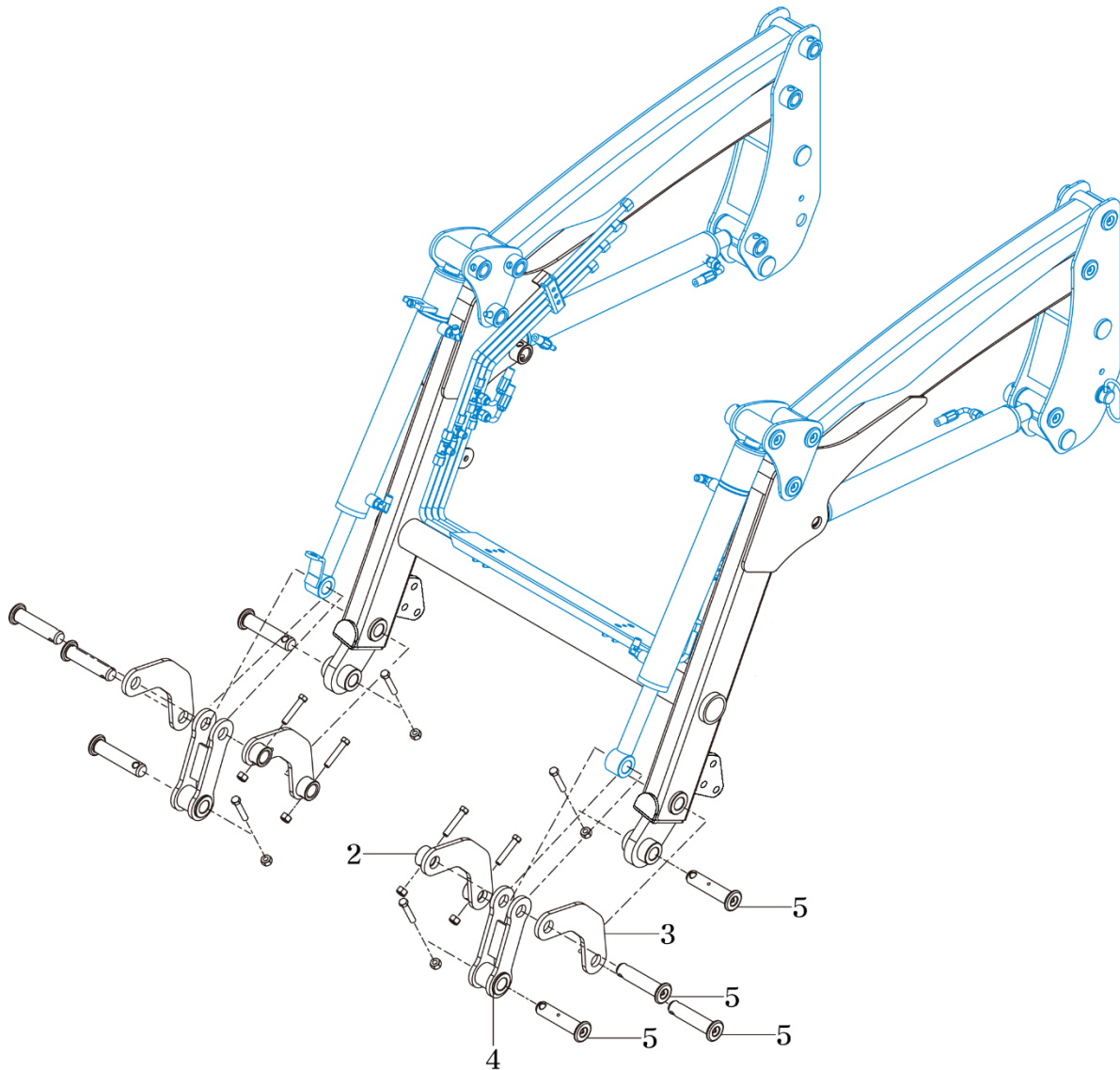


FIG 005

BL95SL

POST & SELF LEVELING LINK

P1

YEAR / MONTH

2020/ 02

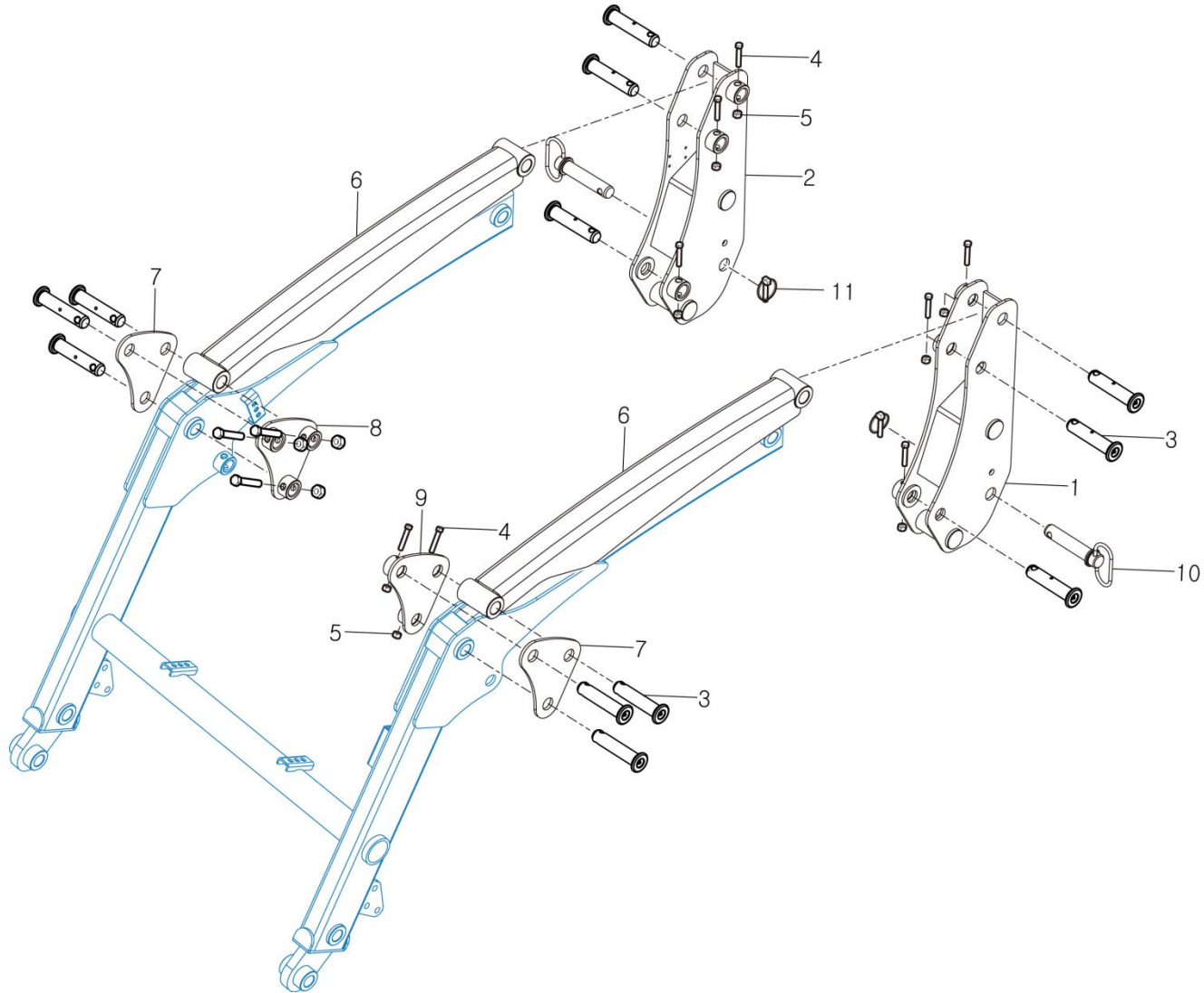


FIG 006

BL95SL

STAND

P1

YEAR / MONTH

2020/ 02

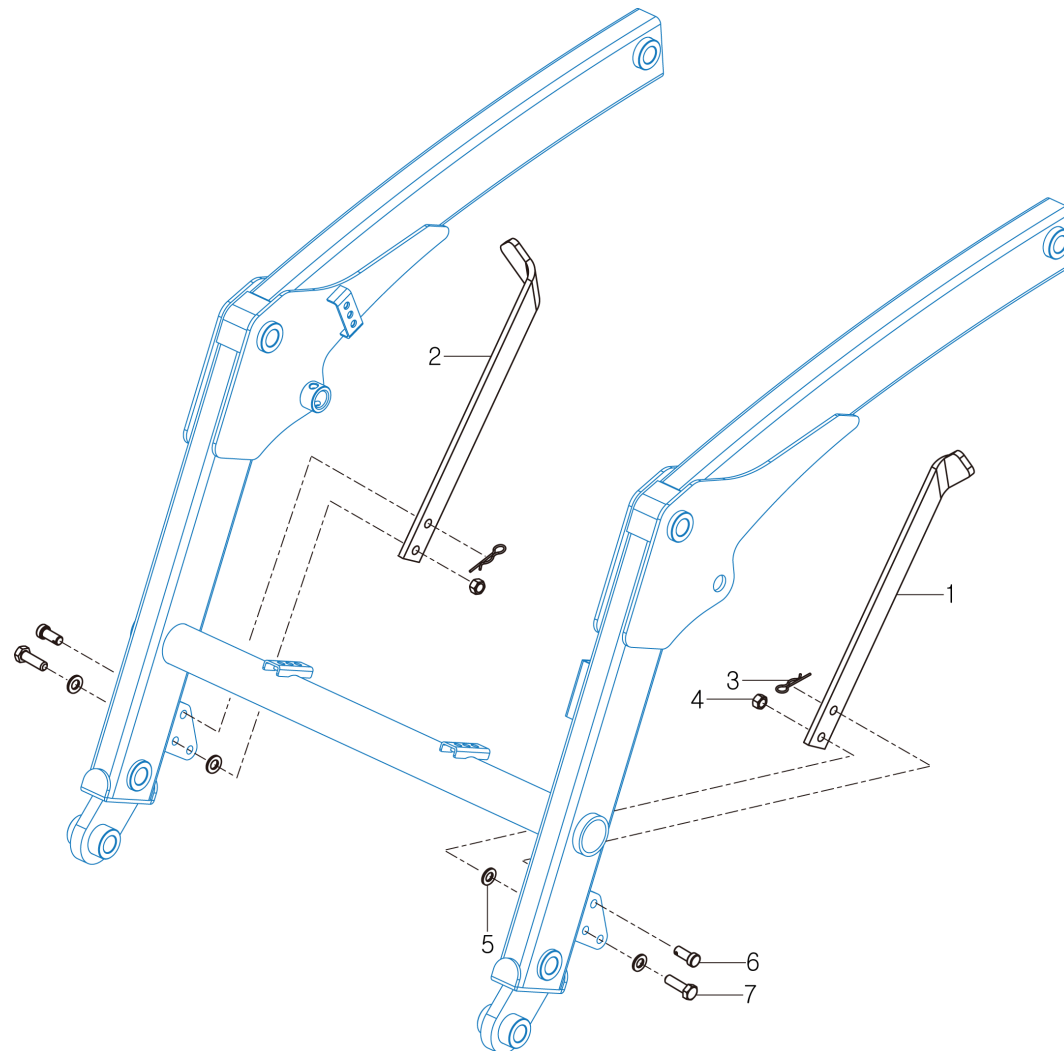


FIG 007

BL95SL

LOADER VALVE

P1

YEAR / MONTH

2020/ 02

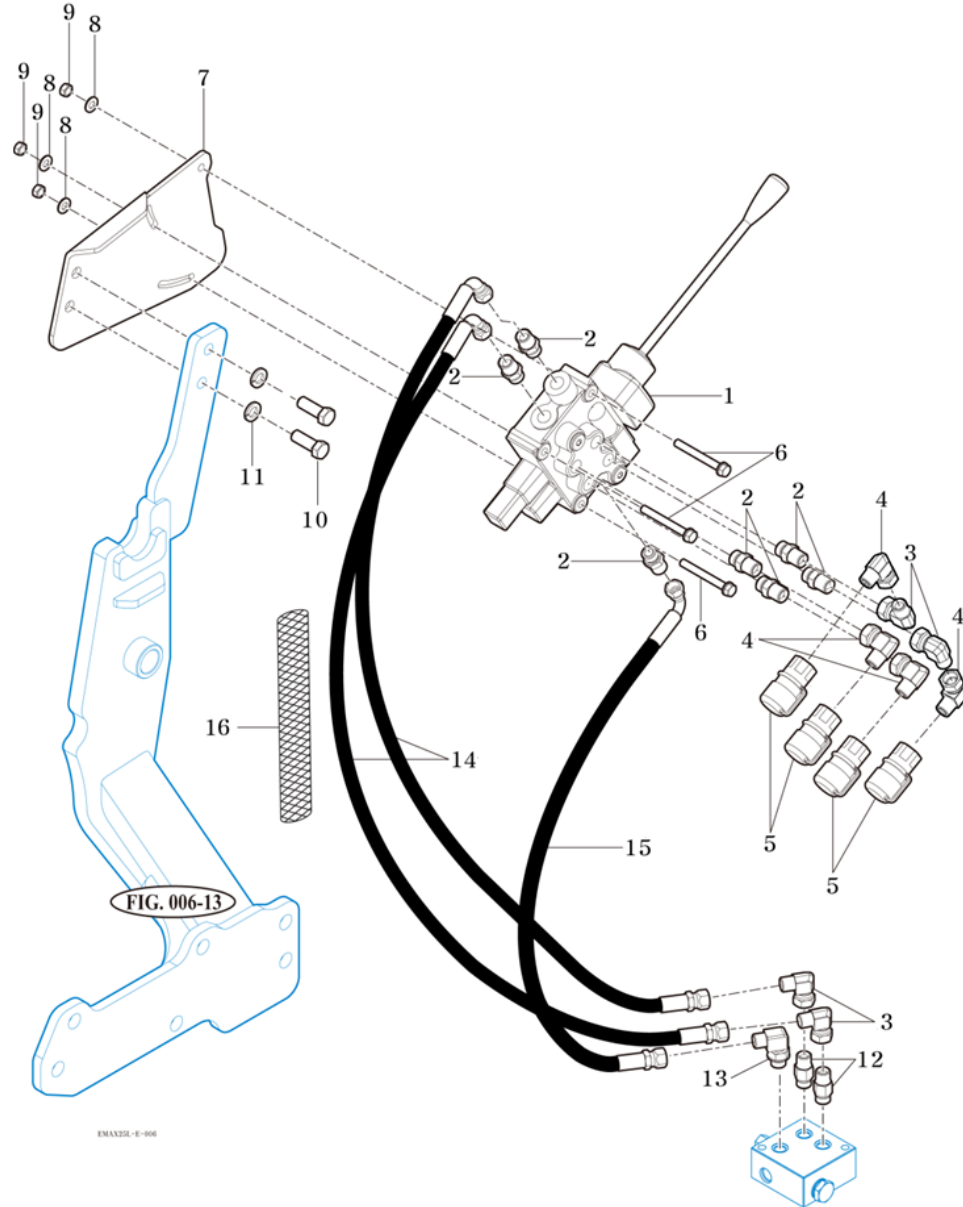


FIG. 006-13

FIG 008

BL95SL

HYDRAULIC PIPING ASSEMBLY

P1

YEAR / MONTH

2020/ 02

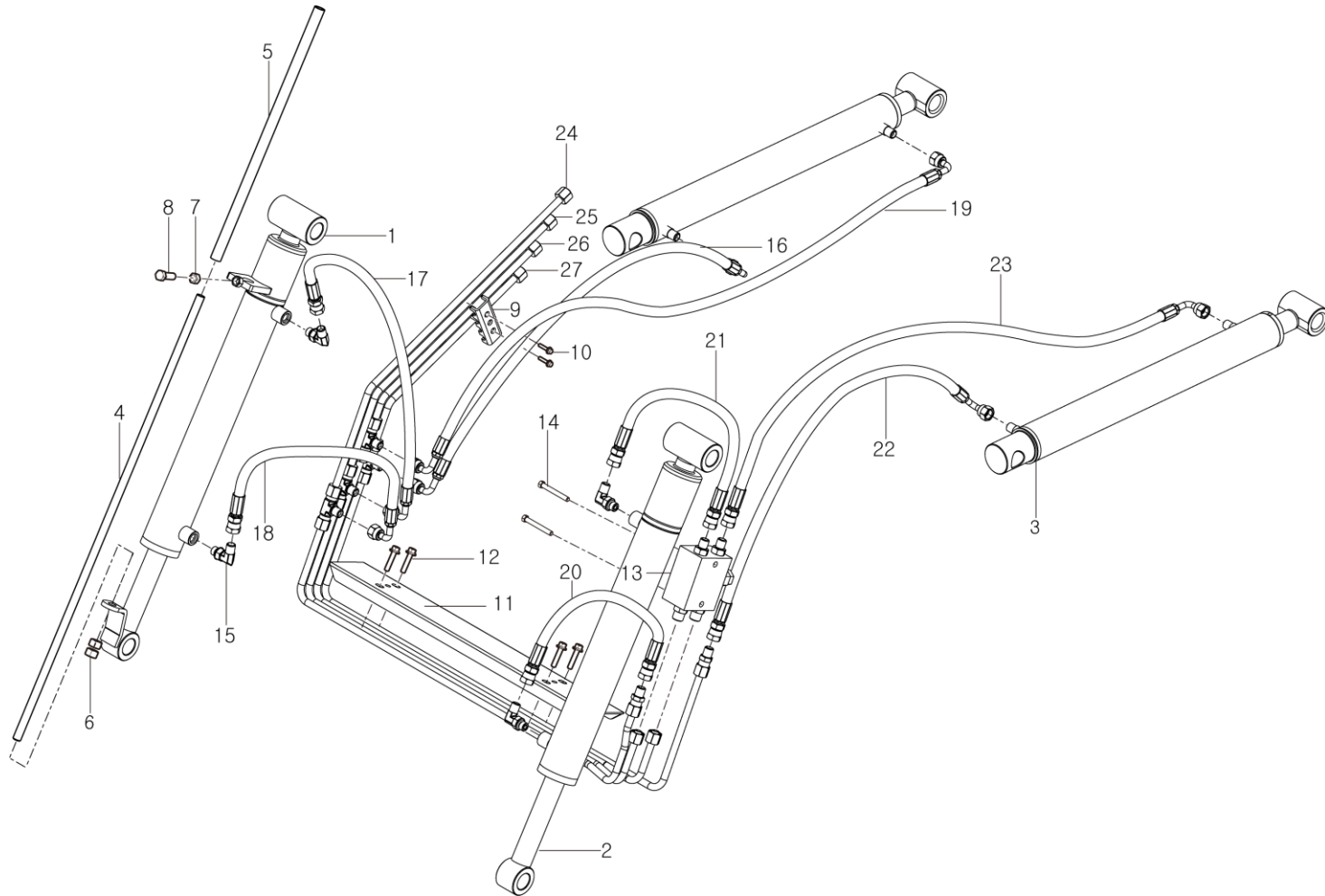



FIG 008		HYDRAULIC PIPING ASSEMBLY			P1	Year/Month 2020/02	
KEY NO.	PART NO.	DESCRIPTION	SPEC.	QTY.	EFFECTIVE DATE	REMARKS	
008	001	87603002001GB	BUCKET CYLINDER RH		1		
008	002	87603001001GB	BUCKET CYLINDER LH		1		
008	003	87503003004GB	BOOM CYLINDER		2		
008	004	87603000292	STUD	725mm	1		
008	005	85403000302	GUIDE	410mm	1		
008	006	V3043600120	NUT , HEX	M12	2		
008	007	V3043600100	NUT , HEX	M10	1		
008	008	V2013610030	BOLT , HEX	M10X30	1		
008	009	85102000050	BRACKET A	3.2T	1		
008	010	V2183608035	BOLT , HEX	M8X35	2		
008	011	87503009101BR	COVER , PIPE		1		
008	012	V2183608030	BOLT , HEX	M8X30	4		
008	013	87603000701	RELIEF VALVE ASSY		1		
008	014	V2183608065	BOLT , HEX	M8X65	2		
008	015	19027562050	ELBOW , PF1/4 - PF1/4		4		
008	016	85363009030	HYD HOSE , 280/90°-90°	PF1/4, 90°-90°	1		
008	017	88103009480	HYD HOSE , 520/90°	PF1/4, 90°	1		
008	018	85363009040	HYD HOSE , 600/90°	PF1/4, 90°	1		
008	019	87503009220	HYD HOSE , 700/90°-90°	PF1/4, 90°-90°	1		
008	020	87603009011	HYD HOSE , 600	PF1/4	1		
008	021	81103004131	HYD HOSE , 460/90°	PF1/4, 90°	1		
008	022	87503009051	HYD HOSE , 350/90°	PF1/4, 90°	1		
			<NEXT>				

FIG 008

BL95SL

HYDRAULIC PIPING ASSEMBLY

P2

YEAR / MONTH

2020/ 02

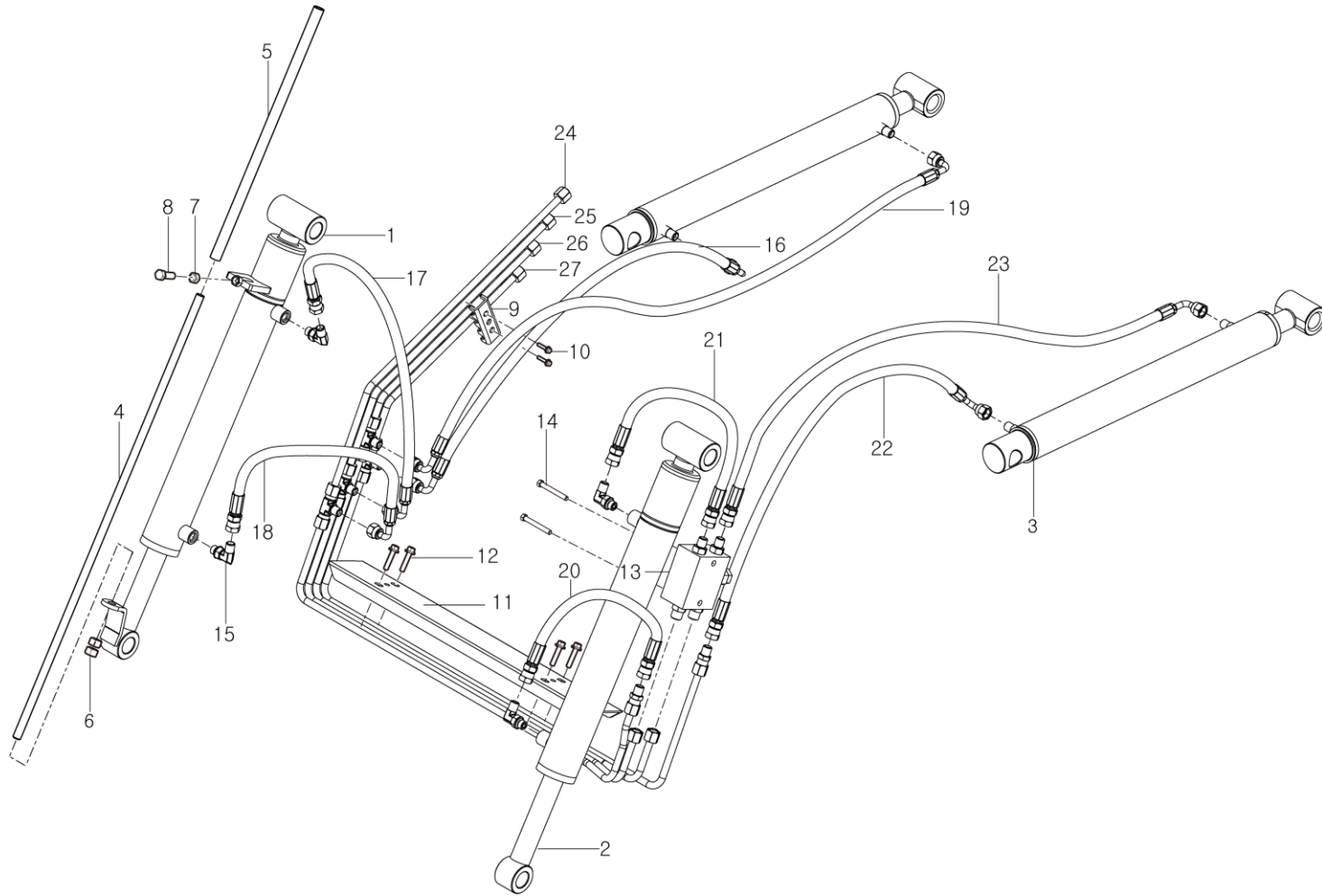


FIG 009

BL95SL

BUCKET CYLINDER

P1

YEAR / MONTH

2020/ 02

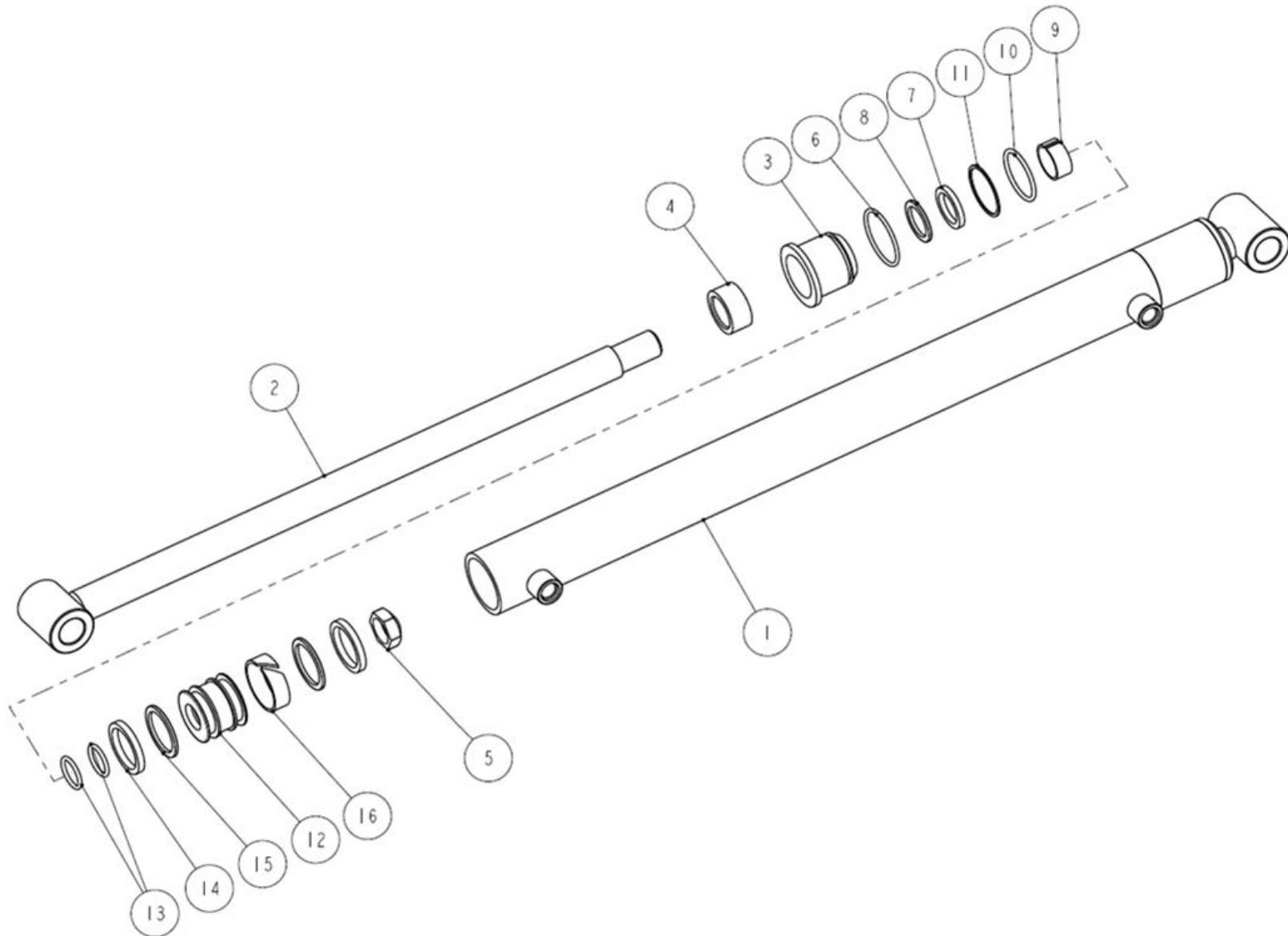


FIG 010

BL95SL

BOOM CYLINDER

P1

YEAR / MONTH

2020 / 02

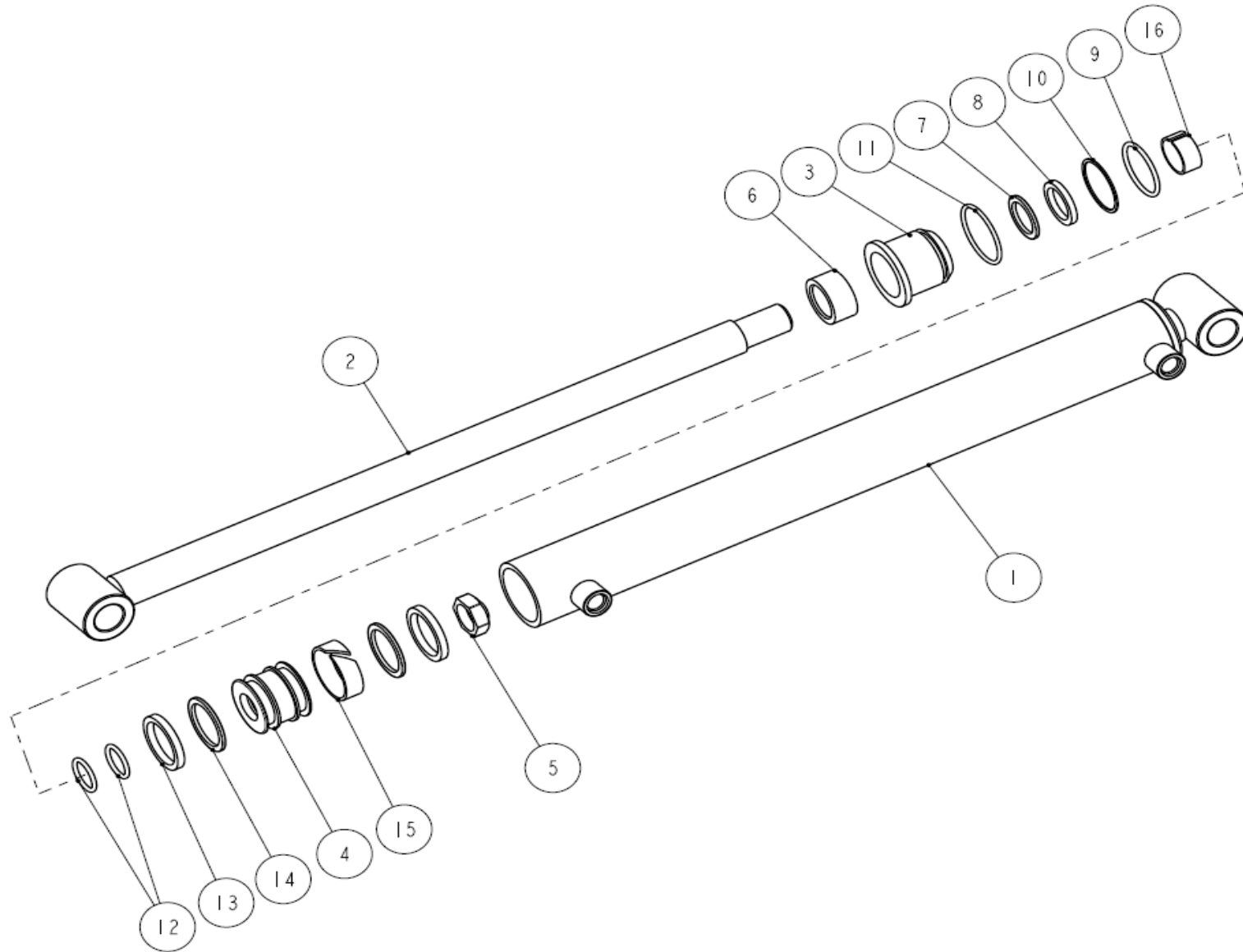


FIG 011

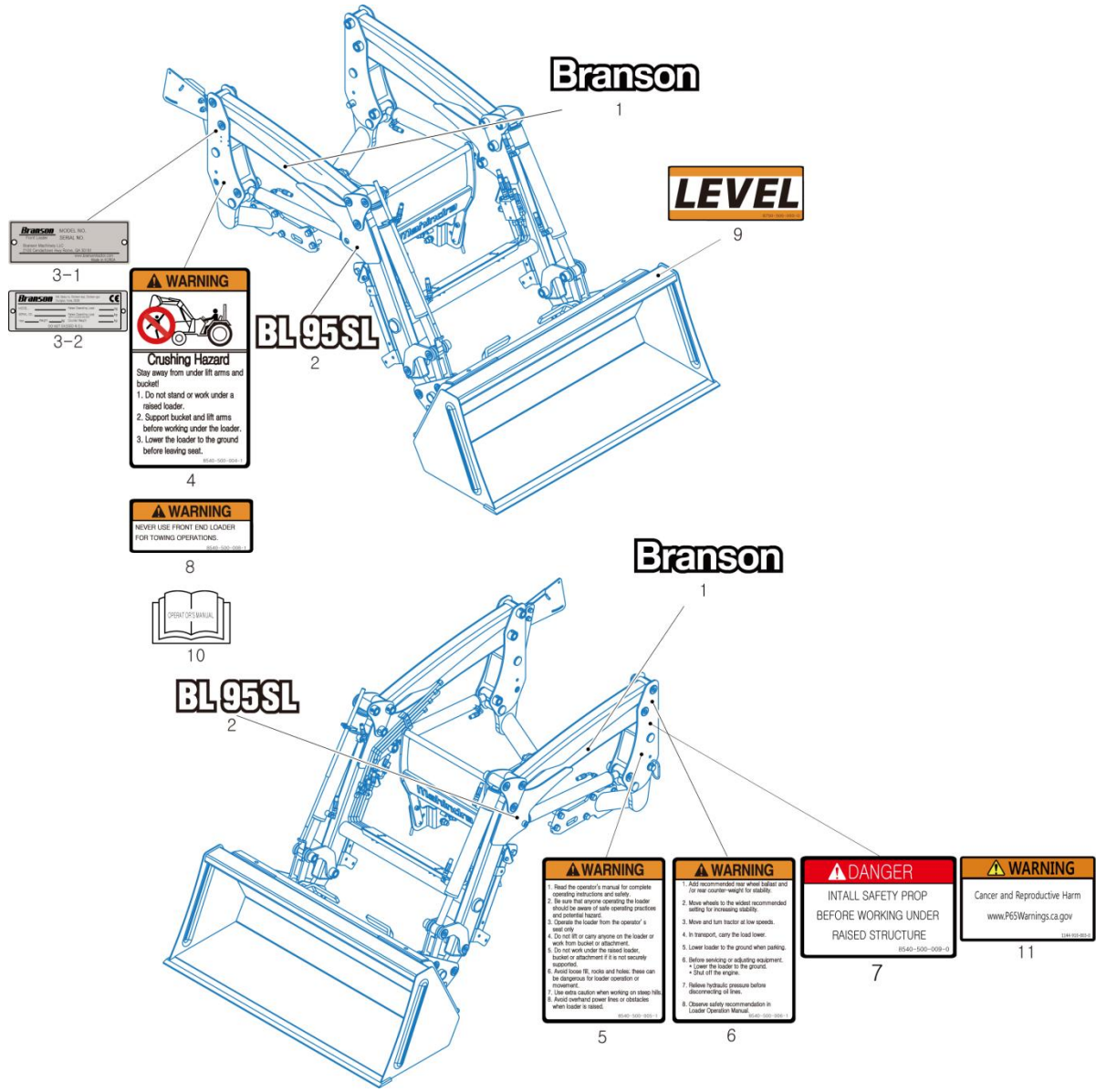
BL95SL

DECAL

P1

YEAR / MONTH

2020/ 02



LOADER INSTALLATION

CAUTION:

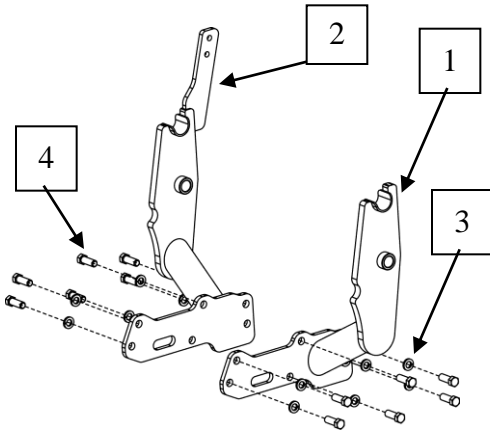
See your Loader Operator's manual for Safety Precautions and Tractor Preparations

STEP 1.

Position tractor on hard level surface.

STEP 2.

Release loader, bucket and mount kit box from pallet.



STEP 3.

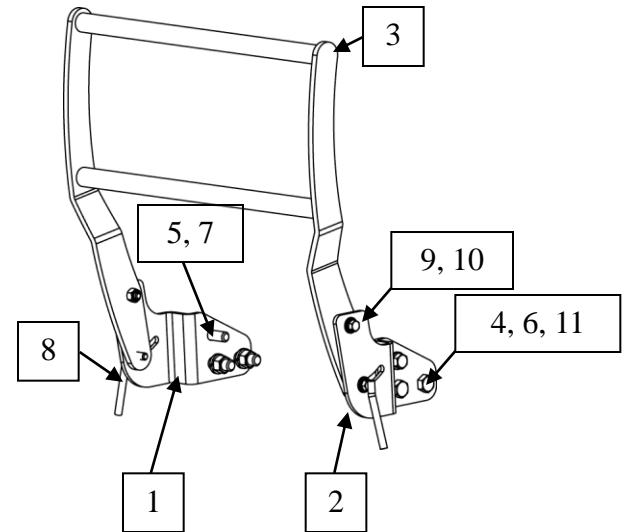
Install Mounting Frame-L and mounting Frame-R

- (1) Mounting Frame-LH : 1EA
- (2) Mounting Frame-RH : 1EA
- (3) Hex Head Bolt M16X2.0PX45L : 12EA
- (4) Spring Washer \emptyset 16: 12EA

STEP 4.

Install Grill Guard

- (1) Bracket , Grill Guard-LH : 1EA
- (2) Bracket , Grill Guard-RH : 1EA
- (3) Grill Guard Comp : 1EA
- (4) Hex Head Bolt M16X2.0PX45L : 4EA
- (5) Hex Head Bolt M14X2.0PX40L : 2EA
- (6) Spring Washer \emptyset 16 : 4EA
- (7) Spring Washer \emptyset 14 : 2EA
- (8) Lever Bolt M10XP1.5 : 2EA
- (9) Hex Head Bolt(SP) M10XP1.5X35L : 2EA
- (10) U NUT M10 : 2EA
- (11) Hex Head Nut M16X2.0P :4EA

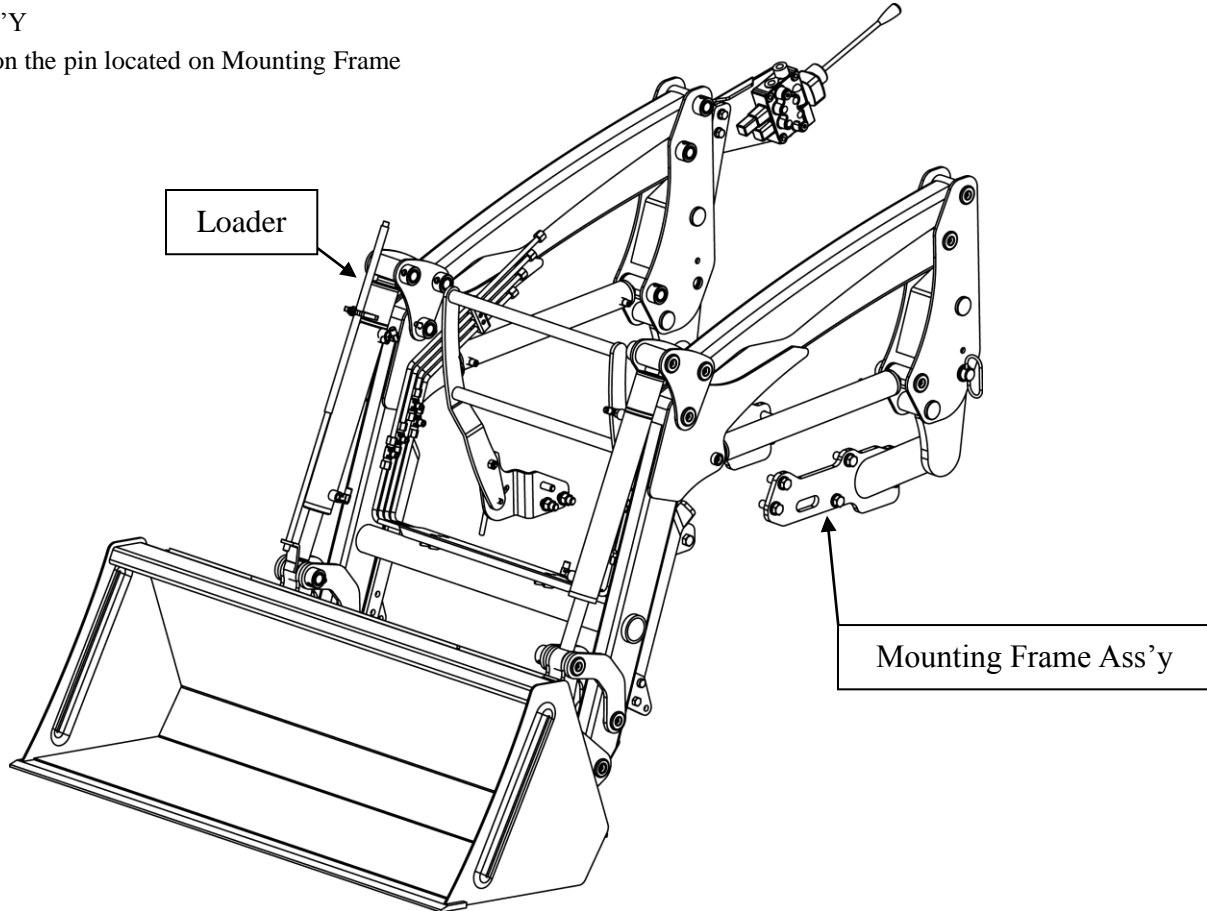


LOADER INSTALLATION

STEP 5.

Install Boom ASS'Y

Hang the groove on the pin located on Mounting Frame

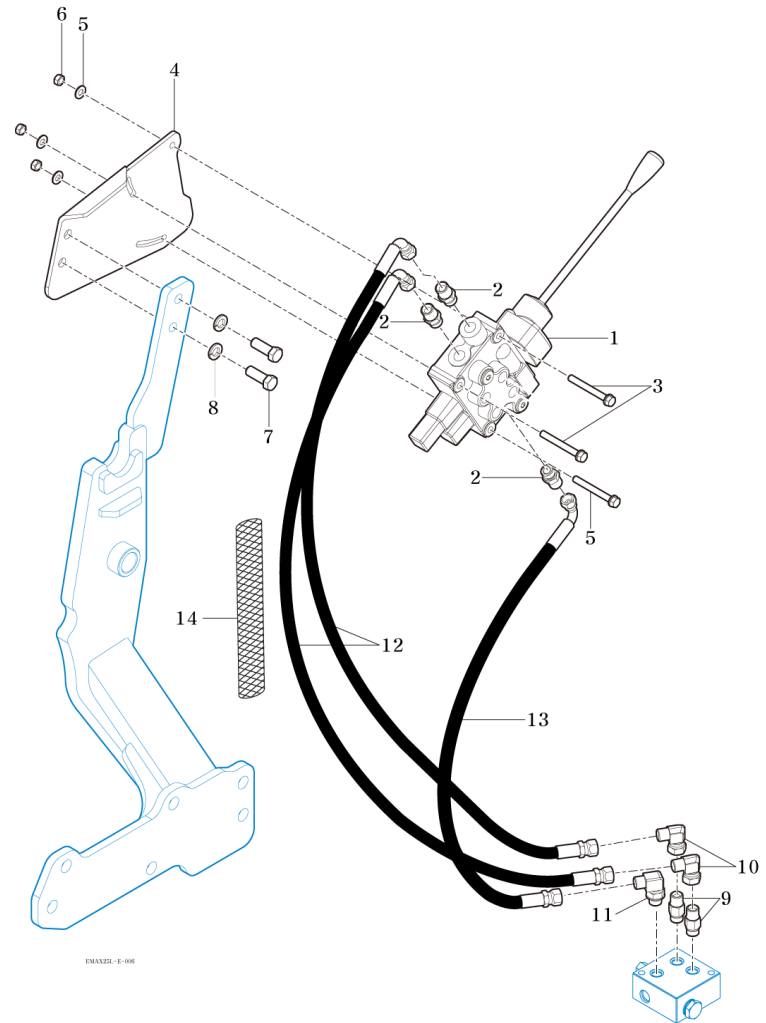
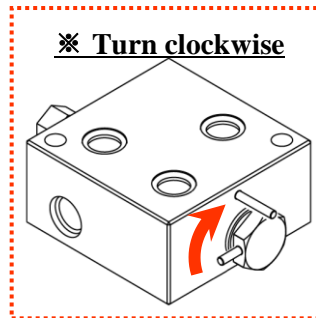


LOADER INSTALLATION

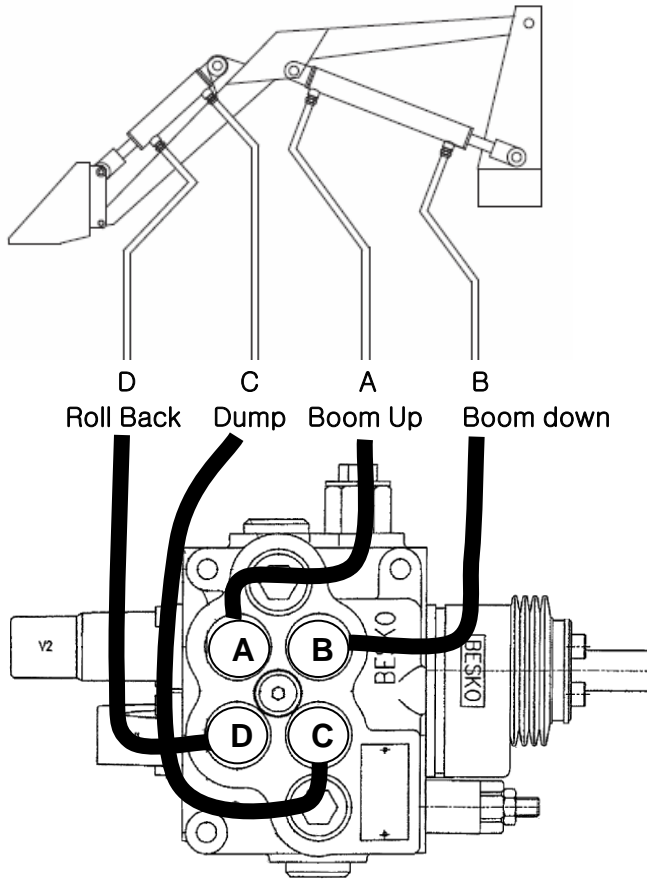
STEP 6.

Install Hydraulic Line

- (1) Valve (Joystick) ASS'Y : 1EA
- (2) Union PF3/8 : 3EA
- (3) Hex Head Bolt/S M8X1.25PX70L :3EA
- (4) Plate (Valve) : 1EA
- (5) Plain Washer \varnothing 8 : 3EA
- (6) Hex Head Nut M8X1.25P : 3EA
- (7) Hex Head Bolt M12X1.75PX40L : 2EA
- (8) Spring Washer \varnothing 12 : 2EA
- (9) Union PF3/8-41 : 2EA
- (10) Elbow PF3/8 : 2EA
- (11) Elbow PF3/8 : 1EA
- (12) Hydraulic Hose 980L : 2EA
- (13) Hydraulic Hose 820L : 1EA
- (14) Hose cover 300L : 1EA



LOADER INSTALLATION



STEP 7.

Install Hydraulic Line

- (1) Union PF3/8 : 4EA
- (2) Elbow PF3/8 : 2EA
- (3) Elbow PF3/8-PT3/8 : 4EA
- (4) Quick Coupler PT3/8 : 4EA

