

# CAIMAN

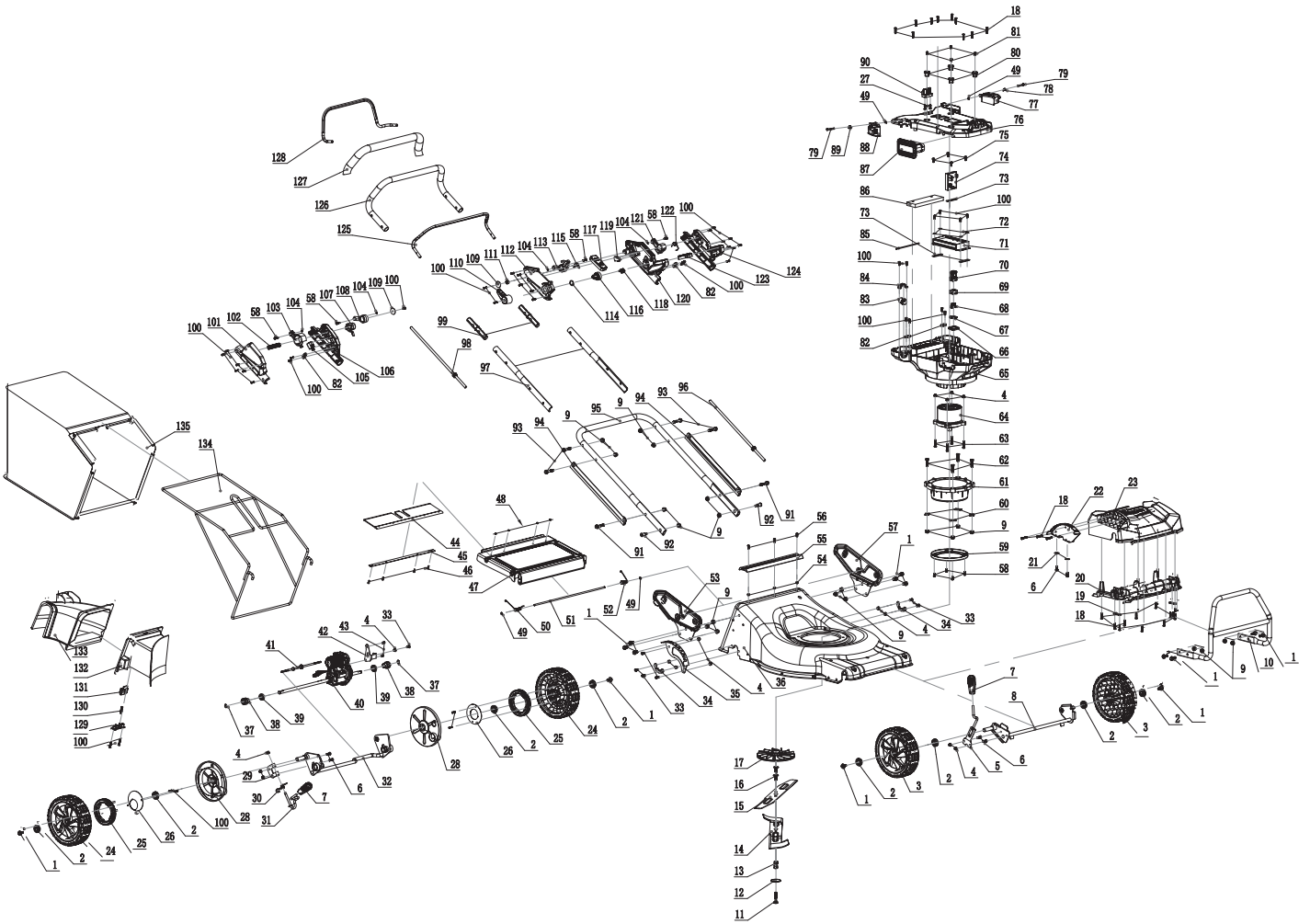
---

Газонокосилка  
аккумуляторная  
**ENO LMXi(56)**



# CAIMAN

## ENO LMXi(56)



# **CAIMAN**

<b>N°</b>	<b>Description</b>	<b>Part Number</b>	<b>Qty (UOM)</b>
1	M8x18 Hex Flange Special Bolt \ Blue and White Zinc Plated	CELM-0001	14
2	Deep Groove Ball Flange Bearing F6002-2RS \ Natural Color	CELM-0002	8
3	9-inch Push Wheel \ RAL7015 Grey \ NBR RAL9017 Black	CELM-0003	2
4	M6 Non-metallic Insert Hex Flange Lock Nut \ Black Zinc Plated	CELM-0004	16
5	Front Adjustment High Rod \ Black Electrophoresis	CELM-0005	1
6	M6x20-T30 Internal Hexagon Flower Head Screw \ Black Zinc Plated	CELM-0006	6
7	Adjustment Handle \ RAL2003 Orange	CELM-0007	2
8	Front Wheel Axle Assembly \ Black Electrophoresis	CELM-0008	1
9	M8 Non-metallic Hex Flange Lock Nut \ Blue and White Zinc Plated	CELM-0013	22
10	Bumper Bar \ Spray Coating \ RAL2003 Orange	CELM-0012	1
11	M10x45 Hex Head Bolt \ Black Zinc Plated	CELM-0018	1
12	Butterfly Washer \ Black Zinc Plated	CELM-0019	1
13	M10x1-1 Type Non-metallic Insert Hex Lock Nut Fine Thread \ Black Zinc Plated	CELM-0020	2
14	540 Mulching Blade \ Black Spray Coating	CELM-0021	1
15	530 Straight Blade \ Black Spray Coating	CELM-0022	1
16	M10x22 Square Neck Special Bolt \ Black Zinc Plated	CELM-0023	2
17	Blade Holder \ Natural Color	CELM-0024	1
18	ST4.8x20-T25 Internal Hexagon Flower Head Self-tapping Screw \ Black Zinc Plated	CELM-0009	24
19	Front Wheel Axle Press Plate \ White Zinc Plated	CELM-0010	2
20	Front Decorative Cover Base \ RAL2003 Orange	CELM-0011	1
21	Flat Washer $\phi 6.3 \times \phi 20 \times 3$ \ White Zinc Plated	CELM-0015	2
22	Front Gear Plate \ Black Electrophoresis	CELM-0016	1

# **CAIMAN**

<b>N°</b>	<b>Description</b>	<b>Part Number</b>	<b>Qty (UOM)</b>
23	Front Decorative Cover \ RAL7015 Grey	CELM-0017	1
24	9-inch Self-propelled Wheel \ RAL7015 Grey \ NBR RAL9017 Black	CELM-0026	2
25	Large Gear \ Natural Color	CELM-0027	2
26	Gear Press Plate \ White Zinc Plated	CELM-0028	2
27	ST3.9x16-T20 Internal Hexagon Flower Head Self-tapping Screw \ Black Zinc Plated	CELM-0116	2
28	Dust Cover \ RAL9017 Black	CELM-0030	2
29	Adjustment Rod Bracket \ Black Electrophoresis	CELM-0032	1
30	Adjustment Torsion Spring \ Black Zinc Plated	CELM-0033	1
31	Rear Adjustment Rod \ Black Electrophoresis	CELM-0034	1
32	Rear Wheel Axle Assembly \ Black Electrophoresis	CELM-0037	1
33	M6x16-T30 Internal Hexagon Flower Head Screw \ Black Zinc Plated	CELM-0038	7
34	Wheel Axle Positioning Plate \ White Zinc Plated	CELM-0039	2
35	Rear Gear Plate \ Black Electrophoresis	CELM-0041	1
36	Iron Chassis 22-inch \ Spray Coating RAL9017 Black \ RAL2003 Orange	CELM-0042	1
37	Axle Retaining Ring 12 \ Black Oxide	CELM-0047	2
38	Small Gear \ Natural Color	CELM-0048	2
39	Deep Groove Ball Bearing R8RS \ Natural Color	CELM-0049	2
40	Self-propelled Machine \ 54V \ Natural Color	CELM-0050	1
41	Self-propelled Cable \ Black	CELM-0051	1
42	Self-propelled Positioning Plate \ Black Electrophoresis	CELM-0052	1
43	ST4.8x16-T25 Internal Hexagon Flower Head Self-tapping Screw \ Black Zinc Plated	CETC-0017	2
44	Protective Strip Press Plate \ Black Electrophoresis	CELM-0065	1
45	Rubber Protective Strip \ Black	CELM-0066	1
46	M4x10-T20 Flower Shape Screw \ Black Zinc Plated	CELM-0067	4
47	Iron Rear Cover Plate \ Black Spray Coating	CELM-0068	1

# **CAIMAN**

<b>N°</b>	<b>Description</b>	<b>Part Number</b>	<b>Qty (UOM)</b>
48	M4 Cap Nut \ Black Zinc Plated	CELM-0069	4
49	Open Retaining Ring 5 \ Black Oxide	CELM-0054	1
50	Right Rear Cover Torsion Spring \ Black Zinc Plated	CELM-0055	2
51	Rear Cover Axle \ Natural Color	CELM-0056	1
52	Left Rear Cover Torsion Spring \ Black Zinc Plated	CELM-0057	1
53	Right Support Plate \ Black Electrophoresis	CELM-0043	1
54	M5 Non-metallic Insert Hex Flange Lock Nut \ Black Zinc Plated	CELM-0073	3
55	Dust Protective Strip \ RAL7015 Grey	CELM-0074	1
56	M5x16-T25 Internal Hexagon Flower Head Screw \ Black Zinc Plated	CELM-0075	3
57	Left Support Plate \ Black Electrophoresis	CELM-0044	1
<b>58-90</b>	<b>60V Power Head Assembly (GT Self-propelled), RAL2003 Orange, RAL7015 Grey</b>	<b>CELM-0116</b>	<b>1</b>
58	M4x20-T20 Internal Hexagon Flower Head 3-in-1 Combination Screw \ Black Zinc Plated	CELM-0081	8
59	Motor Base Cover \ RAL9017 Black	CELM-0117	1
60	Power Head Washer \ White Zinc Plated	CELM-0118	4
61	Motor Mount \ Natural Color Sandblasted	CELM-0119	1
62	M8x30 Hex Bolt \ Black Zinc Plated	CELM-0120	4
63	M6x30 Hex Bolt \ Dacromet Plated \ T.PSA20.30	CELM-0121	4
64	Brushless Outer Rotor Motor \ Natural Color	CELM-0122	1
65	Lower Machine Shell \ RAL7015 Grey	CELM-0123	1
66	Safety Key Rubber Pad \ Black	CELM-0124	1
67	Key Press Plate \ RAL9017 Black \ T.PHB40.14	CELM-0125	1
68	Female Connector \ Nickel Plated Surface \ T.PHA60.59	CELM-0126	4
69	Key Socket \ RAL9017 Black \ T.PHB40.13	CELM-0127	1
70	40V Power Head Key \ 3020 Red	CELM-0128	1
71	Main Controller \ Natural Color	CELM-0129	1
72	Large Washer 4 \ Black Oxide	CELM-0130	4
73	Rubber Pad \ Black	CELM-0131	3

# **CAIMAN**

<b>N°</b>	<b>Description</b>	<b>Part Number</b>	<b>Qty (UOM)</b>
74	Self-propelled Controller \ Natural Color	CELM-0132	1
75	M5x20-T25 Internal Hexagon Flower Head 3-in-1 Combination Screw \ Black Zinc Plated	CELM-0133	4
76	Upper Machine Shell \ RAL7015 Grey	CELM-0134	1
77	Safety Key Waterproof Cover \ RAL2003 Orange Semi-transparent	CELM-0135	1
78	Safety Key Torsion Spring \ White Zinc Plated	CELM-0136	1
79	Rotating Pin \ White Zinc Plated	CELM-0137	2
80	Rubber Plug \ Black	CELM-0138	4
81	ST3x9-H-C Cross Slotted Self-tapping Screw \ White Zinc Plated	CELM-0139	4
82	Wire Press Plate \ Natural Color	CELM-0082	4
83	Power Connector Socket \ Natural Color	CEBV-0039	1
84	Socket Fixing Block \ Natural Color	CELM-0140	1
85	Internal Wire \ Red	CELM-0141	1
86	Sponge Pad \ Black	CELM-0142	1
87	Winding Fixing Seat \ RAL2003 Orange	CELM-0143	1
88	Battery Pack Connector Waterproof Cover \ RAL2003 Orange	CELM-0144	1
89	Connector Socket Torsion Spring \ Black Zinc Plated	CELM-0145	1
90	Battery Pack Fixing Bracket \ RAL7015 Grey	CELM-0146	1
91	M8x35 Low Square Neck Bolt \ Blue and White Zinc Plated	CELM-0077	2
92	Arc Head Step Bolt M8x30 \ Blue and White Zinc Plated	CELM-0076	2
93	M8x44 Arc Head Square Neck Bolt \ Blue and White Zinc Plated	CELM-0079	4
94	Wire Protection Tube \ Spray Coating \ RAL9017 Black	CELM-0078	2
95	Lower Push Rod \ Spray Coating \ RAL9017 Black	CELM-0080	1
96	Display Screen Cable \ Black	CELM-0083	1
97	Middle Push Rod \ Spray Coating \ RAL9017 Black	CELM-0084	2
98	Main Blade Cable \ Black	CELM-0085	1

# **CAIMAN**

<b>N°</b>	<b>Description</b>	<b>Part Number</b>	<b>Qty (UOM)</b>
99	Insulation Sleeve \ Black	CELM-0086	2
100	ST4.2x20-F Internal Hexagon Flower Head Self-tapping Screw \ Black Zinc Plated	CELM-0029	42
101	Start Switch Box Right Cover \ RAL7015 Grey	CELM-0088	1
102	Start Spring \ White Zinc Plated	CELM-0089	1
103	Start Pull Rod Right Fixing Seat \ RAL7015 Grey	CELM-0090	1
104	M4 Hex Thin Nut \ Black Zinc Plated	CELM-0091	4
105	Micro Switch \ Natural Color	CELM-0092	1
106	Start Switch Box Left Cover \ RAL7015 Grey	CELM-0093	1
107	Start Switch Box Button \ RAL2003 Orange	CELM-0094	1
108	Self-propelled Pull Rod Right Fixing Seat \ RAL7015 Grey	CELM-0095	1
109	Large Washer \ Black Zinc Plated	CELM-0096	2
110	Speed Adjustment Knob \ RAL2003 Orange	CELM-0097	1
111	Bushing Washer \ White Zinc Plated	CELM-0098	1
112	Self-propelled Switch Box Right Cover \ RAL7015 Grey	CELM-0099	1
113	Self-propelled Pull Rod Left Fixing Seat \ RAL7015 Grey	CELM-0100	1
114	O-ring \ Black	CELM-0101	1
115	Self-propelled Torsion Spring \ White Zinc Plated	CELM-0102	1
116	Dial Block Fixing Seat \ Natural Color	CELM-0103	1
117	Button Box Assembly \ RAL7015 Grey	CELM-0104	1
118	Speed Controller Assembly \ Natural Color	CELM-0105	1
119	Micro Switch \ Natural Color	CELM-0106	1
120	Self-propelled Switch Box Fixing Seat \ RAL7015 Grey	CELM-0107	1
121	Start Pull Rod Left Fixing Seat \ RAL7015 Grey	CELM-0108	1
122	Start Torsion Spring \ White Zinc Plated	CELM-0109	1
123	Display Screen Assembly \ RAL7015 Grey	CELM-0110	1
124	Self-propelled Switch Box Left Cover \ RAL7015 Grey	CELM-0111	1
125	Main Blade Pull Rod \ Spray Coating \ RAL2003 Orange	CELM-0112	1

# **CAIMAN**

N°	Description	Part Number	Qty (UOM)
126	Upper Push Rod \ Spray Coating \ RAL9017 Black	CELM-0113	1
127	Sponge Sleeve \ Black	CELM-0114	1
128	Self-propelled Pull Rod \ Spray Coating \ RAL9017 Black	CELM-0115	1
<b>129 - 133</b>	<b>Grass Blocking Plug Assembly, RAL2003 Orange, RAL9017 Black</b>	<b>CELM-0058</b>	<b>1</b>
129	Mulching Fixing Seat \ RAL9017 Black	CELM-0060	1
130	Mulching Button Reset Spring \ White Zinc Plated	CELM-0061	1
131	Mulching Button \ RAL2003 Orange	CELM-0062	1
132	Mulching Plug \ RAL9017 Black	CELM-0063	1
133	Rear Grass \ RAL9017 Black	CELM-0064	1
<b>134 - 135</b>	<b>Grass Box Assembly, Natural Color</b>	<b>CELM-0070</b>	<b>1</b>
134	Grass Collection Frame \ Spray Coating \ RAL9017 Black	CELM-0071	1
135	Grass Collection Bag \ Black	CELM-0072	1