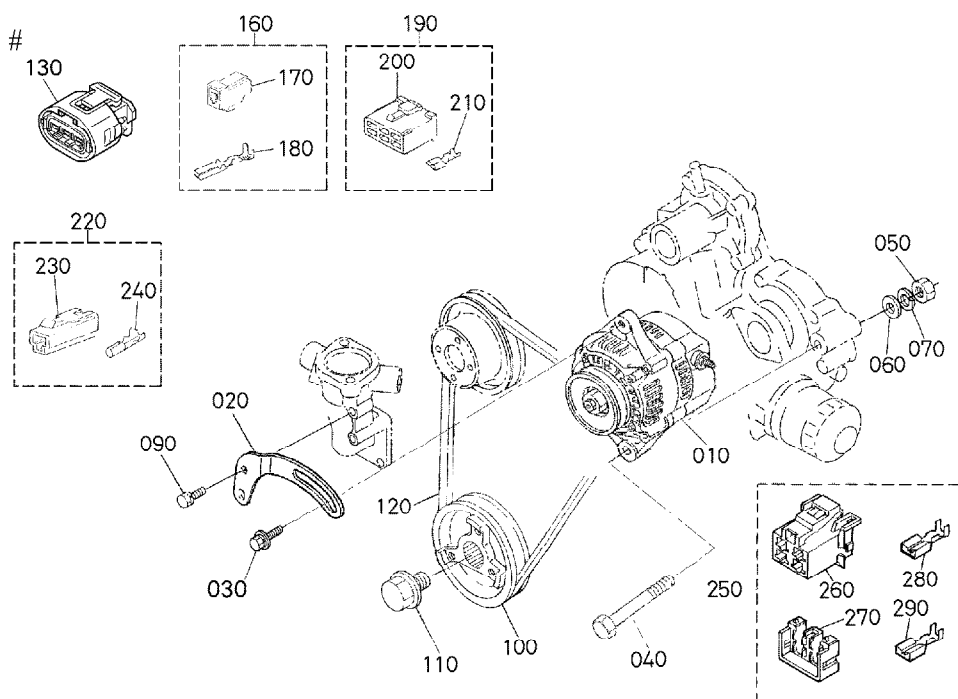


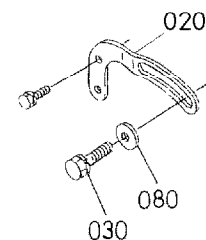
0402

ALTERNATOR AND PULLEY
ALTERNATEUR
WECHSELSTROMMASCHINE



16904-025-13

OLD PART



1G904-809-10

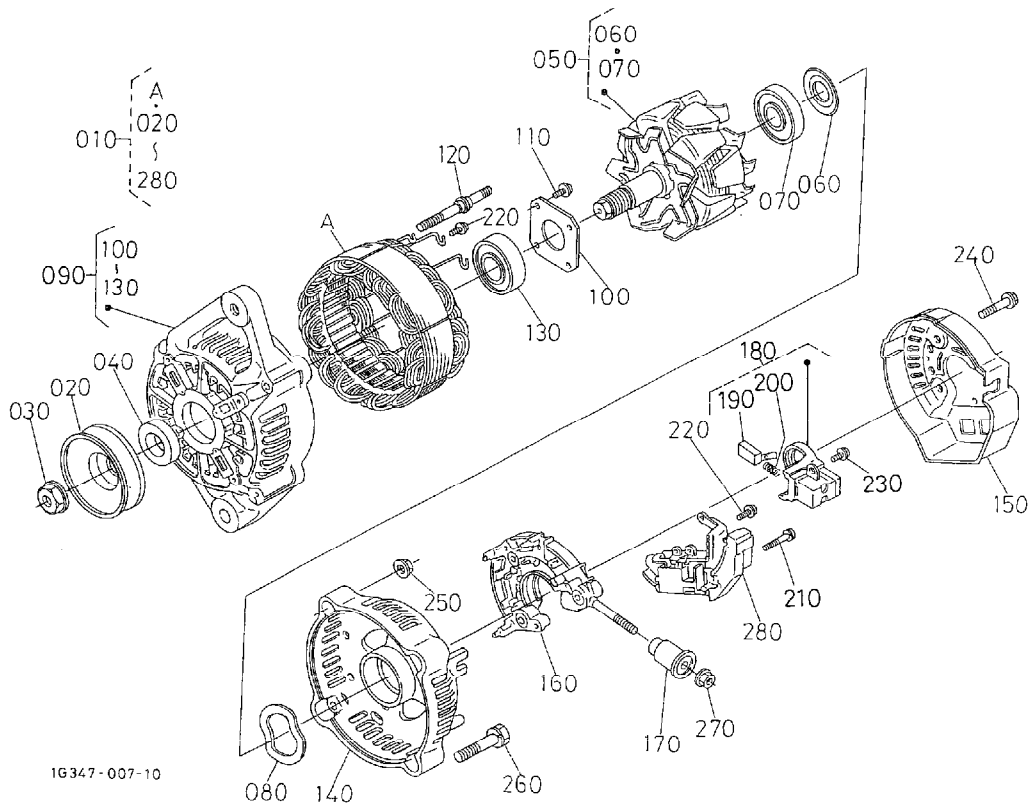
A: V1505-E2B-FERRARI-1

REF. No. POS. No. BILD-Nr.	PART No. REFERENCE BESELL-Nr.	PART NAME	DESIGNATION	BEZEICHNUNG	Q' TY/S. No. Q' TE/No. S. STUECK/S. Nr.		I. C.	REMARKS REMARQUES BEMERKUNGEN
					A	B		
010	16678-6401-2	ASSY ALTERNATOR	ALTERNATEUR COMPLET	GRP. WECHSELSTROMDYN.	1	-		12V 30A
020	16241-6442-0	STAY, DYNAMO	TENDEUR	DYNAMOSTANGE	≤6M9999	-		
020	16241-6442-2	STAY, DYNAMO	TENDEUR	DYNAMOSTANGE	≥6N0001	-	←	
030	01123-50830	BOLT	VIS	BOLZEN	≤4E9526	-		
030	01127-50830	BOLT	VIS	BOLZEN	>=4G0001	-	←	
040	01173-51085	BOLT	VIS	BOLZEN	1	-		
050	02176-50100	NUT	ECROU	MUTTER	1	-		
060	04011-50100	WASHER, PLAIN	RONDELLE FREIN	SCHEIBE	1	-		
070	04512-60100	WASHER, SPRING	RONDELLE GROWER	FEDERRING	1	-		
080	04015-60080	WASHER, PLAIN	RONDELLE FREIN	SCHEIBE	≤4E9526	-		
090	01023-50616	BOLT	VIS	BOLZEN	1	-		
100	16249-7428-0	PULLEY, FAN DRIVE	POULIE ENTRAIN. VENT.	RIEMENSCHIEBE	1	-		
110	16241-9102-0	BOLT, FAN DRIVE	VIS	BOLZEN	1	-		
120	16241-9701-0	V BELT	COURROIE	RIEMEN	1	-		37.0in
130	16678-6583-0	ASSY CONNECTOR	ENS. CONNECTEUR	GRP. ANSCHLUBE	1	-		#
140	----	BLANK	BLANC	LEERE SPALTE	-	-		#
150	----	BLANK	BLANC	LEERE SPALTE	-	-		#
160	1C010-6583-0	ASSY COUPLER	ENS. COUPLEUR	GRP. KUPPLER	1	-		
170	1C010-6588-0	CONNECTOR	CONNECTEUR	ANSCHLUBE	1	-		
180	1C010-6591-0	TERMINAL	BORNE	ANSCHLUBKLEMME	2	-		
190	16662-6583-0	ASSY COUPLER, CONNec.	ENS. COUPLEUR CONNec.	GRP. KUPPLERANSCHLUBE	1	-		
200	19872-6584-0	CONNECTOR	CONNECTEUR	ANSCHLUBE	1	-		
210	19237-6591-0	TERMINAL	DEBORNE	ANSCHLUBKLEMME	5	-		
220	19215-6375-0	TERMINAL	BORNE	ANSCHLUBKLEMME	1	-		
230	11521-6592-0	CONNECTOR	CONNECTEUR	ANSCHLUBE	1	-		
240	11521-6597-0	TERMINAL	BORNE	ANSCHLUBKLEMME	1	-		
250	16613-6583-0	ASSY CONNECTOR	ENSEMBLE CONNECTEUR	MONT. VARBINDUNG	1	-		
260	16613-6588-0	CONNECTOR	CONNECTEUR	ANSCHLUBE	1	-		
270	16613-6574-0	STOPPER	BOUCHON	STOPFEN	1	-		
280	16613-6596-0	TERMINAL	BORNE	ANSCHLUBKLEMME	2	-		

↔ Interchangeable; ≠ not interchangeable; ← new for old; → old for new

0403

ALTERNATOR (COMPONENT PARTS)
ALTERNATEUR (PARTIES COMPOSANTES)
WECHSELSTROMMASCHINE (EINZEL-TEIL)

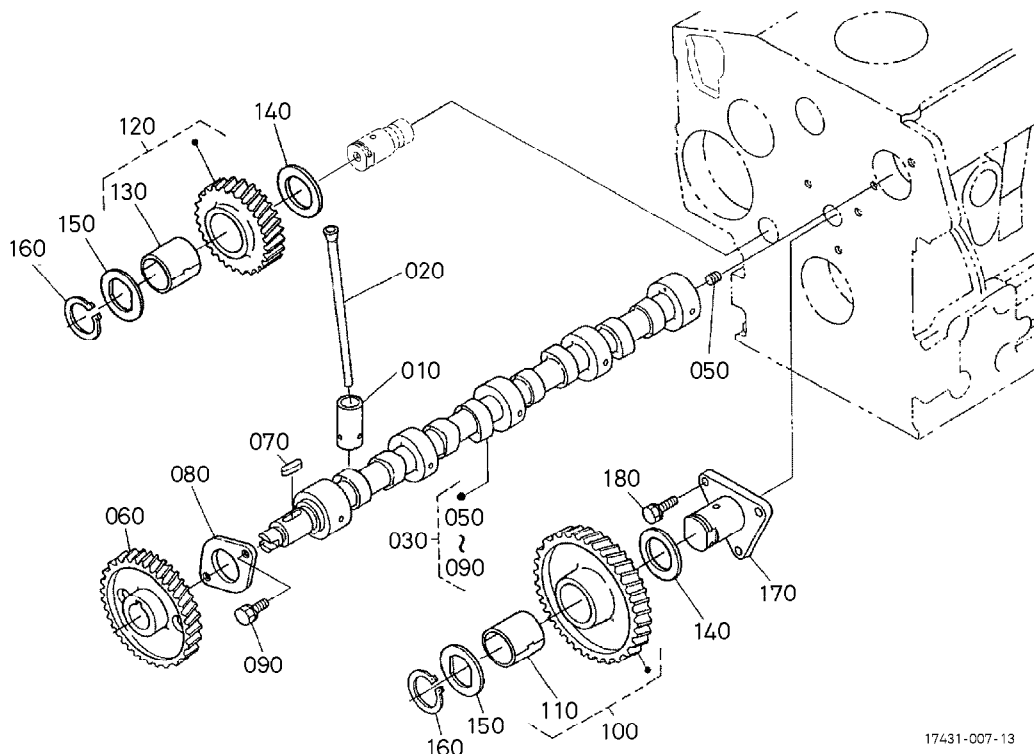


A: V1505-E2B-FERRARI-1

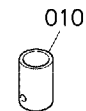
REF. No. POS. No. BILD-Nr.	PART No. REFERENCE BESELL-Nr.	PART NAME	DESIGNATION	BEZEICHNUNG	Q' TY/S. No. G' TE/No. S. STUECK/S. Nr.		I. C.	REMARKS REMARQUES BEMERKUNGEN
					A	B		
010	16678-6401-2	ASSY ALTERNATOR	ALTERNATEUR COMPLET	GRP. WECHSELSTROMDYN.	1	-		
020	15881-6411-0	PULLEY, DYNAMO	POULIE D' ALTERNATEUR	RIEMENSCHLEIBE, DYNAMO	1	-		
030	15881-9201-0	NUT	ECROU	MUTTER	1	-		
040	15881-6415-0	COLLAR	COLLIER	HUELSE	1	-		
050	66436-6404-0	ROTOR	ROTOR	ROTOR	1	-		
060	15881-6480-0	COVER, BEARING	COUVERCLE	DECKEL	1	-		
070	16652-6477-0	BEARING, BALL	ROULEMENT A BILLES	KUGELLAGER	1	-		
080	15881-6481-0	WASHER, THRUST	RONDELLE DE BUTEE	DRUCKSCHEIBE	1	-		
090	66436-6402-0	ASSY FRAME, DRIVE END	ENS. BATI ARRIERE	GRP. ANTRIEBSRAHMEN	1	-		
100	15881-6471-0	PLATE, RETAINER	PLAQUE RETENUE	HALTEPLATTE	1	-		
110	15881-9301-0	SCREW, ROUND HEAD	VIS A TETE RONDE	RUNDKOPFSCHRAUBE	4	-		
120	15881-6426-0	BOLT, THROUGH	VIS, PASSANT	DURCHGEHENDERBOLZEN	2	-		
130	16652-6478-0	BEARING, BALL	ROULEMENT A BILLES	KUGELLAGER	1	-		
140	16678-6406-0	FRAME, END	BATI	RAHMEN	1	-		
150	16678-6423-0	COVER, END	PALIER ARRIERE	DECKEL	1	-		
160	15881-6485-0	ASSY RECTIFIER	REDRESSEUR	MONT. GLEICHRICHTER	1	-		
170	15881-6490-0	BUSH, INSULATION	BAGUE ISOLANTE	BUCHSE	1	-		
180	16652-6431-0	HOLDER, BRUSH	PORTE BALAI	BUERSTEN HALTER	1	-		
190	15881-6409-0	BRUSH	PATTE D' ATTACHE	BUERSTE	2	-		
200	15881-6433-0	SPRING, BRUSH	RESSORT DE BALAI	SCHLEIFBUERSTENFEDER	2	-		
210	15881-9302-0	SCREW, ROUND HEAD	VIS A TETE RONDE	RUNDKOPFSCHRAUBE	2	-		
220	15881-9303-0	SCREW, ROUND HEAD	VIS A TETE RONDE	RUNDKOPFSCHRAUBE	6	-		
230	15881-9304-0	SCREW, ROUND HEAD	VIS A TETE RONDE	RUNDKOPFSCHRAUBE	1	-		
240	15881-9104-0	BOLT	VIS	BOLZEN	3	-		
250	15881-9202-0	NUT	ECROU	MUTTER	2	-		
260	15881-9105-0	BOLT	VIS	BOLZEN	2	-		
270	14182-9203-0	NUT	ECROU	MUTTER	1	-		
280	16652-6460-0	ASSY REGULATOR	REGULATEUR	REGULATOR	1	-		

↔ Interchangeable; ≠ not interchangeable; ← new for old; → old for new

010100 CAMSHAFT AND IDLE GEAR SHAFT ARBRE A CAMES ET ARBRE DE PIGNON DE RALENTI NOCKENWELLE UND FREILAUFGETRIEBEWELLE



OLD



17431-007-13

16611-849-12

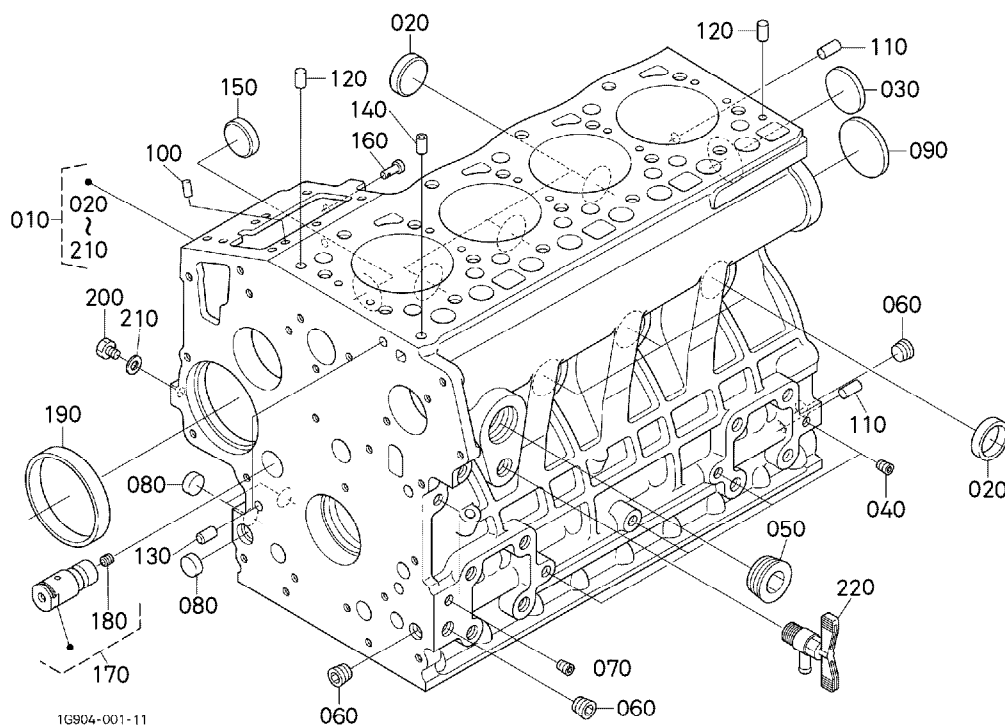
A:V1505-E2B-FERRARI-1

REF.No. POS.No. BILD-Nr.	PART No. REFERENCE BESELL-Nr.	PART NAME	DESIGNATION	BEZEICHNUNG	QTY/S.No. QTE/No.S. STUECK/S.Nr.	I.C. I.C. I.C.	REMARKS REMARQUES BEMERKUNGEN
					A		
010	16261-1555-0	TAPPET	POUSSOIR	STOSSEL	8 ≤6F9999		
010	16673-1555-0	TAPPET	POUSSOIR	STOSSEL	8 >6G0001	←	
020	16241-1511-0	PUSH ROD	TIGE DE POUSSOIR	STOSSELSTANGE	8		
030	16271-1691-0	ASSY CAMSHAFT	ENS.ARBRE A CAMES	GRP.NOCKENWELLE	1		
040	---	BLANK	BLANC	LEERE SPALTE	-		
050	15521-9361-0	SCREW,SET	VIS D'ARRET	ANSCHLAGSCHRAUBE	1		
060	16241-1651-0	GEAR,CAM	PIGNON	ZAHNRAD	1		
070	05712-00518	KEY,FEATHER	CLAVETTE	KEIL	1		
080	16241-1627-0	STOPPER,CAMSHAFT	BOUCHON ARBRE A CAME	NOCKENWELLESERRPLA.	1		
090	01023-50616	BOLT	VIS	BOLZEN	2		
100	16271-2401-0	COMP GEAR,IDLE	PIGNON.COMP	KOMP.LEERLAUFGETRIEB	1 ≤8VZ999		#
100	16271-2401-2	COMP GEAR,IDLE	PIGNON.COMP	KOMP.LEERLAUFGETRIEB	1 >8W0001	←	#
110	16271-2498-0	BUSH,IDLE GEAR	BAGUE DU PIGNON	BUCHSE,LEERLAUFGETR.	1 ≤8VZ999		#
110	16271-2498-2	BUSH,IDLE GEAR	BAGUE DU PIGNON	BUCHSE,LEERLAUFGETR.	1 >8W0001	←	#
120	16271-2402-0	COMP GEAR,IDLE	PIGNON.COMP	KOMP.LEERLAUFGETRIEB	1 ≤8VZ999		#
120	16271-2402-2	COMP GEAR, IDLE	PIGNON. COMP	KOMP.LEERLAUFGETRIEB	1 >8W0001	←	#
130	16271-2498-0	BUSH,IDLE GEAR	BAGUE DU PIGNON	BUCHSE,LEERLAUFGETR.	1 ≤8VZ999		#
130	16271-2498-2	BUSH,IDLE GEAR	BAGUE DU PIGNON	BUCHSE,LEERLAUFGETR.	1 >8W0001	←	#
140	16241-2436-0	COLLAR,IDLE GEAR	COLLIER DE PIGNONF.	HUELSELEERLAUFGETRI.	2		
150	16241-2437-0	COLLAR,IDLE GEAR	COLLIER DE PIGNONF.	HUELSELEERLAUFGETRI.	2		
160	16241-2432-0	CIR CLIP,IDLE GEAR	CIRCLIP	SEEGERING	2		
170	16241-2425-0	SHAFT,IDLE GEAR	ARBRE DE PIGNON FOU	WELLE,FREILAUFGETR.	1		
180	01023-50616	BOLT	VIS	BOLZEN	3		

↔ Interchangeable; ≠ not interchangeable; ← new for old; → old for new

0001

CRANKCASE
BLOC MOTEUR
KURBELGEHAEUSE



1G904-001-11

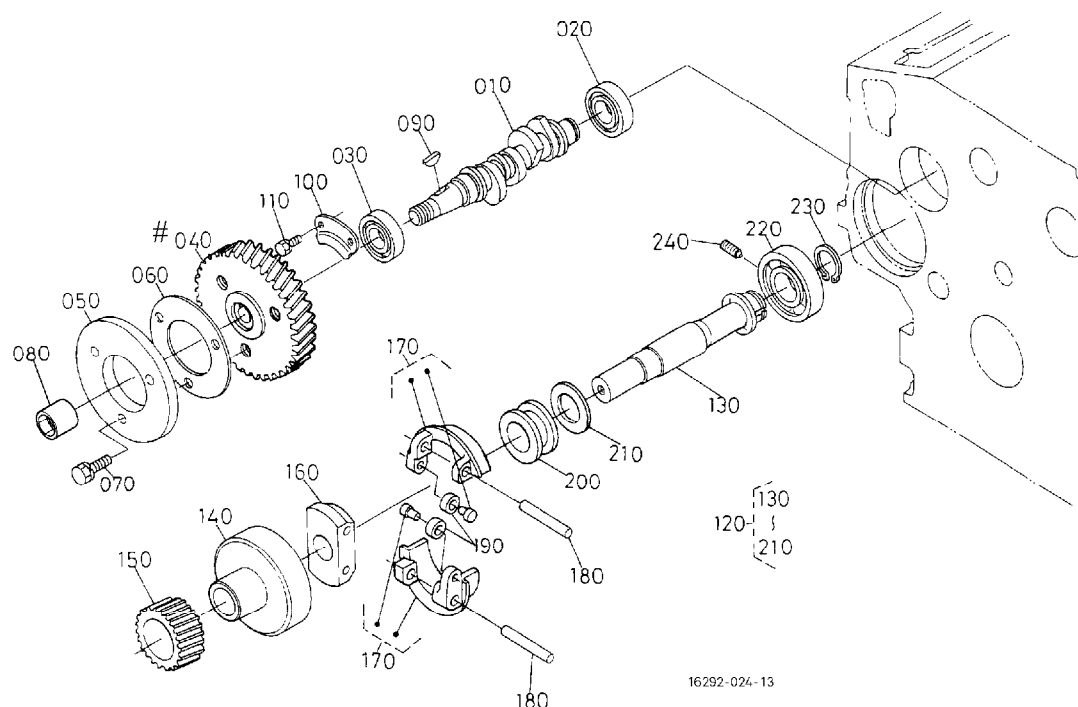
A: V1505-E2B-FERRARI-1

REF. No. POS. No. BILD-Nr.	PART No. REFERENCE BESELL-Nr.	PART NAME	DESIGNATION	BEZEICHNUNG	Q' TY/S. No. Q' TE/No. S. STUECK/S. Nr.		I. C.	REMARKS REMARQUES BEMERKUNGEN
					A	B		
010	1G665-0101-0	COMP. CRANKCASE	BLOC MOTEUR COMPLET	KOMP. KURBELGEHAEUSE	1	-		#ORDER BY * AND FIG. No. 0007-050 (SET)
010	1G665-0101-2	COMP. CRANKCASE	BLOC MOTEUR COMPLET	KOMP. KURBELGEHAEUSE	≤420548	-	≠	#*
010	1G665-0101-3	COMP. CRANKCASE	BLOC MOTEUR COMPLET	KOMP. KURBELGEHAEUSE	≥5A0001	-	←	
020	15451-9627-0	CAP. SEALING	PASTILLE	STOEPSSEL, ABDICHTUNG	6	-		
030	15221-0349-0	CAP. SEALING	PASTILLE	STOEPSSEL, ABDICHTUNG	1	-		
040	15261-9601-0	PLUG	BOUCHON	STOPFEN	4	-		
050	16683-9602-0	PLUG	BOUCHON	STOPFEN	1	-		
060	16241-9601-0	PLUG	BOUCHON	STOPFEN	3	-		
070	15521-9602-0	PLUG	BOUCHON	STOPFEN	2	-		
080	17391-9616-0	PLUG. EXPANSION	BOUCHON EXPANSIBLE	STOEPSSEL, AUSDEHNUNG	3	-		
090	16271-9616-0	PLUG, EXPANSION	BOUCHON EXPANSIBLE	STOEPSSEL, AUSDEHNUNG	1	-		
100	05012-00508	PIN, STRAIGHT	GOUPILLE CYLINDRIQUE	ZYLINDERSTIFT	2	-		
110	05012-00814	PIN, STRAIGHT	GOUPILLE CYLINDRIQUE	ZYLINDERSTIFT	2	-		
120	16221-9452-0	PIN, STRAIGHT	GOUPILLE CYLINDRIQUE	ZYLINDERSTIFT	2	-		
130	15231-3396-0	PIN, PIPE	GICLEUR	ROHRSTIFT	2	-		
140	16241-3365-0	PIN, PIPE	GICLEUR	ROHRSTIFT	1	-		
150	16241-9626-2	PLUG	BOUCHON	STOPFEN	1	-		
160	16221-5628-0	PIN, START SPRING	GOUPILLE DU RESSORT	STARTFEDERSTIFT	1	-		
170	16241-2406-0	COMP SHAFT, IDLE	COMP. ARBRE D' INTERM.	KOMP. FREILAUFWELLE	1	-		
180	15521-9361-0	SCREW, SET	VIS D' ARRET	ANSCHLAGSCHRAUBE	1	-		
190	16271-5535-0	BUSH, GOVERNOR GEAR	BAGUE DE REG. PIGNON	BUCHSE	1	-		
200	15221-3361-0	PLUG	BOUCHON	STOPFEN	1	-		
210	15021-3366-0	GASKET	JOINT	DICHTUNGSPLATTE	1	-		
220	15841-7302-0	ASSY COCK, DRAIN	ENS. ROBINET VIDANGE	GRP. ABLASSHAHN	1	-		

↔ Interchangeable; ≠ not interchangeable; ← new for old; → old for new

0105

FUEL CAMSHAFT AND GOVERNOR SHAFT
 ARBRE A CAMES DE CARBURANT ET ARBRE REGULATEUR
 KRAFTSTOFF-NOCKENWELLE UND ACHSE

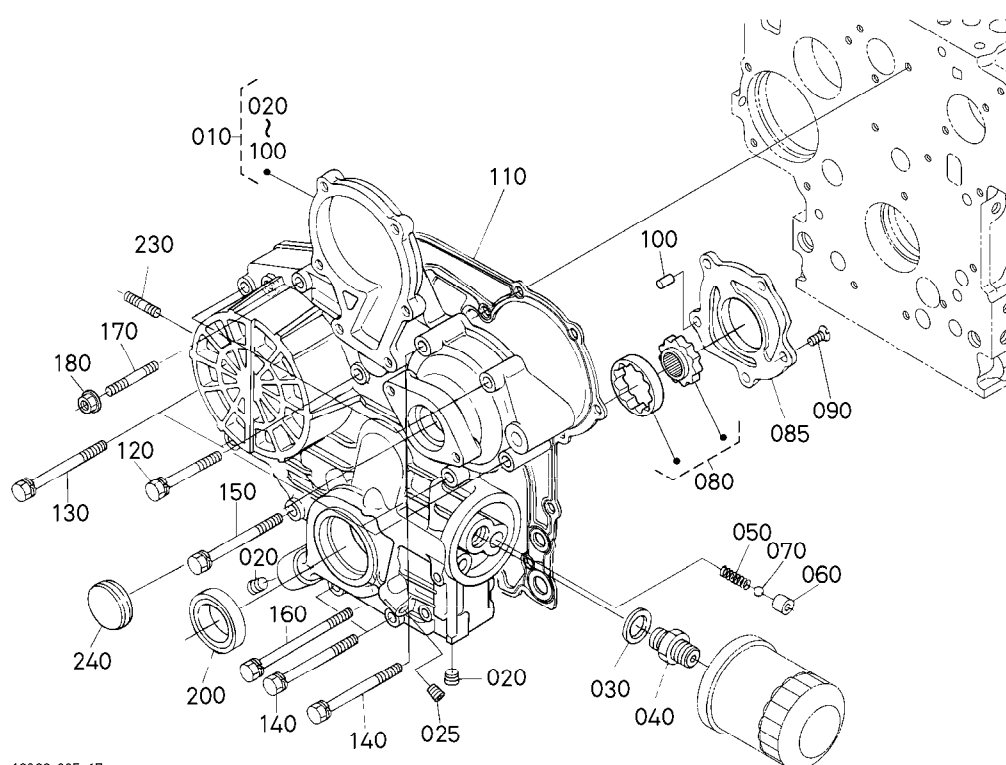


A: V1505-E2B-FERRARI-1

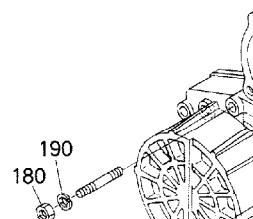
REF. No. POS. No. BILD-Nr.	PART No. REFERENCE BESELL-Nr.	PART NAME	DESIGNATION	BEZEICHNUNG	Q' TY/S. No. g' TE/No. S. STUECK/S. Nr.		I. C.	REMARKS REMARQUES BEMERKUNGEN
					A	B		
010	16040-1617-0	CAMSHAFT, FUEL	ARBRE A CAMES	NOCKENWELLE	1	-		
020	16261-9730-0	BEARING, BALL	ROULEMENT A BILLES	KUGELLAGER	1	-		
030	16261-9731-0	BEARING, BALL	ROULEMENT A BILLES	KUGELLAGER	1	-		
040	16272-5115-0	GEAR, INJECTION PUMP	ENGRE. POMPE D' INJEC.	GETRIEBEZAHNRAD	1	-		
050	16241-5111-3	CAM, FUEL	CAME DE CARBURANT	NOCKEN	1	-		
060	16241-5119-0	WASHER	RONDELLE	SCHEIBE	1	-		
070	01023-50618	BOLT	VIS	BOLZEN	3	-		
080	16241-9233-0	NUT	ECROU	MUTTER	1	-		
090	16241-9523-0	KEY, WOODRUFF	CLAVETTE WOODRUFF	SCHEIBEN-KEIL	1	-		
100	16241-1632-0	STOPPER, FUEL. C/SHAFT	BOUCHON	STOPFENNOCKENWELLE	1	-		
110	01023-50616	BOLT	VIS	BOLZEN	2	-		
120	16271-5501-3	ASSY SHAFT, GOVERNOR	ENS. ARBRE REGULATE.	GRP. ACHSE	1	-		
130	16271-5531-3	SHAFT, GOVERNOR	ARBRE DE REGULATEUR	REGLERWELLE	1	-		
140	16241-5539-2	HOLDER, GOVERNOR GEAR	SUPPORT REGUL-PIGNON	HALTER	1	-		
150	16271-5532-0	GEAR, GOVERNOR	ENGRENAGE DE REGULAT	REGELERZAHNRAD	1	-		
160	16241-5527-0	HOLDER, GOV. WEIGHT	SUPPORT POIDS REGUL.	HALTER, GEWICHT	1	-		
170	16271-5506-0	COMP. WEIGHT, GOVERNOR	POIDS COMP. REGUL.	GEWICHT KOMP.	2	-		
180	16241-5526-0	SHAFT, GOV. WEIGHT	ARBRE DE POIDS REG.	WELLE	2	-		
190	19484-5544-0	ROLLER	ROULEAU	ROLLE	2	-		
200	16241-5545-0	SLEEVE, GOVERNOR	BAGUE DE REGULATEUR	REGLERMUFFE	1	-		
210	16241-5546-3	WASHER, THRUST	RONDELLE DE BUTEE	DRUCKSCHEIBE	1	-		
220	16261-9732-0	BEARING, BALL	ROULEMENT A BILLES	KUGELLAGER	1	-		
230	16271-5541-0	CIR CLIP, GOV. SHAFT	CIRCLIP DE REG. ARBRE	SPRENGRING	1	-		
240	16241-5555-4	SCREW, SET	VIS D'ARRET	ANSCHLAGSCHRAUBE	1	-		

↔ Interchangeable; ≠ not interchangeable; ← new for old; → old for new

0004

**GEAR CASE
CARTER DE DISTRIBUTION
GETRIEBEGEHAEUSE**


OLD PART



16366-005-17

16366-810-10

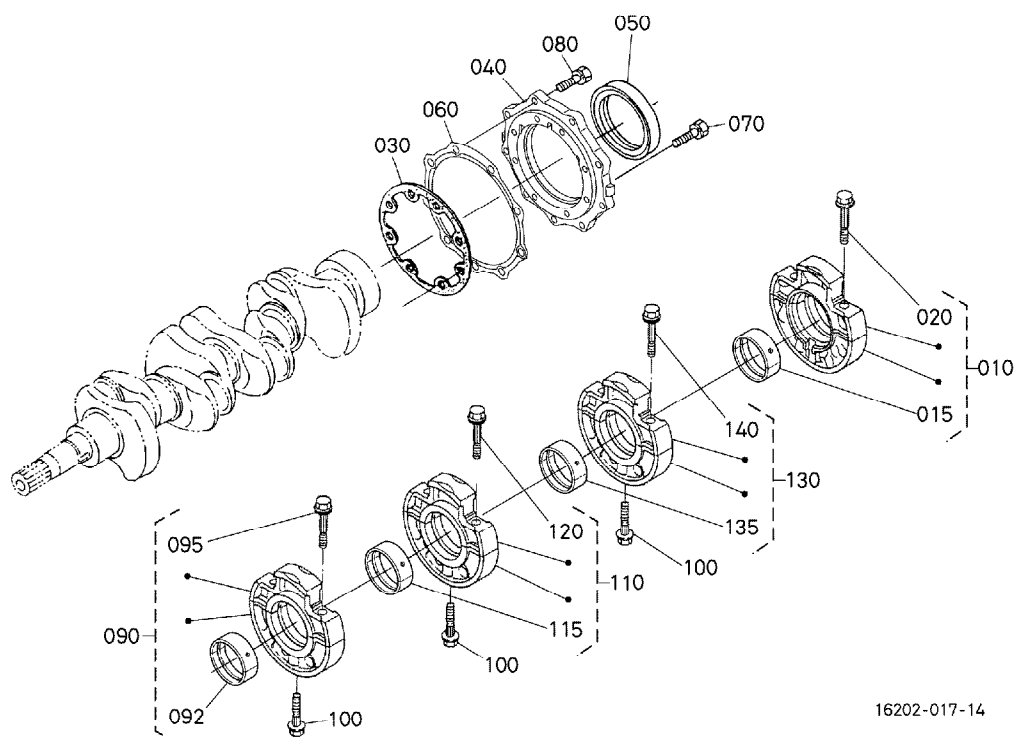
A: V1505-E2B-FERRARI-1

REF. No. POS. No. BILD-Nr.	PART No. REFERENCE BESELL-Nr.	PART NAME	DESIGNATION	BEZEICHNUNG	QTY/S. No. G' TE/No. S. STUECK/S. Nr.		I. C.	REMARKS REMARQUES BEMERKUNGEN
					A	B		
010	16251-0402-7	COMP. CASE, GEAR	CARTER DISTR. COMP.	KMP. GETRIEBEGEHAEUSE	≤509999	-		
010	16252-0402-0	COMP. CASE, GEAR	CARTER DISTR. COMP.	KMP. GETRIEBEGEHAEUSE	≥5E0001	-	↔	
010	16252-0402-2	COMP. CASE, GEAR	CARTER DISTR. COMP.	KMP. GETRIEBEGEHAEUSE	≥560001	-	←	
020	16241-9602-0	PLUG	BOUCHON	STOPFEN	2	-		
025	15521-9602-0	PLUG	BOUCHON	STOPFEN	1	-		
030	04011-50180	WASHER, PLAIN	RONDELLE FREIN	SCHEIBE	1	-		
040	15241-3229-0	JOINT, PIPE	RACCORD DE TUYAU	VERBINDUNGSSTUECK	1	-		
050	16241-3695-0	SPRING	RESSORT	FRUEHLING	1	-		
060	16241-3693-0	SEAT, VALVE	SIEGE DE SOUPE	SITZ, VENTIL	1	-		
070	07715-00201	BALL	BILLE	KUGEL	1	-		
080	16241-3507-0	ASSY ROTOR, OIL PUMP	ROTOR DE POMPE HUILE	OLFORDERPUMPE LAUFER	1	-		
085	16251-3513-0	COVER, OIL PUMP	COUV. POMPE A HUILE	OELPUMPEDECKEL	1	-		
090	03017-50620	SCREW, CR-REC-BD-HD	VIS	SCHRAUBE	5	-		
100	05012-00410	PIN, STRAIGHT	GOUPILLE CYLINDRIQUE	ZYLINDERSTIFT	2	-		
110	16264-0413-2	GASKET, GEAR CASE	JOINT	DICHTUNGGETRIEBEGEH.	1	-		#
120	01023-50645	BOLT	VIS	BOLZEN	3	-		
130	01023-60650	BOLT	VIS	BOLZEN	4	-		
140	01023-50655	BOLT	VIS	BOLZEN	4	-		
150	01023-50665	BOLT	VIS	BOLZEN	1	-		
160	16241-9104-0	BOLT	VIS	BOLZEN	1	-		
170	16245-9153-0	STUD	GOUJON	STEBOLZEN	1	-		
180	02056-50060	NUT	ECROU	MUTTER	≤7VZ999	-		#
180	02751-50060	NUT, FLANGE	ECROU A EMBASE	FLANSCHEN-MUTTER	≥7W0001	-	←	#
190	04512-60060	WASHER, SPRING	RONDELLE GROWER	FEDERRING	≤7VZ999	-		#
200	16241-0421-2	SEAL, OIL	BAGUE JOINT	OELDICHTUNGSRING	1	-		
210	----	BLANK	BLANC	LEERE SPALTE	-	-		
220	----	BLANK	BLANC	LEERE SPALTE	-	-		
230	16245-9154-0	STUD	GOUJON	STEBOLZEN	2	-		
240	16264-8334-2	COVER, GEAR CASE	COUV. CARTER DISTRIB	DECKEL, GETRIEBEGEHAEUS	1	-		

↔ Interchangeable; ≠ not interchangeable; ← new for old; → old for new

0100

MAIN BEARING CASE
PALIERS DE VILEBREQUIN
HAUPTLAGERGEHAEUSE



16202-017-14

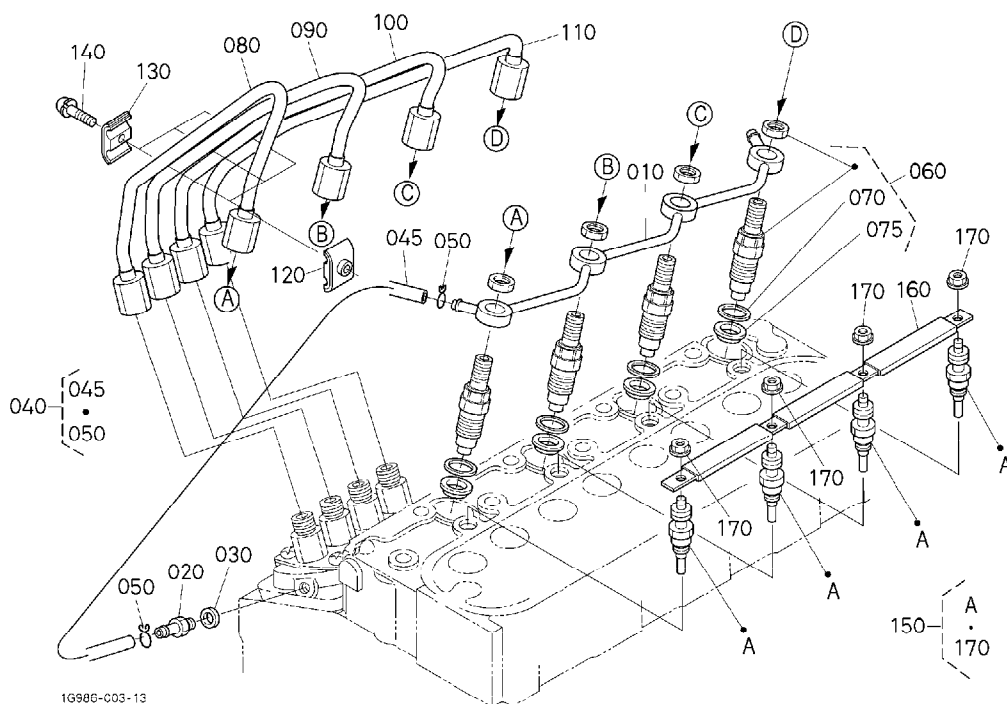
A: V1505-E2B-FERRARI-1

REF. No. POS. No. BILD-Nr.	PART No. REFERENCE BESELL-Nr.	PART NAME	DESIGNATION	BEZEICHNUNG	QTY/S. No. G TE/No. S. STUECK/S. Nr.		I. C.	REMARKS REMARQUES BEMERKUNGEN
					A	B		
010	16292-0709-0	ASSY BRG. CASE, WHEEL	ENS. PALIER VILEBREQ.	GRP. LAGERGEHAEUSE	≤5X9999	-	#	
010	16292-0709-3	ASSY BRG. CASE, WHEEL	ENS. PALIER VILEBREQ.	GRP. LAGERGEHAEUSE	≥5Y0001	-	←	#
010	16292-0709-5	ASSY BRG. CASE, WHEEL	ENS. PALIER VILEBREQ.	GRP. LAGERGEHAEUSE	≥6L0001	-	←	
015	16292-2349-0	METAL. CRANKSHAFT	COUSSINET DE VILEBR.	METALLTEIL	≤5X9999	-		STD SET
015	16292-2349-3	METAL. CRANKSHAFT	COUSSINET DE VILEBR.	METALLTEIL, KURBELWE.	≥5Y0001	-	←	STD SET
015	16292-2349-4	METAL. CRANKSHAFT	COUSSINET DE VILEBR.	METALLTEIL, KURBELWE.	≥6L0001	-	←	STD SET
015	16292-2386-0	METAL. CRANKSHAFT	COUSSINET DE VILEBR.	METALLTEIL	≤5X9999	-		-0. 20mm
015	16292-2386-3	METAL. CRANKSHAFT	COUSSINET DE VILEBR.	METALLTEIL	≥5Y0001	-	←	-0. 20mm
015	16292-2386-4	METAL. CRANKSHAFT	COUSSINET DE VILEBR.	METALLTEIL	≥6L0001	-	←	-0. 20mm SET
015	16292-2387-0	METAL. CRANKSHAFT	COUSSINET DE VILEBR.	METALLTEIL	≤5X9999	-		-0. 40mm SET
015	16292-2387-3	METAL. CRANKSHAFT	COUSSINET DE VILEBR.	METALLTEIL	≥5Y0001	-	←	-0. 40mm SET
015	16292-2387-4	METAL. CRANKSHAFT	COUSSINET DE VILEBR.	METALLTEIL	≥6L0001	-	←	-0. 40mm SET
020	16241-0454-0	BOLT, BEARING CASE	VIS	BOLZEN, LAGERKASTEN	2	-		
030	16264-0436-0	GASKET, BRG. CASE	JOINT	DICHTUNG, LAGER	1	-		
040	16241-0481-3	COVER, BEARING CASE	PORTE JOINT	DECKEL, LAGERKASTEN	≤6K9999	-		
040	16241-0481-5	COVER, BEARING CASE	PORTE JOINT	DECKEL, LAGERKASTEN	≥6L0001	-	≠	
050	16241-0446-0	SEAL, OIL	BAGUE JOINT	OELDICHTUNGSRING	≤5Y9999	-		
050	16285-0446-0	SEAL, OIL	BAGUE JOINT	DELDICHTUNGSRING	≥5W0001	-	←	
060	16264-0482-0	GASKET	JOINT	DICHTUNGSPLATTE	≤6K9999	-		
060	16264-0482-2	GASKET, CASE COVER	JOINT DE CARTER FOU	DICHTUNG GEHAEUSEDEC	≥6L0001	-	≠	
070	01023-50625	BOLT	VIS	BOLZEN	8	-		
080	01023-50620	BOLT	VIS	BOLZEN	9	-		
090	16261-0704-0	ASSY BRG. CASE, MAIN	ENS. PALIER VILEBREQ.	GRP. LAGERGEHAEUSE	≤6K9999	-		
090	16261-0704-5	ASSY BRG. CASE, MAIN	ENS. PALIER VILEBREQ.	GRP. LAGERGEHAEUSE	≥6L0001	-	←	
092	16241-2348-0	METAL. CRANKSHAFT	COUSSINET DE VILEBR.	METALLTEIL, KURBELWE	1	-		STD SET
092	16241-2393-0	METAL. CRANKSHAFT	COUSSINET DE VILEBR.	METALLTEIL, KURBELWE	1	-		-0. 20mm SET
092	16241-2394-0	METAL. CRANKSHAFT	COUSSINET DE VILEBR.	METALLTEIL, KURBELWE	1	-		-0. 40mm SET
095	16241-0454-0	BOLT, BEARING CASE	VIS	BOLZEN, LAGERKASTEN	2	-		
100	16241-0456-0	BOLT, BEARING CASE	VIS	BOLZEN, LAGERKASTEN	3	-		

↔ Interchangeable; ≠ not interchangeable; ← new for old; → old for new

0206

NOZZLE HOLDER AND GLOW PLUG PORTE-INJECTEUR ET BOUGIE DE PRECHAUFFAGE DUESENHALTER UND GLEUHKERZE



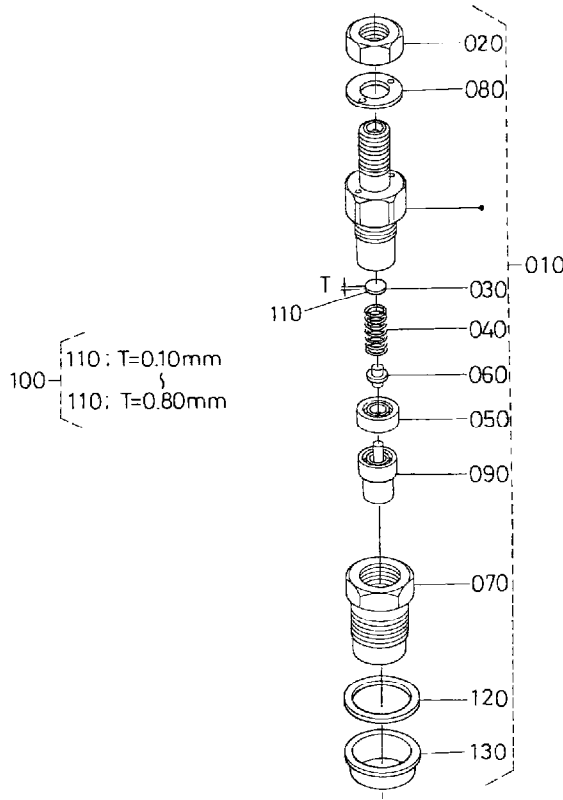
A: V1505-E2B-FERRARI-1

REF. No. POS. No. BILD-Nr.	PART No. REFERENCE BESELL-Nr.	PART NAME	DESIGNATION	BEZEICHNUNG	Q'TY/S. No. G'TE/No. S. STUECK/S. Nr.		I. C.	REMARKS REMARQUES BEMERKUNGEN
					A	B		
010	16271-4250-2	ASSY PIPE, OVER FLOW	ENS. TUYAU TROP-PLEIN	GRP. UEBERLAUFROHR	1	-		
020	15841-5136-0	SCREW, AIR BLEEDER	VIS DE AIR-AVICL TEUR	SCHRAUBE	1	-		
030	15601-9665-0	GASKET	JOINT	DICHTUNGSPLATTE	1	-		
040	15841-4250-0	ASSY PIPE, OVER FLOW	ENS. TUYAU TROP-PLEIN	GRP. UEBERLAUFROHR	1	-		
045	15841-4252-0	PIPE, FUEL OVER FLOW	TUYAU DE TROP-PLEIN	KRAFSTOFFU-LAUFROHR	1	-		
050	14971-4275-0	CLIP, PIPE	ATTACHE	ROHRKLEMME	2	-		
060	1G065-5390-0	KIT HOLDER, NOZZLE	ENS. PORTE-INJECTEUR	GRP. DUESENHALTER	4	-		
070	15841-5362-2	GASKET	JOINT	DICHTUNGSPLATTE	4	-		
075	19077-5365-0	SEAL, HEAT	JOINT DE CHALEUR	DICHTUNG	4	-		
080	16271-5371-2	PIPE, INJECTION	TUYAU D' INJECTEUR	EINSPRITZROHR	1	-		
090	16271-5372-2	PIPE, INJECTION	TUYAU D' INJECTEUR	EINSPRITZROHR	1	-		
100	16271-5373-2	PIPE, INJECTION	TUYAU D' INJECTEUR	EINSPRITZROHR	1	-		
110	16271-5374-2	PIPE, INJECTION	TUYAU D' INJECTEUR	EINSPRITZROHR	1	-		
120	15841-5385-0	CLAMP, PIPE	COLLIER DE TUYAU	ROHRKLEMME	3	-		
130	15841-5386-0	CLAMP, PIPE	COLLIER DE TUYAU	ROHRKLEMME	3	-		
140	03024-50520	SCREW, WITH WASHER	VIS	SCHRAUBE	3	-		
150	16851-6551-2	GLOW PLUG	BOUGIE, PRE-CHAUFFAGE	GLUEHSTOEPSSEL	4	-		#
150	16281-6551-0	GLOW PLUG	BOUGIE, PRE-CHAUFFAGE	GLUEHSTOEPSSEL	4	-	↔	#
160	16271-6556-0	CORD, GLOW PLUG	FILDEBOUG. PRECHAUFF.	GLUEHKERZEKORD	1	-		
170	02761-50040	NUT, FLANGE	ECROU A EMBASE	FLANSCHEN-MUTTER	4	-		

↔ Interchangeable; ≠ not interchangeable; ← new for old; → old for new

0207

NOZZLE HOLDER (COMPONENT PARTS)
 PORTE-INJECTEUR (PARTIES COMPOSANTES)
 DUESENHALTER (EINZEL-TEIL)



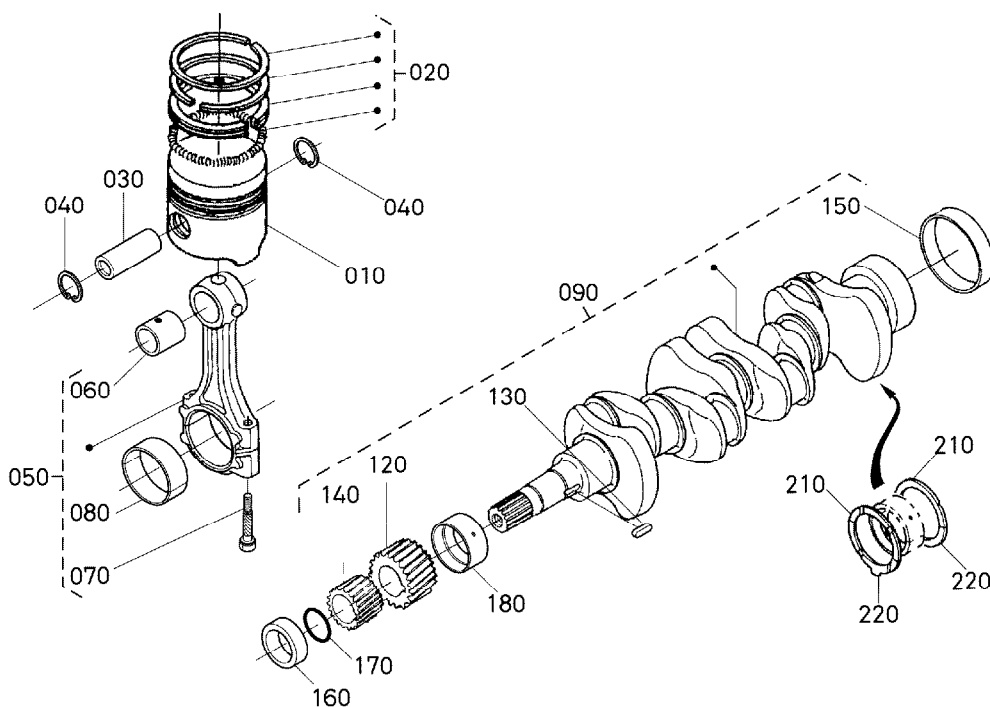
1G347-015-10

A: V1505-E2B-FERRARI-1

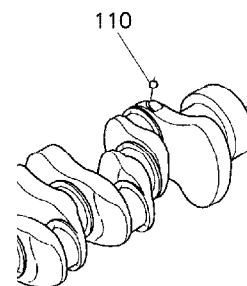
REF. No. POS. No. BILD-Nr.	PART No. REFERENCE BESELL-Nr.	PART NAME	DESIGNATION	BEZEICHNUNG	QTY/S. No. G' TE/No. S. STUECK/S. Nr.		I. C.	REMARKS REMARQUES BEMERKUNGEN
					A	B		
010	1G065-5390-0	KIT HOLDER, NOZZLE	ENS. PORTE-INJECTEUR	GRP. DUESENHALTER	4	-		
020	16032-9203-0	NUT	ECROU	MUTTER	4	-		
030	16032-5323-0	WASHER, ADJUSTING	RONDELLE DE REGLAGE	EINSTELLSCHEIBE	4	-		
040	16032-5317-0	SPRING, NOZZLE	RESSORT D' INJECTEUR	FEDER	4	-		
050	16032-5335-0	SPACER, DISTANCE	ENTRETOISE	DISTANZSCHEIBE	4	-		
060	16032-5316-0	PUSH ROD	TIGE DE POUSSOIR	STOSSELSTANGE	4	-		
070	16032-5328-0	NUT, NOZZLE	ECROU D' INJECTEUR	MUTTER	4	-		
080	16032-9404-0	WASHER, PLAIN	RONDELLE FREIN	SCHEIBE	4	-		
090	1G065-5361-0	PIECE, NOZZLE	ELEMENT D' INJECTEUR	DUESENSTUECK	4	-		
100	16032-9810-0	ASSY WASHER, ADJUST	ENS. RONDELLE	GRP. EINSTELLSCHEIBE	4	-		OPTION
110	16032-9850-0	WASHER, ADJUSTING	RONDELLE DE REGLAGE	EINSTELLSCHEIBE	4	-		0. 10mm
110	16032-9851-0	WASHER, ADJUSTING	RONDELLE DE REGLAGE	EINSTELLSCHEIBE	4	-		0. 20mm
110	16032-9852-0	WASHER, ADJUSTING	RONDELLE DE REGLAGE	EINSTELLSCHEIBE	4	-		0. 30mm
110	16032-9853-0	WASHER, ADJUSTING	RONDELLE DE REGLAGE	EINSTELLSCHEIBE	4	-		0. 40mm
110	16032-9854-0	WASHER, ADJUSTING	RONDELLE DE REGLAGE	EINSTELLSCHEIBE	4	-		0. 50mm
110	16032-9855-0	WASHER, ADJUSTING	RONDELLE DE REGLAGE	EINSTELLSCHEIBE	4	-		0. 52mm
110	16032-9856-0	WASHER, ADJUSTING	RONDELLE DE REGLAGE	EINSTELLSCHEIBE	4	-		0. 54mm
110	16032-9857-0	WASHER, ADJUSTING	RONDELLE DE REGLAGE	EINSTELLSCHEIBE	4	-		0. 56mm
110	16032-9858-0	WASHER, ADJUSTING	RONDELLE DE REGLAGE	EINSTELLSCHEIBE	4	-		0. 58mm
110	16032-9859-0	WASHER, ADJUSTING	RONDELLE DE REGLAGE	EINSTELLSCHEIBE	4	-		0. 80mm
120	15841-5362-2	GASKET	JOINT	DICHTUNGSPLATTE	4	-		
130	19077-5365-0	SEAL, HEAT	JOINT DE CHALEUR	DICHTUNG	4	-		

↔ Interchangeable; ≠ not interchangeable; ← new for old; → old for new

010200 PISTON AND CRANKSHAFT
PISTON ET VILEBREQUIN
KOLBEN UND KURBELWELLE



OLD



17208-011-25

17208-812-11

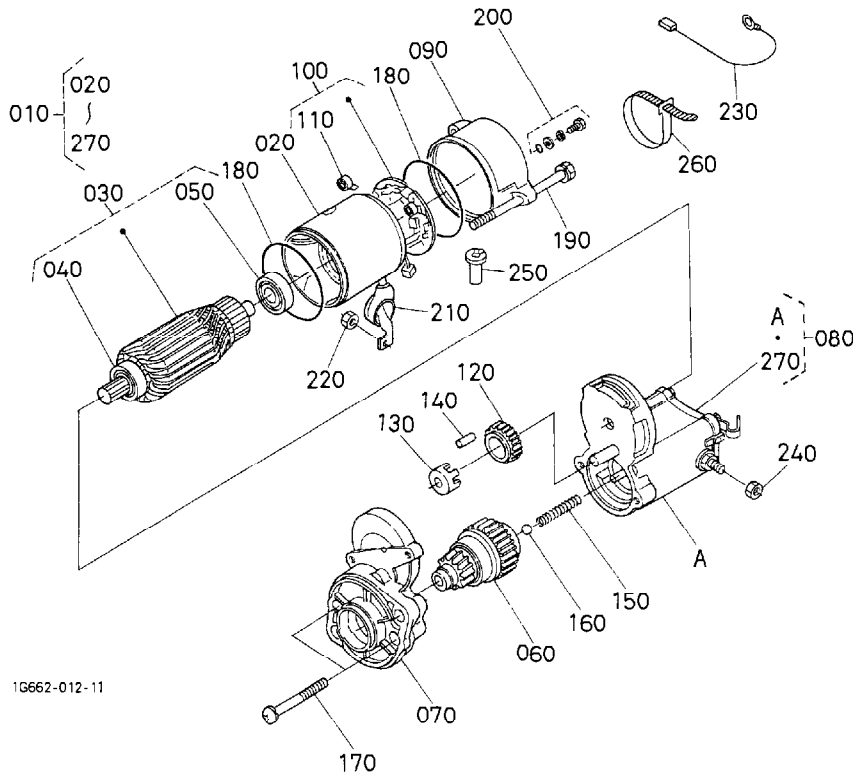
A:V1505-E2B-FERRARI-1

REF.No. POS.No. BILD-Nr.	PART No. REFERENCE BESELL-Nr.	PART NAME	DESIGNATION	BEZEICHNUNG	QTY/S.No. QTE/No.S. STUECK/S.Nr.	I.C.	REMARKS REMARQUES BEMERKUNGEN
					A	I.C.	
010	16060-2111-0	PISTON	PISTON	KOLBEN	4 ≤5F9999		STD ORDER BY 010,020 NEW PARTS(SET)
010	16060-2111-3	PISTON	PISTON	KOLBEN	4 ≥5G0001	≠	STD
010	16060-2111-4	PISTON	PISTON	KOLBEN	4 ≥5W0001	←	STD
010	16060-2191-0	PISTON	PISTON	KOLBEN	4 ≤5F9999		+0.50mm ORDER BY 010,020 NEW PARTS(SET)
010	16060-2191-3	PISTON	PISTON	KOLBEN	4 ≥5G0001	≠	+0.50mm
010	16060-2191-4	PISTON	PISTON	KOLBEN	4 ≥5W0001	←	+0.50mm
020	16261-2105-0	ASSY PISTON RING	ENS.SEGMENT	GRP.KOLBENRING	4 ≤5F9999		STD
020	16292-2105-0	ASSY PISTON RING	ENS.SEGMENT	GRP.KOLBENRING	4 ≥5G0001	≠	STD
020	16261-2109-0	ASSY PISTON RING	ENS.SEGMENT	GRP.KOLBENRING	4 ≤5F9999		+0.50mm
020	16292-2109-0	ASSY PISTON RING	ENS.SEGMENT	GRP.KOLBENRING	4 ≥5G0001	≠	+0.50mm
030	16241-2131-0	PIN,PISTON	AXE DE PISTON	KOLBENBOLZEN	4		
040	16241-2133-0	CIR CLIP,PISTON PIN	CIRCLIP	SEEGERING	8		
050	16241-2201-2	ASSY ROD,CONNECTING	ENS.BIELLE	TRIEBSTANGE KOMP	4 ≤6V9999		
050	1G700-2201-0	ASSY ROD,CONNECTING	ENS.BIELLE	TRIEBSTANGE KOMP	4 ≥6W0001	↔	
060	16241-2198-2	BUSH,PISTON PIN	BAGUE DE BIELLE	BUCHSE,KOLBENSTIFT	4 ≤7HZ999		
060	1G700-2198-0	BUSH,PISTON PIN	BAGUE DE BIELLE	BUCHSE,KOLBENSTIFT	4 ≥7J0001	←	
070	16241-2214-2	BOLT,CONNECTING ROD	VIS DE BIELLE	BOLZEN	8		
080	16241-2231-0	METAL,CRANKPIN	COUSSINET DE BIELLE	METALLTEIL	4		STD SET
080	16241-2297-0	METAL,CRANKPIN	COUSSINET DE BIELLE	METALLTEIL	4		-0.20mm SET
080	16241-2298-0	METAL,CRANKPIN	COUSSINET DE BIELLE	METALLTEIL	4		-0.40mm SET
090	16282-2301-3	COMP.CRANKSHAFT	VILEBREQUIN COMPLET	KOMP.KURBELWELLE	1		
100		BLANK	BLANC	LEERE SPALTE	-		
110	07715-00401	BALL	BILLE	KUGEL	4 ≤6V9999		
120	16241-2411-0	GEAR,CRANK	PIGNON	ZAHNRAD	1 ≤8RZ999		#
120	1A055-2411-0	GEAR,CRANKSHAFT	PIGNON DE VILEBREQ.	KURBELANTRIEBSTEIL	1 ≥8S0001	↔	#
130	16271-9523-0	KEY	CLAVETTE	KEIL	1		
140	16241-3563-0	GEAR,OIL PUMP DRIVE	PIGNON ENTRAIN.POMPE	GETRIEBE	1		
150	16241-2328-0	SLEEVE,CRANKSHAFT	FRETTE ARRIERE	MUFFE	1		
160	16241-2325-0	COLLAR,CRANKSHAFT	COLLIER VILEBREQUIN	HALSRING	1		
170	04814-10280	O RING	BAGUE	RING	1		

↔ Interchangeable; ≠ not interchangeable; ← new for old; → old for new

0405

STARTER (COMPONENT PARTS)
 DEMARREUR (PARTIES COMPOSANTES)
 ANLASSER (EINZEL-TEIL)



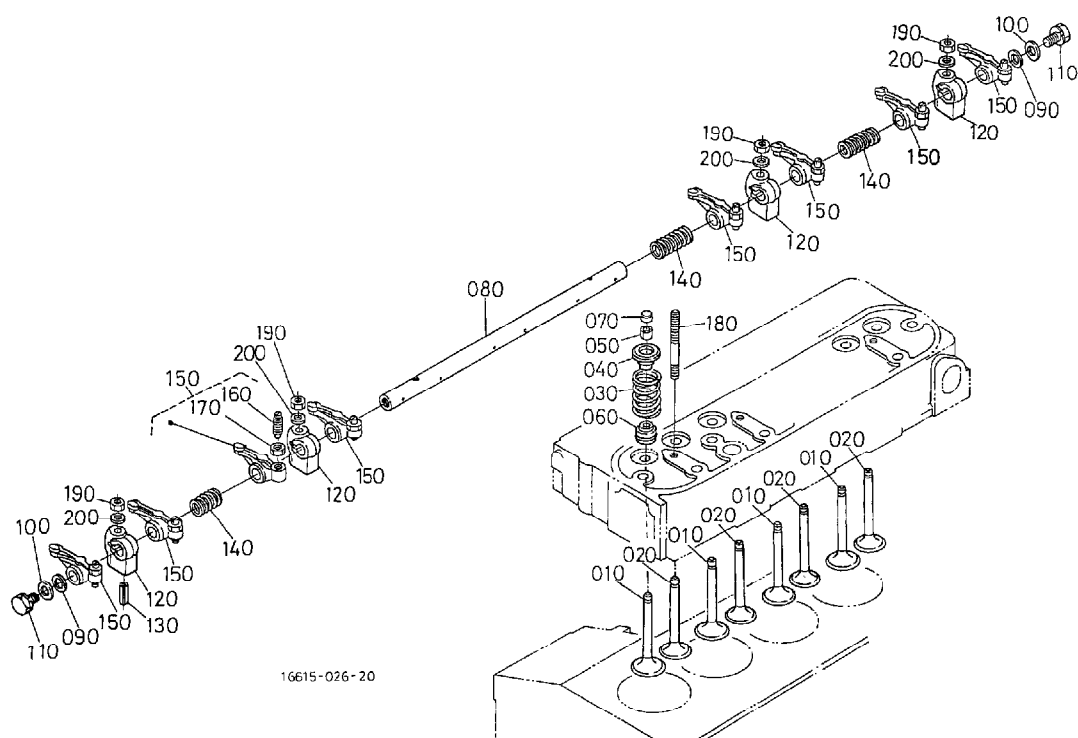
1G662-012-11

A: V1505-E2B-FERRARI-1

REF. No. POS. No. BILD-Nr.	PART No. REFERENCE BESELL-Nr.	PART NAME	DESIGNATION	BEZEICHNUNG	Q' TY/S. No. G' TE/No. S. STUECK/S. Nr.		I. C.	REMARKS REMARQUES BEMERKUNGEN
					A	B		
010	16611-6301-0	ASSY STARTER	ENS. DEMARREUR	GRP. ANLASSER	1	-		
020	16661-6308-0	ASSY YOKE	ENS. CHAPE	GRP. GABELGELENK	1	-		
030	11197-6307-0	ASSY ARMATURE	ENS. ARMATURE	GRP. ARMATUR	1	-		
040	11460-6350-0	BEARING	ROULEMENT	LAGER	1	-		
050	11460-6353-0	BEARING	ROULEMENT	LAGER	1	-		
060	16611-6304-0	CLUTCH, OVER RUNNING	EMBRAYAGE A INERTIE	AUFLAUFKUPPLUNG	1	-		
070	16611-6303-0	FRAME, DRIVE END	BATI	ANTRIEBSRAHMEN	1	-		
080	16611-6302-0	ASSY SWITCH, MAGNETIC	SOLENOIDE	GRP. MAGNETSCHALTER	1	-		
090	17341-6320-0	FRAME, END	BATI	RAHMEN	1	-		
100	11197-6338-0	ASSY HOLDER, BRUSH	ENS. SUPPORT	GRP. BUERSTENHALTER	1	-		
110	15401-6339-0	SPRING, BRUSH	RESSORT DE BALAI	SCHLEIFBUERSTENFEDER	4	-		
120	11460-6327-0	GEAR	ENGRENAGE	GETRIEBE	1	-		
130	11460-6311-0	RETAINER	SUPPORT	HALTESCHEIBE	1	-		
140	19212-6310-0	ROLLER	ROULEAU	ROLLE	5	-		
150	11460-6312-0	SPRING	RESSORT	FEDER	1	-		
160	19212-9713-0	BALL	BILLE	KUGEL	1	-		
170	11460-9331-0	BOLT	VIS	BOLZEN	2	-		
180	15511-9666-0	O RING	JOINT TORIQUE	O RING	2	-		
190	11197-6332-0	BOLT	VIS	BOLZEN	2	-		
200	15511-6376-0	ASSY BOLT	ENS. VIS	GRP. BOLZEN	2	-		
210	16611-6345-0	COVER	COUVERCLE	DECKEL	1	-		
220	16611-9202-0	NUT, HEXAGON	ECROU HEXAGONAL	MUTTER	1	-		
230	16611-6366-0	CORD, STOP SOLENOID	PRISE DE SOLENOIDE	CABLESTOPSOLENOID	1	-		
240	16285-9201-0	NUT, HEXAGON	ECROU HEXAGONAL	MUTTER	1	-		
250	16285-6357-0	PIPE, DRAIN	TUYAU DE DRAINAGE	DRANLEITUNG	1	-		
260	16612-6310-0	BAND, COVER	BANDE, COUVERCLE	FLACHRIEMEN	1	-		
270	16285-9805-0	ASSY COVER	ENS. COUVERCLE	GRP. DECKEL	1	-		

↔ Interchangeable; ≠ not interchangeable; ← new for old; → old for new

0600

**VALVE AND ROCKER ARM
SOUPAPES ET CULBUTEURS
VENTIL UND KIPPENARM**


16615-026-20

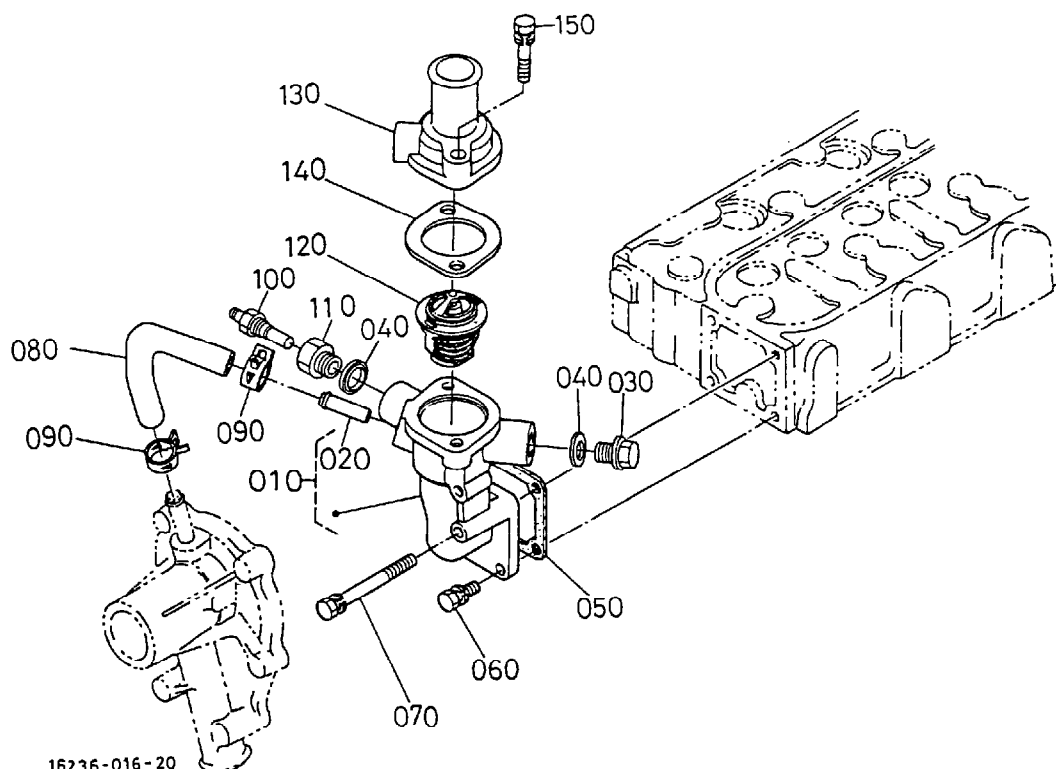
A: V1505-E2B-FERRARI-1

REF. No. POS. No. BILD-Nr.	PART No. REFERENCE BESELL-Nr.	PART NAME	DESIGNATION	BEZEICHNUNG	QTY/S. No. G' TE/No. S. STUECK/S. Nr.		I. C.	REMARKS REMARQUES BEMERKUNGEN
					A	B		
010	16241-1311-0	VALVE, INLET	SOUPAPE D' ADMISSION	EINLASSVENTIL	4	-		#ORDER BY 010, 020 NEW PARTS (SET)
010	16241-1311-5	VALVE, INLET	SOUPAPE D' ADMISSION	EINLASSVENTIL	4	-	≠	
020	16241-1311-0	VALVE, EXHAUST	SOUPAPE D' ECHAPMENT	AUSLASSVENTIL	4	-		#ORDER BY 010, 020 NEW PARTS (SET)
020	16241-1312-6	VALVE, EXHAUST	SOUPAPE D' ECHAPMENT	AUSLASSVENTIL	4	-	≠	
030	16271-1324-0	SPRING, VALVE	RESSORT DE SOUPAPE	VENTIL-FEDER	8	-		
040	16261-1333-0	RETAINER, SPRING	ARRETOIR DE RESSORT	HALTBUEGEL, FEDER	8	-		
050	15261-1336-0	COLLET, VALVE SPRING	DEMI CLAVETTE	KLEMMSCHEIBE	8	-		SET
060	1C010-1315-0	SEAL, VALVE STEM	JOINT DE SOUPAPE	VENTILDICHTUNG	8	-		
070	16241-1328-0	CAP, VALVE	CHAPEAU DE SOUPAPE	VENTILKAPPE	8	-		
080	16241-1426-4	SHAFT, ROCKER ARM	ARBRE DE CULBUTEUR	KIPPHEBELWELLE	1	-		
090	16241-1443-0	WASHER, R-ARM. SHAFT	RONDELLE	SCHEIBE	2	-		
100	15841-9402-2	WASHER, PLAIN	RONDELLE FREIN	SCHEIBE	2	-		
110	01023-50610	BOLT	VIS	BOLZEN	2	-		
120	16241-1435-0	BRACKET, ROCKER ARM	SUPPORT DE CULBUTEUR	KIPPHEBELHALTER	4	-		
130	05411-00428	PIN, SPRING	GOUPILLE-RESSORT	STIFT, FRUEHLING	1	-		
140	16241-1431-0	SPRING, ROCKER ARM	RESSORT DE CULBUTEUR	FEDER, KIPPHEBEL	3	-		
150	16241-1403-2	ASSY ROCKER ARM	ENS. CULBUTEURS	GRP. KIPPHEBEL	8	-		
160	16241-1423-0	SCREW, ADJUSTING	VIS DE REGLAGE	STELLSCHRAUBE	8	-		
170	16241-1424-0	NUT	ECROU	MUTTER	8	-		
180	16241-1441-0	STUD	GOUJON	STEBOLZEN	4	-		
190	15261-9201-0	NUT	ECROU	MUTTER	4	-		
200	15261-9401-0	WASHER, PLAIN	RONDELLE FREIN	SCHEIBE	4	-		

↔ Interchangeable; ≠ not interchangeable; ← new for old; → old for new

0500

WATER FLANGE AND THERMOSTAT
BRIDE A EAU ET THERMOSTAT
WASSERFLANSCH UND THERMOSTAT



16236-016-20

A: V1505-E2B-FERRARI-1

REF. No. POS. No. BILD-Nr.	PART No. REFERENCE BESELL-Nr.	PART NAME	DESIGNATION	BEZEICHNUNG	Q' TY/S. No. Q' TE/No. S. STUECK/S. Nr.		I. C.	REMARKS REMARQUES BEMERKUNGEN
					A	B		
010	19008-7270-0	COMP. FLANGE, WATER	BRIDE A EAU COMP.	KOMP. FLANSCH	1	-		
020	16241-7337-0	PIPE, WATER RETURN	TUYAU RETOUR D'EAU	WASSERROHR	1	-		
030	06311-55030	PLUG	BOUCHON	STOPFEN	1	-		
040	16261-9671-0	GASKET	JOINT	DICHTUNGSPLATTE	2	-		
050	16264-7292-0	GASKET, WATER FLANGE	JOINT DE BRIDE	DICHTUNG	1	-		
060	01023-50616	BOLT	VIS	BOLZEN	3	-		
070	01023-50655	BOLT	VIS	BOLZEN	1	-		
080	16241-7335-0	PIPE, WATER RETURN	TUYAU RETOUR D'EAU	WASSERROHR	1	-		
090	16241-7336-0	BAND, PIPE	COLLIER DE TUYAU	ROHRBAND	2	-		
100	19498-8304-0	ASSY THERMOSWITCH	ENS. THERMOINTERRUPT.	GRP. THERMOZUENDSCHA.	1	-		
110	16222-7284-0	ADAPTER	ADAPTATEUR	ZWISCHENSTUECK	1	-		#
110	16067-7284-0	ADAPTER, THERMOSWITCH	ADAPTATEUR	ZWISCHENSTUECK	≤=6Z9999 1 ≥=7A0001	-		≠ #
120	19434-7301-4	ASSY THERMOSTAT	THERMOSTAT COMP.	GRP. THERMOSTAT	1	-		
130	16219-7326-0	COVER, THERMOSTAT	COUV. DE THERMOSTAT	DECKEL, THERMOSTAT	1	-		
140	16221-7327-0	GASKET, THERMOSTAT	JOINT	DICHTUNG	1	-		
150	01123-50835	BOLT	VIS	BOLZEN	2	-		

↔ Interchangeable; ≠ not interchangeable; ← new for old; → old for new

