

**Redexim-Charterhouse Verti-Top WB Handlebar pag 03 code 0751**

	<b>PART #</b>	<b>DESCRIPTION</b>	<b>REMARKS</b>	<b>QUA</b>
1	830.080.080	Self Lock Nut M8		4
2	406.080.940	Distance Bush		1
3	468.022.150	Cover		1
4	804.050.100	Bolt M5 x 10		2
5	676.301.002	Throttle Lever		1
6	830.050.050	Self Lock Nut M5		2
7	476.028.250	Handlebar		1
8	464.030.140	Bracket		2
9	406.150.240	Distance Bush		1
10	864.160.030	Washer M16		1
11	804.080.300	Bolt M8x30		1
12	444.700.150	Cable Roll		1
13	402.100.100	Bush		2
14	804.101.200	Bolt M10 x 120		1
15	478.257.150	Driving Handle		1
16	446.200.835	Rubber Sleeve		1
17	830.100.100	Self Lock Nut M10		3
18	404.100.120	Flanged Bush		1
19	864.100.030	Washer M10		1
20	802.100.800	Bolt M10 x 80		1
21	830.060.060	Self Lock Nut M6		3
22	804.060.350	Bolt M6 x 35		2
23	804.100.250	Bolt M10 x 25		4
24	492.280.052	Handlebar Adapter		1
25	591.089.120	Idler Cable		1
26	492.280.050	Handlebar Adapter		1
27	804.080.200	Bolt M8 x 20		1
28	578.100.200	Belleville Spring 20 x 10,2 x 1,35		2
29	804.080.250	Bolt M8 x 25		1
30	464.061.200	Coupling Handle		1
31	892.060.300	Ball Knob		1
32	864.100.031	Large Washer M10		2
33	591.089.122	Cable For Coupling		1
34	591.050.870	Throttle Cable		1
35	802.081.100	Bolt M8 x 110		1
36	802.060.400	Bolt M6x40		1











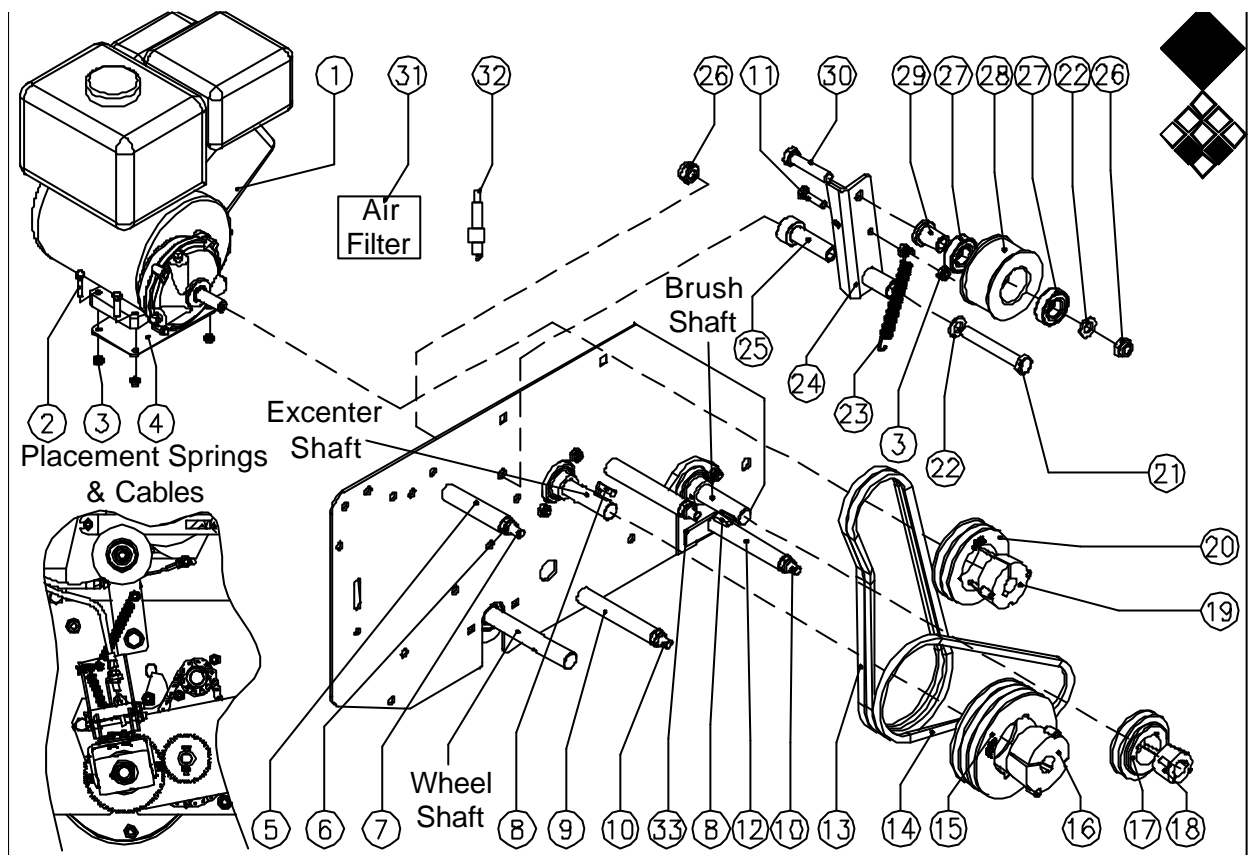










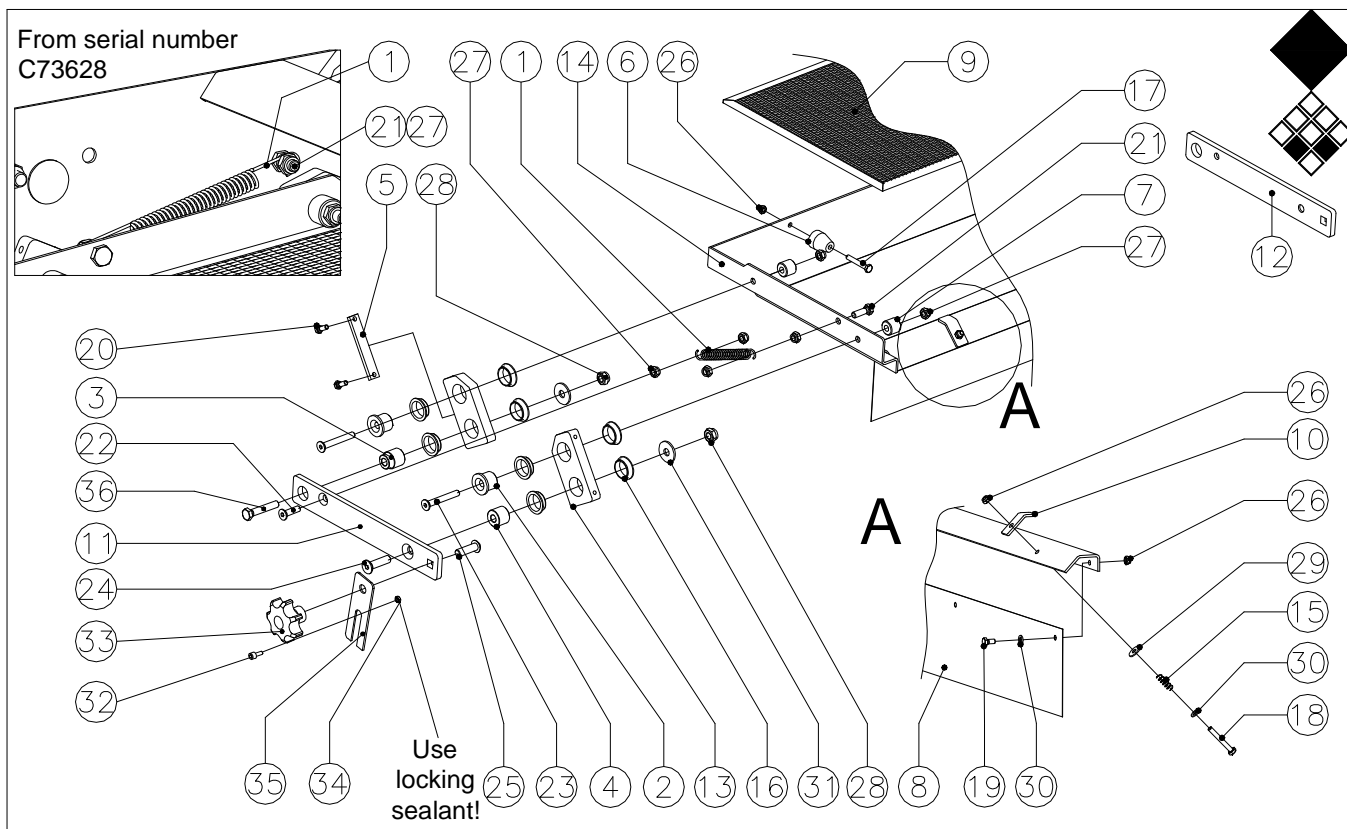


Redexim-Charterhouse Verti-Top WB Driveline 2 pag 11 code 0751

	PART #	DESCRIPTION	REMARKS	QUA
1	672.290.375	Engine		1
2	804.080.350	Bolt M8 x 35		4
3	830.080.080	Self Lock Nut M8		6
4	468.031.850	Plate		1
5	406.200.910	Distance Bush L = 91mm		1
6	830.100.100	Self Lock Nut M10		1
7	802.101.200	Bolt M10 x 120		1
8	884.060.250	Key 6 x 6 x 25		2
9	406.111.160	Distance Bush L = 116		2
10	802.101.400	Bolt M10 x 140		3
11	804.080.300	Bolt M8 x 30		1
12	406.201.112	Distance Bush L = 112		1
13	645.100.915	Kevlar V-Belt 3/8" x 36"		2
14	642.100.787	V-Belt XPZ 787		1
15	646.001.251	Pulley SPZ 125-3 TL 2012		1
16	648.202.010	Taperlock Bush 2012 20 mm		1
17	646.000.751	Pulley SPZ 75-1 TL 1108		1
18	648.201.108	Taperlock Bush 1108 20 mm		1
19	648.191.610	Taperlock Bush 1610 19 mm		1
20	646.000.902	Pulley SPZ 90-2 TL 1610		1
21	802.120.900	Bolt M12 x 90		1
22	864.120.030	Washer M12		1
23	575.029.000	Spring For Idler		1
24	492.041.400	Bracket Idler Pulley		1
25	404.300.460	Bush With Hub		1
26	830.120.120	Self Lock Nut M12		2
27	713.200.420	Bearing 6004 2RS		2
28	428.450.300	Idler Pulley		1
29	404.300.330	Idler Distance Shaft		1
30	802.120.550	Bolt M12 x 55		1
31	676.120.702	Spark Plug		1
32	676.101.000	Air Filter		1
33	492.065.060	Bracket		1







**Redxim-Charterhouse Verti-Top WB Shaking sieve pag 14 code 0922**

	<b>PART #</b>	<b>DESCRIPTION</b>	<b>REMARKS</b>	<b>QUA</b>
1	575.140.760	Tension spring	Till serial number C73628	2
	575.021.450	Tension spring	From serial number C73628	2
2	404.090.220	Bush		4
3	404.102.740	Distance bush		2
4	406.100.190	Distance bush		2
5	444.050.900	Strip		2
6	444.065.300	Lock plug		2
7	444.085.180	Distance bush		4
8	446.017.300	Rubber strip		1
9	458.823.400	Sieve assy 5x5mm		1
	458.823.401	Sieve assy 3.2x3.2mm		1
	458.823.402	Sieve assy 4x4mm		1
	458.823.403	Sieve assy 5.5x5.5mm		1
	458.823.404	Sieve assy 6x6mm		1
10	464.030.500	Lock strip		2
11	464.082.900	Strip		1
12	464.082.902	Strip		1
13	464.151.000	Strip		4
14	494.079.350	Weld assy frame sieve		1
15	576.020.250	Compression spring		2
16	732.240.080	Bearing bush		16
17	802.060.400	Bolt M6 x 40		2
18	802.060.450	Bolt M6 x 45		2
19	804.060.120	Bolt M6 x 12		3
20	804.060.160	Bolt M6 x 16		4
21	804.080.250	Bolt M8 x 25		2
22	816.080.300	Screw M8 x 30	Removed from serial number C73628	2
23	816.080.600	Screw M8 x 60		4
24	816.100.400	Screw M10 x 40		2
25	802.100.400	Bolt M10 x 40		2
26	830.060.060	Self lock nut M6		7
27	830.080.080	Self lock nut M8		12
28	830.100.100	Self lock nut M10		4
29	864.060.021	Large washer M6		2
30	864.060.030	Washer M6		5
31	864.100.031	Large washer M10		4
32	814.060.100	Cyl. Head Bolt M6 x 10		2
33	836.100.260	Knurled Knob M10		2
34	826.060.060	Nut M6		2
35	468.020.900	Angle Indicator		2
36	802.100.450	Bolt M10 x 45		2