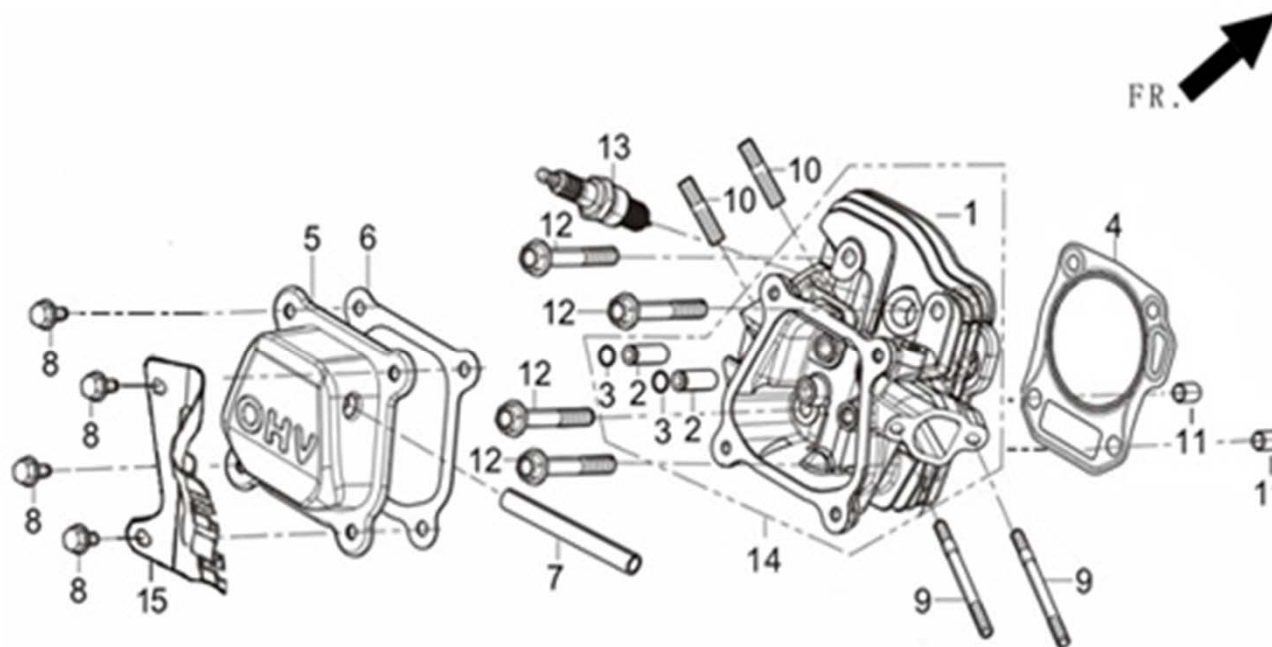


FIG.1 HEAD SUBASSEMBLY, CYLINDER / PLUG, SPARK (E04)

图1: 气缸头部件/火花塞 (E04)

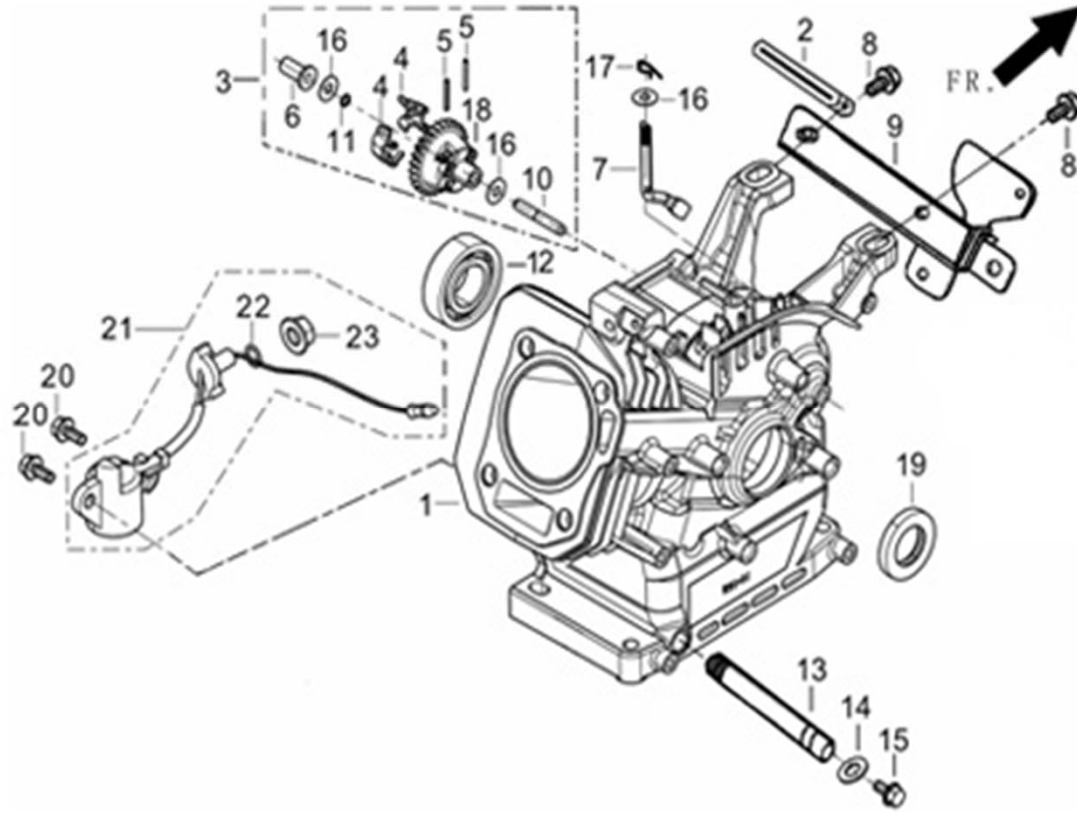


REF.NO.	新物料代码	DESCRIPTION	名称	Q'TY数量	包装数	价格
E04-1	12141-Z040110-0000	气缸头	HEAD, CYLINDER	1	0	
E04-2	12144-Z010110-0000	气门导管	GUIDE, EX VALVE	2	0	
E04-3	12146-Z010110-0000	气门导管挡圈	CIRCLIP, VALVE GUIDE	2	0	
E04-4	12131-Z140110-0000	气缸头密封垫	GASKET, CYLINDER HEAD	1	1	
E04-5	12410-Z300110-0000	气缸头盖组合	COVER SUBASSEMBLY, CYLINDER HEAD (BLACK)	1	1	
E04-6	12004-Z010110-0000	气缸头盖密封垫	GASKET, CYLINDER HEAD COVER	1	1	
E04-7	17004-Z050110-0000	废气管	TUBE, BREATHER	1	1	
E04-8	90001-0612-01	六角法兰面螺栓-小系列	BOLT	4	1	
E04-9	90207-Z330110-0000	双头螺柱	STUD	2	1	
E04-10	90203-Z010110-0000	双头螺柱 (bm=1.5d)	STUD	2	1	

E04-11	90502-1014-00	定位销-A型	PIN	2	1	
E04-12	12003-Z010110-0000	气缸头螺栓	BOLT, CYLINDER HEAD	4	1	
E04-13	30010-Z050110-0000	火花塞	PLUG, SPARK	1	1	
E04-14	12140-Z040110-0000	气缸头组合	HEAD SUBASSEMBLY, CYLINDER	1	1	
E04-15	80057-Z330110-0000	前挡雪板	BOARD, FRONT SNOW	1	1	

FIG. 2 CRANKCASE. / GEAR ASSY, GOVERNOR. 曲轴箱体部件+调速齿轮部件(E17)

图2：曲轴箱体部件+调速齿轮部件(E17)

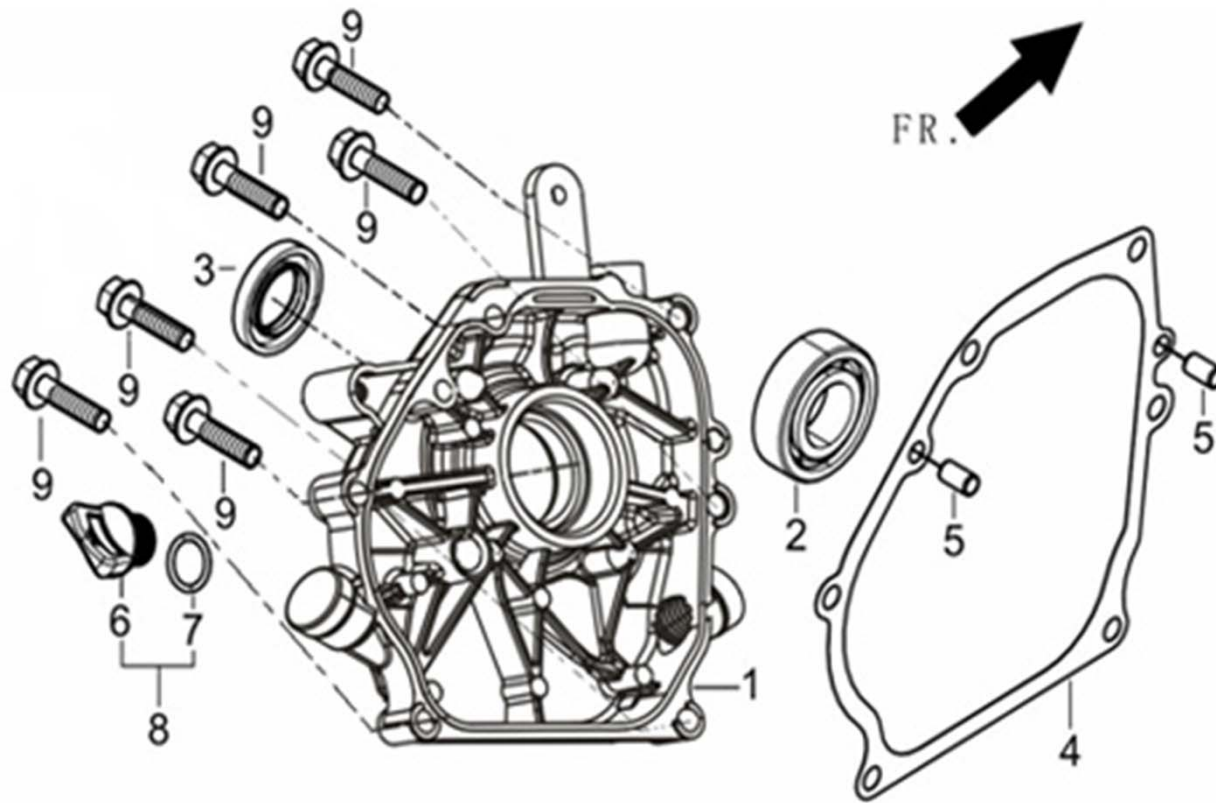


REF.NO.	新物料代码	DESCRIPTION	名称	Q'TY数量	包装数	价格
E17-1	11310-Z330110-0000	曲轴箱体组合	CRANKCASE SUBASSEMBLY.	1	1	
E17-2	90684-Z030120-0000	线夹	CLIP	1	1	
E17-3	16400-Z010110-0000	调速齿轮部件	GEAR ASSY, GOVERNOR	1	1	
E17-4	16421-Z010110-0000	调速齿飞块	WEIGHT, GOVERNOR GEAR	2	0	
E17-5	16424-Z010110-0000	调速齿飞块芯轴	SPINDLE, GOVERNOR GEAR FLYWEIGHT	2	0	

E17-6	16401-Z010110-0000	调速帽	SLIDER, GOVERNOR	1	1	
E17-7	16061-Z010110-0000	调速臂	ARM, GOVERNOR	1	1	
E17-8	90001-0612-01	六角法兰面螺栓-小系列	BOLT	2	1	
E17-9	30360-Z330110-0000	控制盒安装支架组合	BOX SUBASSEMBLY, SUPPORT CONTROL	1	1	
E17-10	16411-Z010110-0000	调速芯轴	SPINDLE, GOVERNOR	1	0	
E17-11	16402-Z010110-0000	调速芯轴卡圈	CIRCLIP, GOVERNOR SPINDLE	1	0	
E17-12	90547-0205-00	深沟球轴承-P53	BEARING 6205/P53	1	1	
E17-13	11011-Z050110-0000	放油管	TUBE, DRAIN	1	1	
E17-14	90408-Z010110-0000	平垫圈_A级	WASHER	1	1	
E17-15	11007-Z010110-0000	放油螺栓	BOLT, PLUG, DRAIN	1	1	
E17-16	90408-Z010210-0000	平垫圈_A级	WASHER, GOVERNOR GEAR	3	1	
E17-17	90501-Z010110-0000	开口销	PIN, LOCK	1	1	
E17-18	16423-Z010110-0000	调速从动齿	GEAR, GOVERNOR DRIVEN	1	0	
E17-19	90682-Z050110-0000	油封	SEAL, OIL	1	1	
E17-20	90001-0614-01	六角法兰面螺栓-小系列	BLOT	2	1	
E17-21	37060-Z010110-0000	机油传感器	SENSOR, ENGINE OIL	1	1	
E17-22	90681-Z010210-0000	密封圈	RING, SEAL	1	0	
E17-23	90306-1000-31	六角法兰面螺母-细牙	NET	1	0	

FIG. 3 COVER SUBASSEMBLY, CRANKCASE (E01)

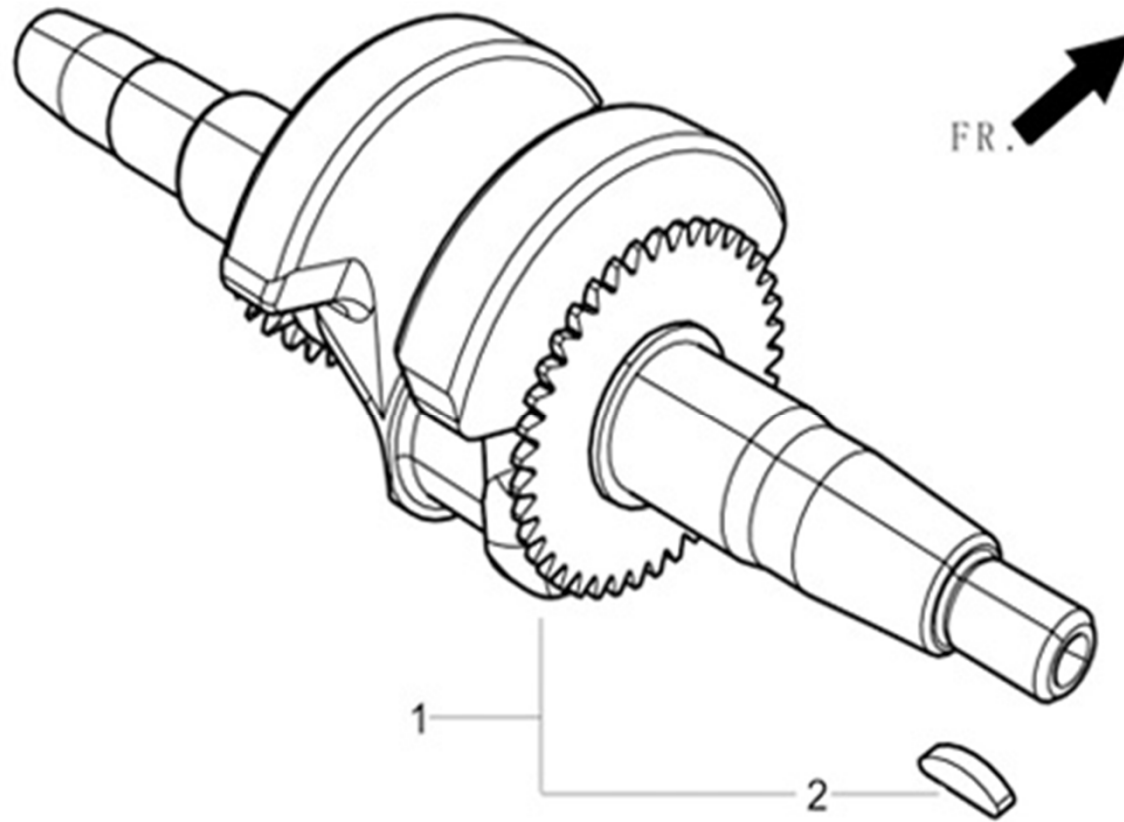
图3： 曲轴箱盖部件(E01)



REF.NO.	新物料代码	DESCRIPTION	名称	Q'TY数量	包装数	价格
E01-1	11411-Z330110-0000	曲轴箱盖	COVER, CRANKCASE	1	1	
E01-2	90547-0205-00	深沟球轴承-P53	BEARING	1	1	
E01-3	90682-Z050110-0000	油封	SEAL, OIL	1	1	
E01-4	11001-Z330110-0000	曲轴箱密封垫	GASKET, CRANKCASE	1	1	
E01-5	90502-0812-00	定位销-A型	PIN	2	1	
E01-6	15031-Z010110-Q500	机油塞	PLUG, ENGINE OIL	1	0	
E01-7	90681-Z010310	密封圈	RING, SEAL	1	0	
E01-8	15030-Z010110-Q500	机油塞组合	PLUG SUBASSEMBLY, ENGINE OIL	1	1	
E01-9	90001-0832-01	六角法兰面螺栓-小系列	BOLT	6	1	

FIG. 4 ROD, CRANKSHAFT CONNETING (E03)

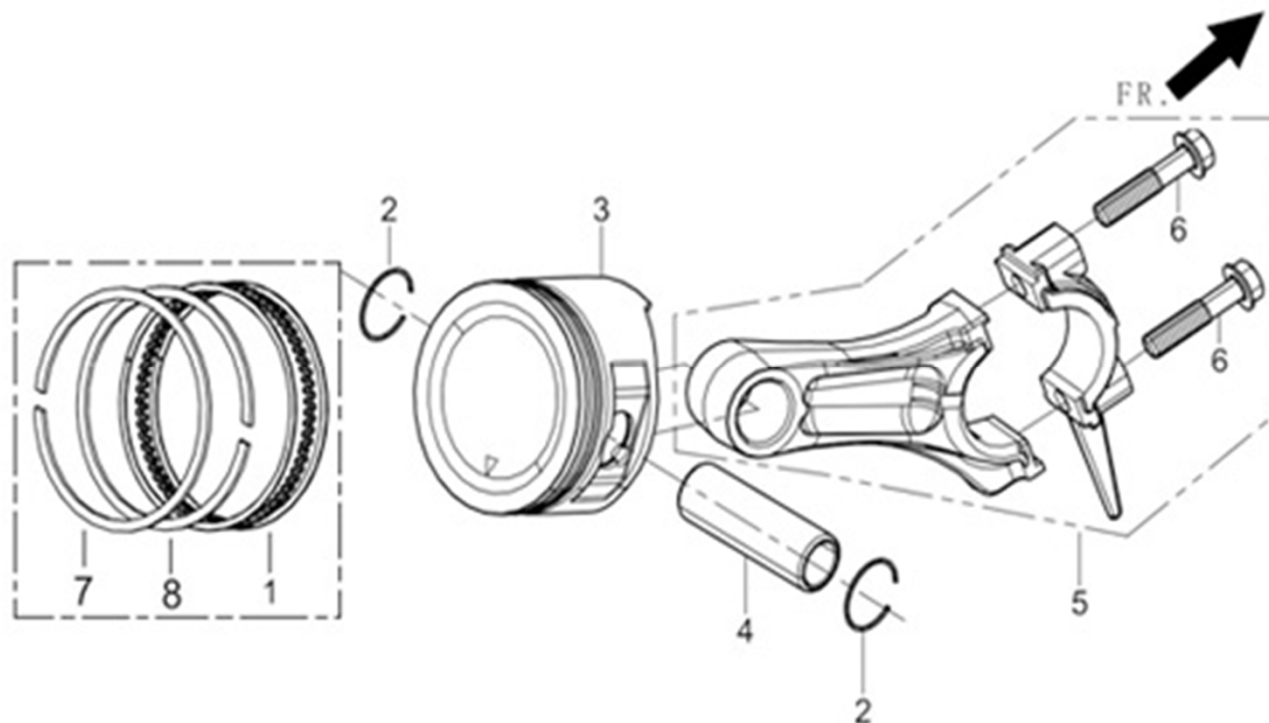
图4：曲柄连杆组件(E03)



REF.NO.	新物料代码	DESCRIPTION	名称	Q'TY数量	包装数	价格
E03-1	13300-Z050510-0000	曲轴部件	CRANKSHAFT ASSY.	1	1	
E03-2	90524-Z010110-0000	半圆键	Key	1	1	

FIG. 5 RING SET, OIL / ROD, CRANKSHAFT CONNETING (E03)

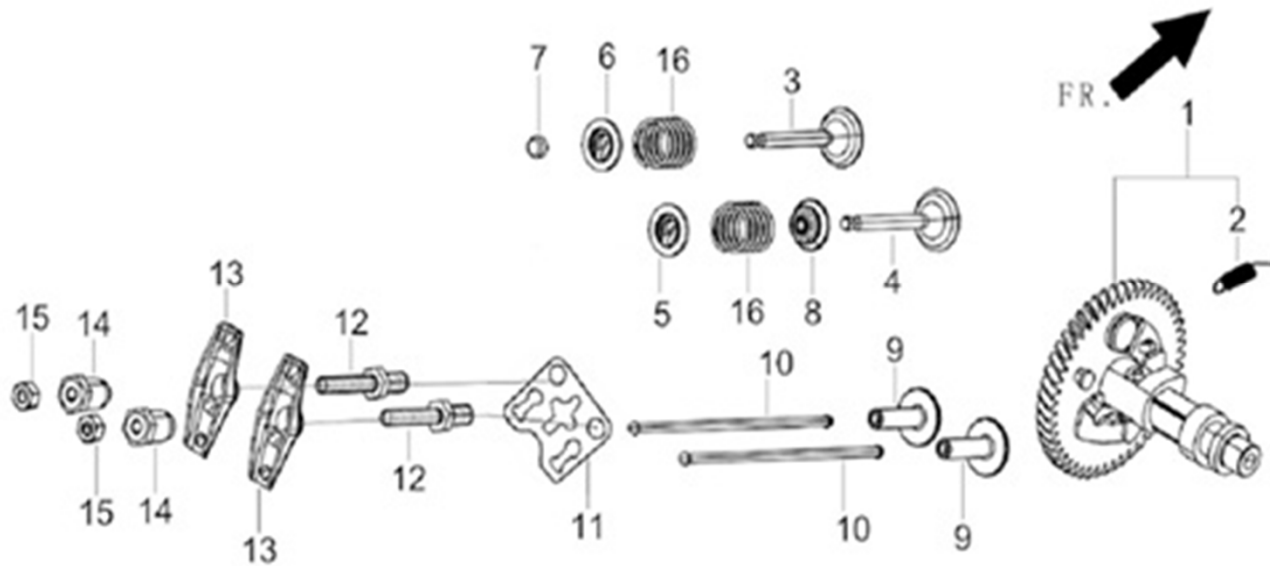
图5：油环组合/曲柄连杆组件（E03）



REF.NO.	新物料代码	DESCRIPTION	名称	Q'TY数量	包装数	价格
E03-1	13210-Z140110-0000	油环组合	RING SET, OIL	1	1	
E03-2	13122-Z010110-0000	活塞销卡圈	CLIP, PISTON PIN	2	1	
E03-3	13111-Z140110-0000	活塞	PISTON	1	1	
E03-4	13121-Z010110-0000	活塞销	PIN, PISTON	1	1	
E03-5	13010-Z010110-0000	连杆	ROD, CONNECTING	1	1	
E03-6	13013-Z010110-0000	连杆螺栓	BOLT, CONNECTING ROD	2	0	
E03-7	13201-Z140110-0000	一环	RING, THE FIRST	1	1	
E03-8	13202-Z140110-0000	二环	RING, THE SECON	1	1	

FIG. 6 TRAIN, VALVE / CAMSHAFT SUBASSEMBLY (E05)

图6：配气机构组件/凸轮轴（E05）

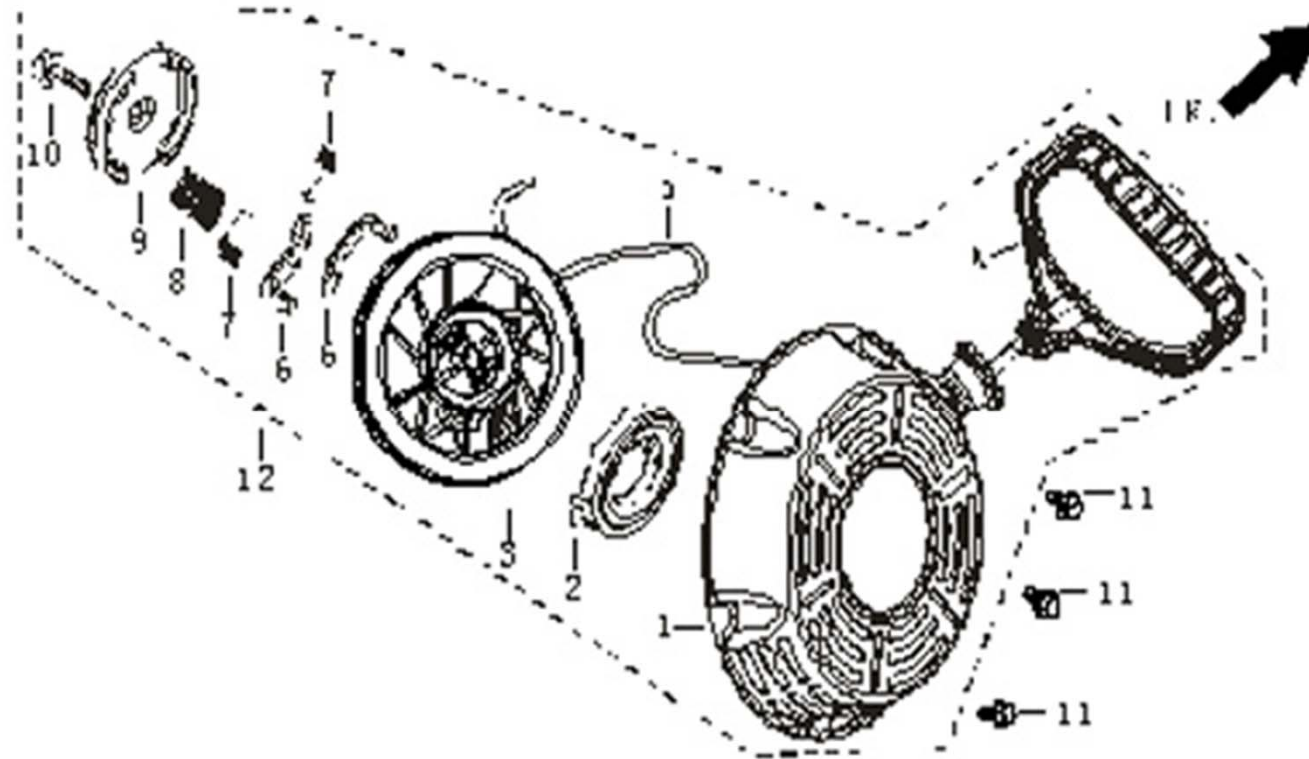


REF.NO.	新物料代码	DESCRIPTION	名称	Q'TY数量	包装数	价格
E05-1	14200-Z040110-0000	凸轮轴部件	CAMSHAFT ASSY.	1	1	
E05-2	14234-Z010110-0000	飞块拉簧	SPRING, FLYWEIGHT TENSION	1	0	
E05-3	12121-Z010110-0000	排气门	VALVE, EXHAUST	1	1	
E05-4	12111-Z010110-0000	进气门	VALVE, INTAKE	1	1	
E05-5	12112-Z010110-0000	气门弹簧座	SEAT, VALVE SPRING	1	1	
E05-6	12107-Z010110-0000	排气门弹簧座	RETAINER, EXHAUST VALVE	1	1	
E05-7	12104-Z010110-0000	气门调整帽	ROTATOR, VALVE	1	1	
E05-8	12101-Z010110-0000	挡油罩	GUIDE, SEAL	1	1	
E05-9	14081-Z040110-0000	气门挺柱	TAPPET, VALVE	2	1	
E05-10	14071-Z010110-0000	气门挺杆	LIFTER, VALVE	2	1	
E05-11	14090-Z010110-0000	挺杆限位板组合	PLATE SUBASSEMBLY, LIFTER STOPPER	1	1	
E05-12	14313-Z010110-0000	摇臂轴螺栓	BOLT, VALVE ADJUSTING	2	1	

E05-13	14311-Z010110-0000	气门摇臂	ROCKER, VALVE	2	1	
E05-14	14314-Z010110-0000	气门调节螺母	NUT, VALVE ADJUSTING	2	1	
E05-15	14312-Z010110-0000	气门锁紧螺母	NUT, VALVE LOCK	2	1	
E05-16	12103-Z010110-0000	气门弹簧	SPRING, VALVE	2	1	

FIG. 7 STARTER, RECOIL (E08)

图7：手起动组件（E08）

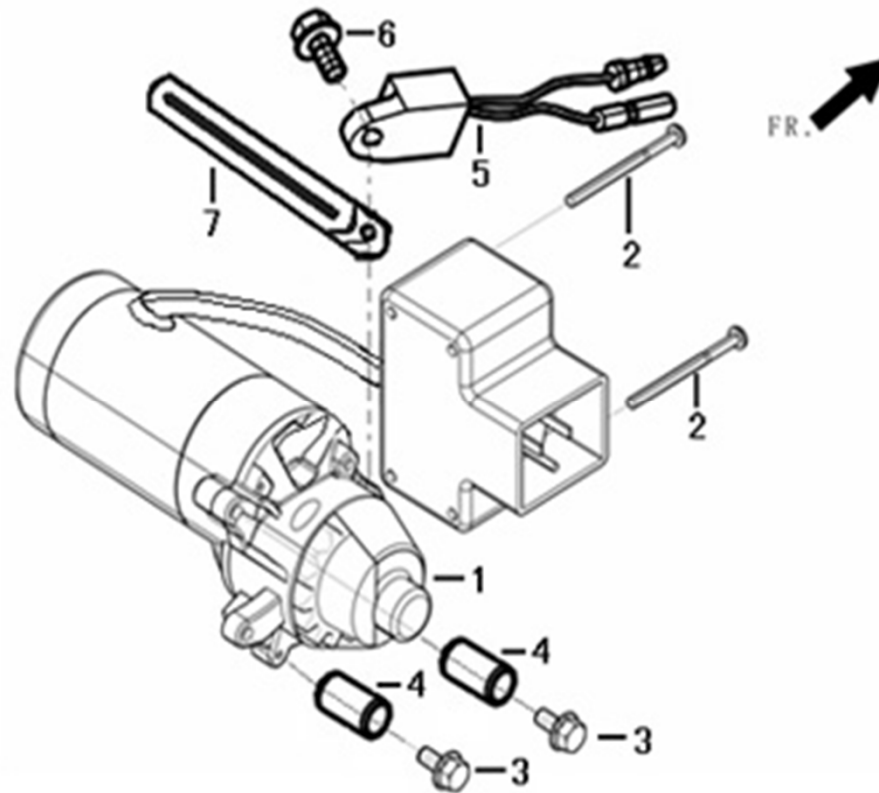


REF.NO.	新物料代码	DESCRIPTION	名称	Q'TY数量	包装数	价格
E08-1	28233-Z330110-0000	拉绳盘罩	CASE COMP, RECIOL STARTER	1	0	
E08-2	28225-Z050110-0000	起动器盘簧	SPRING, RECOIL STARTER	1	0	
E08-3	28229-Z050110-0000	起动拉绳盘	REEL, RECOIL STARTER	1	0	
E08-4	28210-Z050110-0000	起动拉绳手柄	HANDLE, RECOIL STRATE	1	1	
E08-5	28221-Z050110-0000	起动拉绳	ROPE, RECOIL STARTER	1	1	
E08-6	28239-Z050110-0000	驱动凸轮	CAM, DRIVER	2	0	

E08-7	28226-Z050110-0000	复位弹簧	SPRING, RETURN	2	0	
E08-8	28224-Z050110-0000	压缩弹簧	SPRING	1	0	
E08-9	28242-Z050110-0000	驱动导向板	GUIDE TRAY, DRIVER	1	0	
E08-10	28228-Z050110-0000	导盘紧固螺钉	SCREW, GUIDE TRAY	1	0	
E08-11	90001-0608-01	六角法兰面螺栓-小系列	BOLT, (FLANGE)	3	1	
E08-12	28200-Z330110-H300	手起动部件	STARTER ASSY, RECOIL	1	1	

FIG. 8 START-UP ELECTRIC MACHINE COMPONENTS (E09)

图8：启动电机部件（E09）

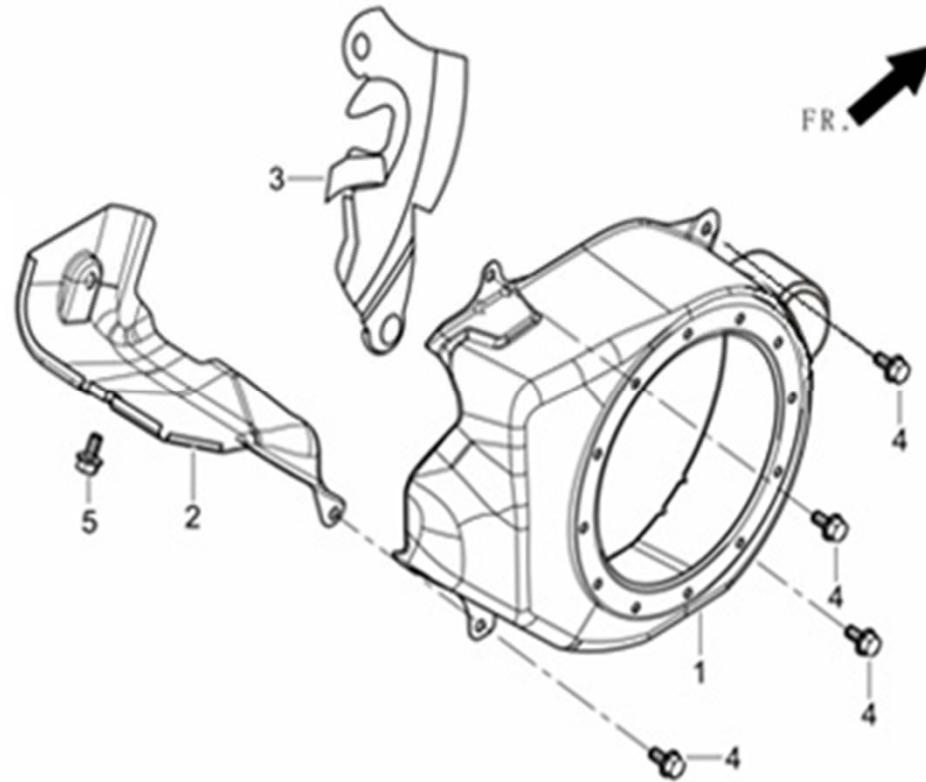


REF.NO.	新物料代码	DESCRIPTION	名称	Q'TY数量	包装数	价格
E09-1	30300-Z050110-0000	起动电机部件	STARTING MOTOR COMP	1	1	
E09-2	90103-0452-51	十字槽盘头螺钉	SCREW	2	1	
E09-3	90001-0630-01	六角法兰面螺栓-小系列	BLOT	2	1	
E09-4	90502-0810-00	定位销-A型	PIN	2	1	

E09-5	37050-Z010210-0000	机油保护器	PROTECTOR, OIL	1	1	
E09-6	90001-0512-01	六角法兰面螺栓-小系列	BLOT	1	1	
E09-7	90684-Z030120-0000	线夹	CILP	1	1	

FIG. 9 SHROUD / SHIELD, LOWER (E14)

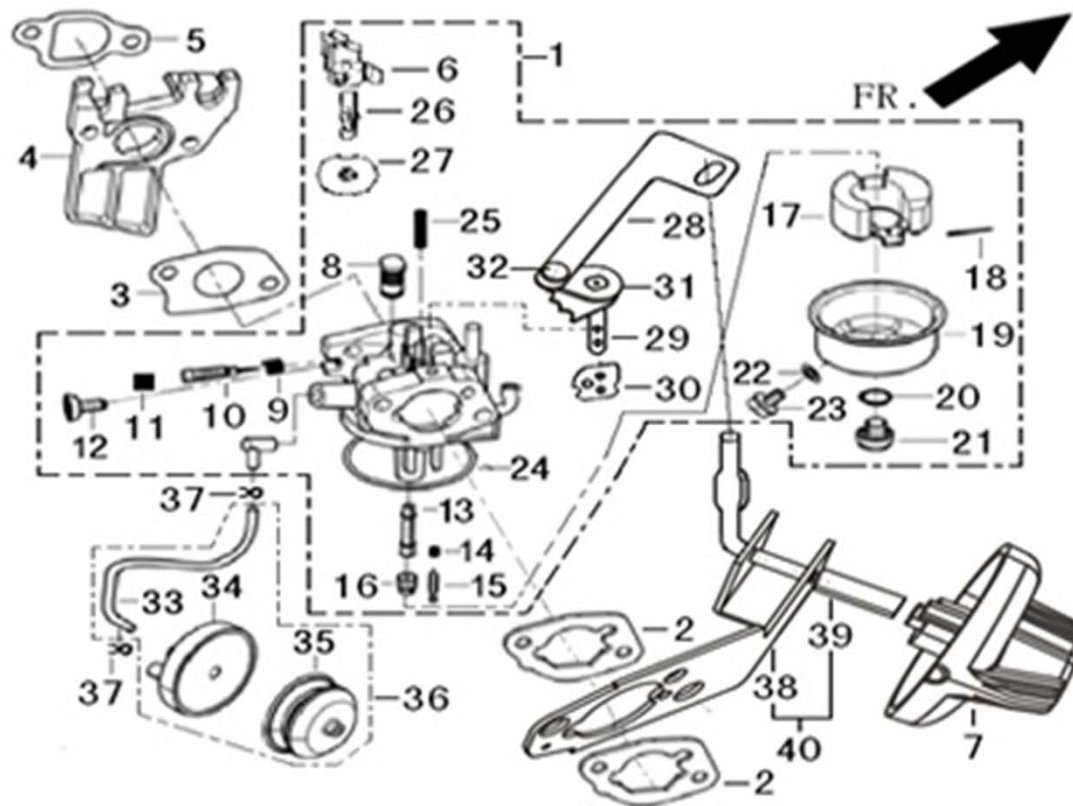
图9: 缸体导风罩/下护罩 (E14)



REF.NO.	新物料代码	DESCRIPTION	名称	Q'TY数量	包装数	价格
E14-1	28110-Z050110	导风罩	SHROUD	1	1	
E14-2	19304-Z010110-0000	缸体导风罩	SHROUD, CYLINDER BODY	1	1	
E14-3	19340-Z050110-0000	下护罩	SHIELD, LOWER	1	1	
E14-4	90001-0612-01	六角法兰面螺栓-小系列	BOLT	4	1	
E14-5	90001-0610-01	六角法兰面螺栓-小系列	BOLT	1	1	

FIG. 10 CARBURETOR ASSY. 化 (E11)

图10: 化油器部件 (E11)

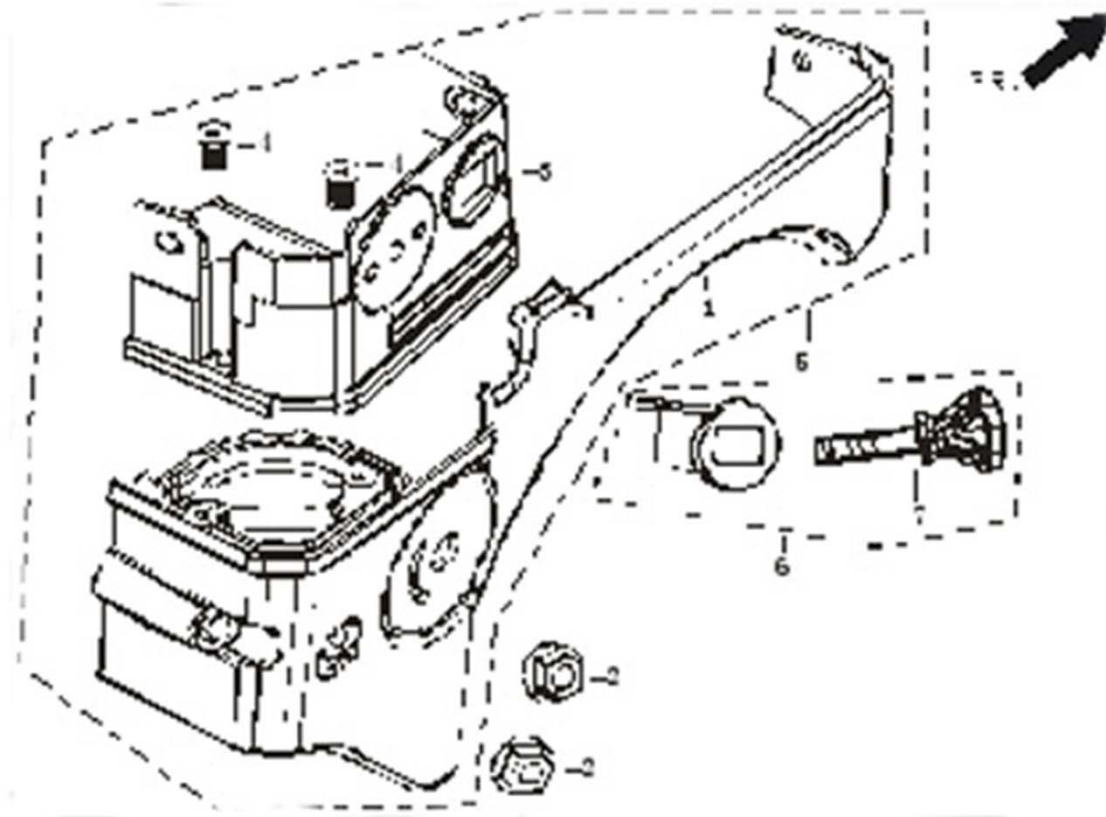


REF.NO.	新物料代码	DESCRIPTION	名称	Q'TY数量	包装数	价格
E11-1	16100-Z330110-0000	化油器部件	CARBURETOR ASSY.	1	1	
E11-2	17001-Z330110-0000	空滤器密封垫	GASKET, AIR CLEANER	2	1	
E11-3	16001-Z050110-0000	化油器密封垫	GASKET, CARBURETOR	1	1	
E11-4	16003-Z050110-0000	化油器隔热板	PLATE, CARBURETOR INSULATOR	1	1	
E11-5	16002-Z050110-0000	化油器隔热垫	GASKET, CARBURETOR INSULATOR	1	1	
E11-6	16184-Z050110-0000	节气门操纵臂	ARM, VALVE CONTROL	1	0	
E11-7	16235-Z330110-Q100	化油器阻风门手柄胶套	SLEEVE, CARBURETOR CHOKE HANDLE RUBBER	1	0	
E11-8	16165-Z010110-0000	怠速量孔	JET, IDLE SPEED	1	0	
E11-9	16167-Z050110-0000	怠速混合比调节螺钉弹簧	SPRING, IDLE SPEED MIXED RATIO ADJUSTING SCREW	1	0	
E11-10	16162-Z050110-0000	怠速混合比调节螺钉	SCREW, IDLE SPEED MIXED RATIO ADJUSTING	1	0	
E11-11	16163-Z050110-0000	怠速混合比调节螺钉帽	COVER, IDLE SPEED MIXED RATIO ADJUSTING SCREW	1	0	
E11-12	16164-Z050110-0000	怠速调节螺钉	SCREW, IDLE SPEED ADJUSTING	1	0	

E11-13	16105-Z050110-0000	主喷管	NOZZLE, MAIN	1	0	
E11-14	16223-Z050110-0000	浮子弹簧	SPRING, FLOAT	1	0	
E11-15	16142-Z050110-0000	进油针阀	VALVE, FILLING OIL NEEDLE	1	0	
E11-16	16161-Z330110-0000	主量孔	JET, MAIN	1	0	
E11-17	16221-Z050110-0000	浮子	FLOAT	1	0	
E11-18	16222-Z050110-0000	浮子销	PIN, FLOAT	1	0	
E11-19	16771-Z050110-0000	沉淀杯	CUP, DEPOSITION	1	0	
E11-20	90681-Z050110-0000	密封圈	WASHER	1	0	
E11-21	16192-Z050110-0000	油杯螺栓	BOLT, OIL CUP	1	0	
E11-22	90681-Z050310-0000	密封圈	WASHER	1	0	
E11-23	16193-Z050110-0000	油杯放油螺塞	PLUG, OIL CUP DRAIN	1	0	
E11-24	16112-Z050110-0000	浮子室密封垫	GASKET, FLOAT CHAMBER	1	0	
E11-25	16234-Z050110-0000	阻风门限位弹簧	SPRING, CHOKE	1	0	
E11-26	16182-Z050110-0000	节气门轴	SHAFT,VALVE	1	0	
E11-27	16181-Z050110-0000	节气门	VALVE	1	0	
E11-28	16123-Z330110-0000	阻风门拉杆	HANDLE, CARBURETOR CHOKE	1	0	
E11-29	16232-Z330110-0000	阻风门轴	SHAFT, CHOKE	1	0	
E11-30	16231-Z330110-0000	阻风门	CHOKE	1	0	
E11-31	16528-Z330110-0000	阻风门操纵臂	ARM, CHOKE CONTROL	1	0	
E11-32	24033-Z330110-0000	制动板铆钉	RIVET, BRAKE PLATE	1	0	
E11-33	16211-Z050110-0000	起动加浓阀管	TUBE, INRICHMENT VALVE	1	1	
E11-34	16212-Z050110-0000	起动加浓阀座	RETAINER, INRICHMENT VALVE	1	1	
E11-35	16213-Z050110-0000	起动加浓阀体	BODY, INRICHMENT VALVE	1	1	
E11-36	16210-Z050110-0000	起动加浓阀	RETAINER, INRICHMENT VALVE	1	1	
E11-37	90740-Z050110-0000	卡箍	PIN, LOCK	2	1	
E11-38	16901-Z330110-0000	阻风门控制部件本体	CONTROL ASSY BODY, CHOKE	1	0	
E11-39	16902-Z330110-0000	转杆	ROD, TURNING	1	0	
E11-40	16900-Z330110-0000	阻风门控制部件	CHOKE SUBASSEMBLY	1	1	

FIG. 11 CLEANER, AIR (F02)

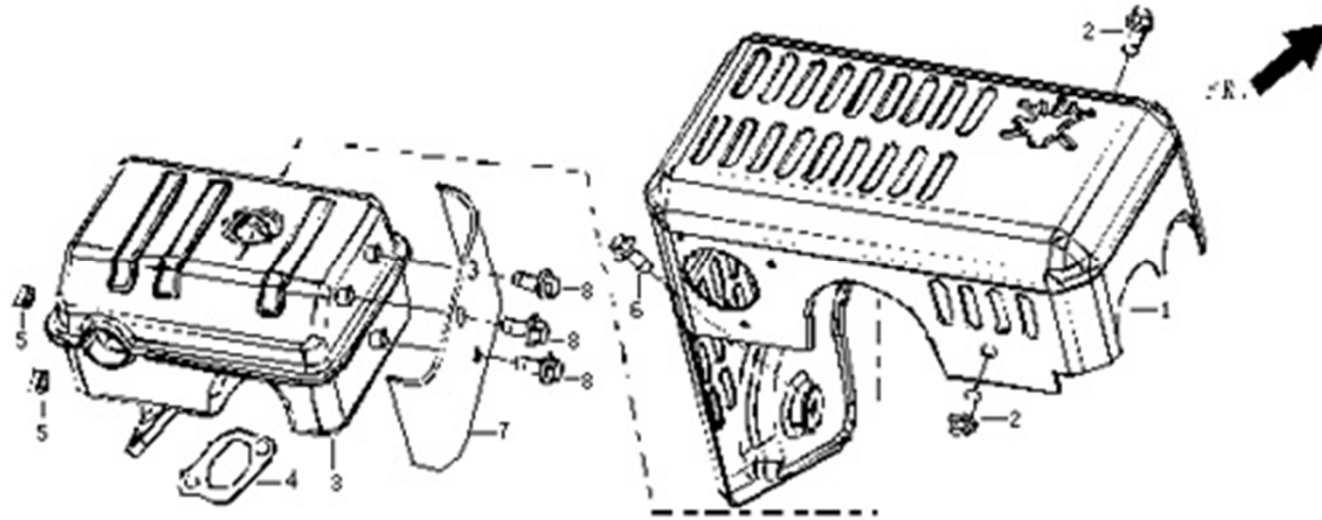
图11: 空滤器 (F02)



REF.NO.	新物料代码	DESCRIPTION	名称	Q'TY数量	包装数	价格
F02-1	17103HZ330110-0000	空滤器下壳体	BODY, BELOW, AIR CLEANER	1	0	
F02-2	90305-0600-31	六角法兰面螺母	NET	2	1	
F02-3	17101HZ330110-0000	空滤器壳体	BODY, AIR CLEANER	1	1	
F02-4	90107-4219-53	十字槽盘头自攻螺钉	SCREW	2	0	
F02-5	17100-Z330110-0000	空滤器	AIR, CLEANER	1	1	
F02-6	35540-Z330110-0000	熄火开关组合	SWITCH SUBASSEMBLY, START	1	1	
F02-7	35552-Z330110-0000	熄火开关钥匙	KEY, START SWITCH	1	1	

FIG.12 MUFFLER ASSY. (F04)

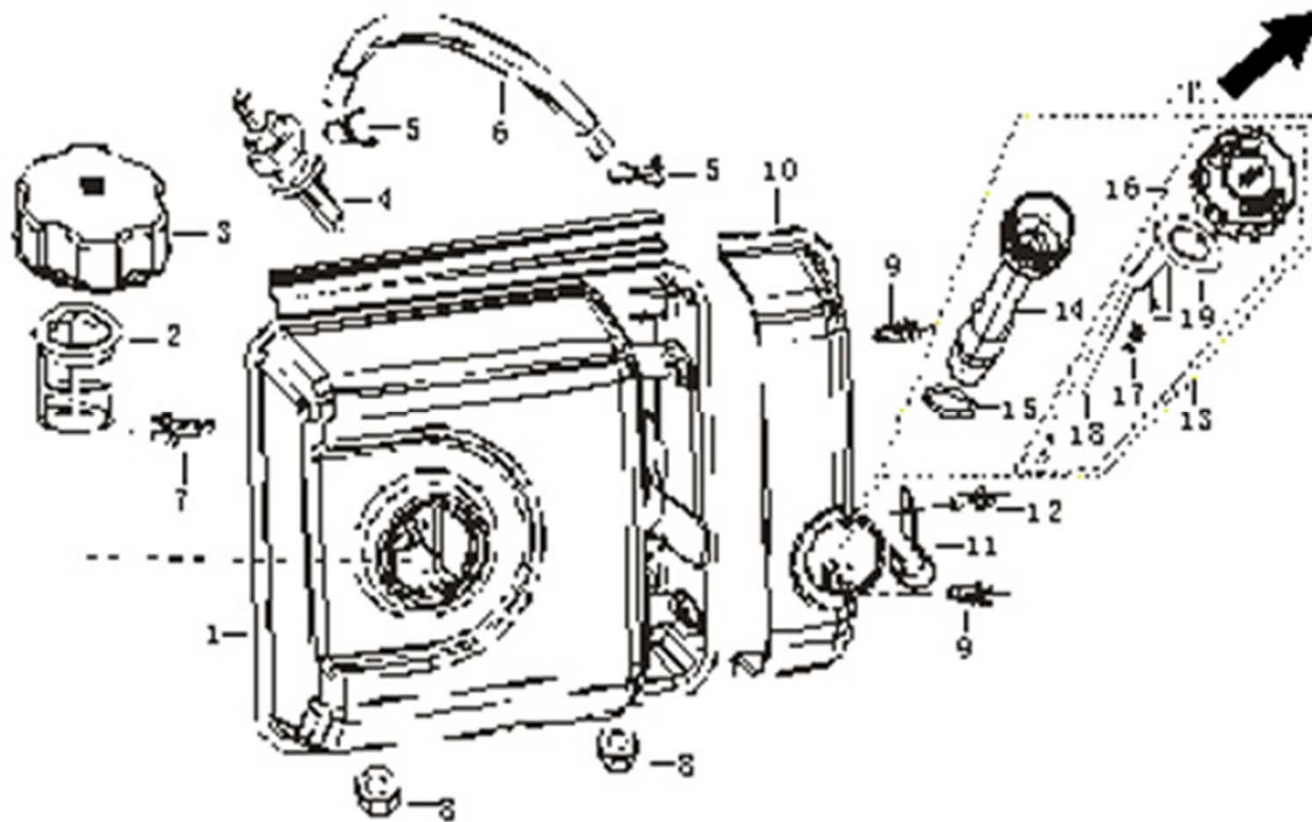
图12: 消声器部件 (F04)



REF.NO.	新物料代码	DESCRIPTION	名称	Q'TY数量	包装数	价格
F04-1	18140-Z330110-H300	防烫罩	PROTECTOR, MUFFLER	1	1	
F04-2	90001-0610-01	六角法兰面螺栓-小系列	BOLT	2	1	
F04-3	18160-Z330110-0000	消声器体	BODY, MUFFLER	1	1	
F04-4	18001-Z010110-0000	排气口密封垫	GASKET, EXHAUST	1	1	
F04-5	90303-0800-31	1型六角螺母	NUT	2	1	
F04-6	90001-0612-01	六角法兰面螺栓-小系列	BOLT	1	0	
F04-7	18020-Z330120-0000	消声器隔热板	PLATE, MUFFLER INSULATOR	1	0	
F04-8	90001-0608-01	六角法兰面螺栓-小系列	BOLT	3	0	

FIG. 13 TANK ASSY, FUEL (F01)

图13: 油箱部件 (F01)

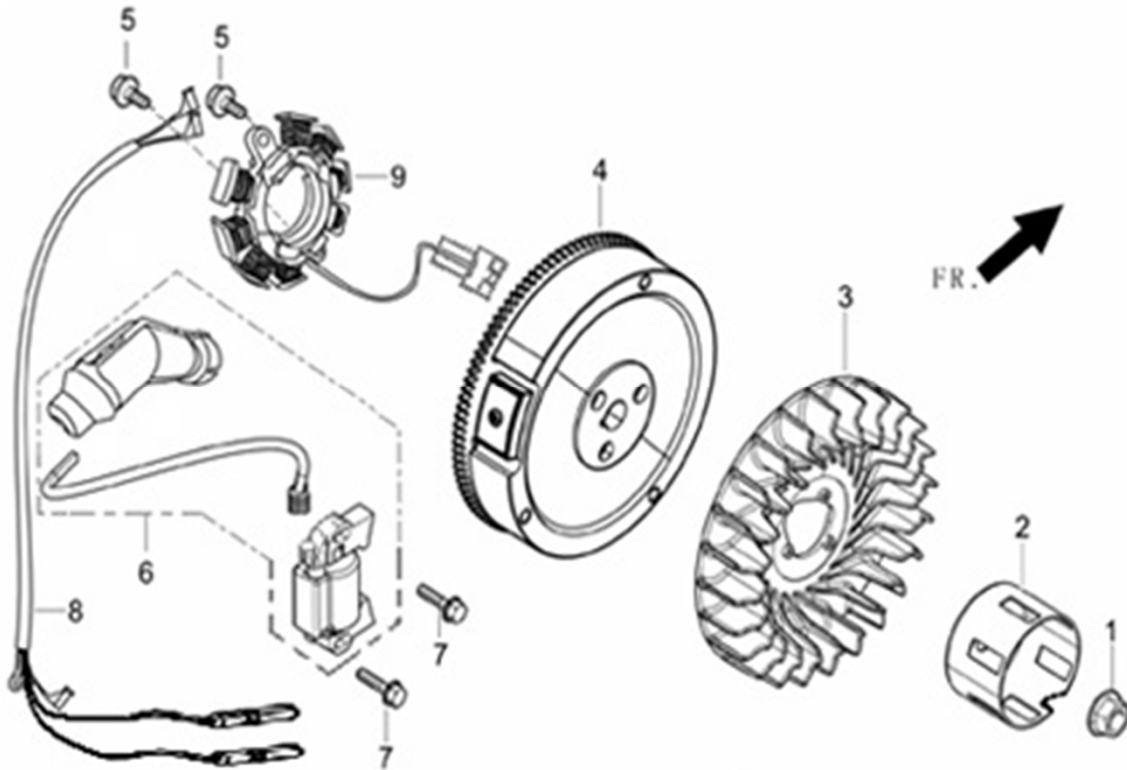


REF.NO.	新物料代码	DESCRIPTION	名称	Q'TY数量	包装数	价格
F01-1	16620-Z330110-H300	油箱	TANK, FUEL	1	1	
F01-2	16652-Z010110-0000	燃油滤网	STRAINER, FUEL	1	1	
F01-3	16730-Z050110-Q100	油箱盖	COVER, FUEL TANK	1	1	
F01-4	16680-Z010110-0000	出油嘴组合	CHOKE COMP, EXHAUT	1	1	
F01-5	90740-Z010210-0000	卡箍	CLIP, TUBE	2	1	
F01-6	90686-Z330110-0000	油管	TUBE, FUEL	1	1	
F01-7	90001-0630-01	六角法兰面螺栓-小系列	BOLT	1	1	
F01-8	90305-0600-31	六角法兰面螺母	NET	2	1	
F01-9	90001-0612-01	六角法兰面螺栓-小系列	BOLT	2	1	
F01-10	16667-Z330110-0000	油箱装饰板	PLATE, FUEL TANK DECORATED	1	0	
F01-11	15005-Z330110-0000	机油加油管抱箍	HOOP, OIL FUELING TUBE	1	0	
F01-12	90001-0610-01	六角法兰面螺栓-小系列	BOLT	1	0	
F01-13	15010-Z330110-Q500	机油尺组合	DIPSTICK SUBASSEMBLY, OIL	1	1	
F01-14	15020-Z330110-0000	机油加油管	TUBE, FUELING	1	1	

F01-15	90681-Z010310-0000	密封圈	RING, SEAL	1	1	
F01-16	15004-Z330110-0000	机油尺盖	CAP, OIL DISPSTICK	1	0	
F01-17	90107-4812-53	十字槽盘头自攻螺钉	SCREW	1	0	
F01-18	15011-Z330110-Q500	机油尺	DIPSTICK , OIL	1	0	
F01-19	90412-Z330110-0000	平垫圈	WASHER	1	0	

FIG. 14 FLYWHEEL / IMPELLER / STARTER PULLEY / IGNITION COIL (E15)

图14: 飞轮/叶轮/启动杯/点火线圈 (E15)

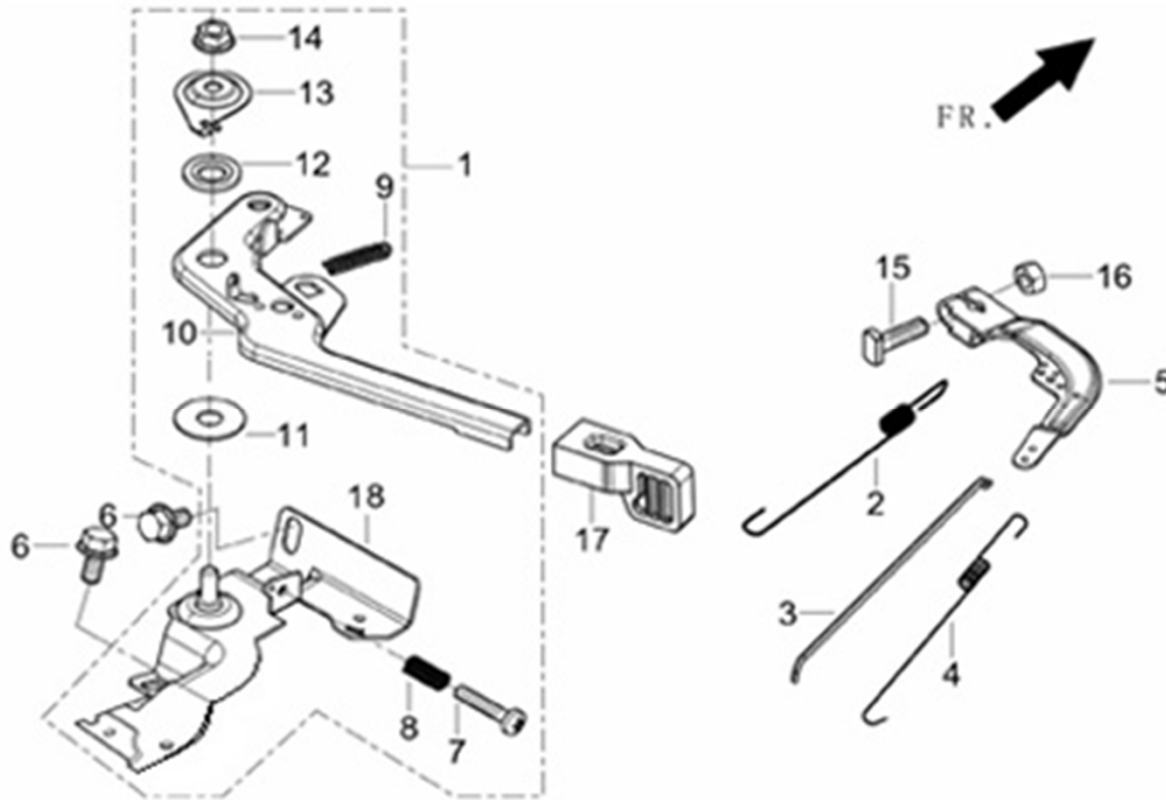


REF.NO.	新物料代码	DESCRIPTION	名称	Q'TY数量	包装数	价格
E15-1	13501-Z010110-0000	飞轮螺母	NUT, FLYWHEEL	1	1	
E15-2	28002-Z010120-0000	启动杯	PULLEY, STARTER	1	1	
E15-3	19352-Z010110-0000	叶轮	IMPELLER	1	1	
E15-4	13510-Z050210-0000	飞轮组合	FLYWHEEL COMP	1	1	
E15-5	90001-0625-01	六角法兰面螺栓-小系列	BOLT	2	1	

E15-6	30400-Z330110-0000	点火线圈	COIL, IGNITION	1	1	
E15-7	90001-0625-01	六角法兰面螺栓-小系列	BOLT	2	1	
E15-8	30423-Z050310-0000	点火线圈熄火线	CORD, STOP SWITCH	1	1	
E15-9	30140-Z050210-0000	充电线圈组合	STATOR ASSY, MAGNETO	1	1	

FIG. 15 CONTROL ASSY, THROTTLE 油门操纵部件 (E13)

图15: 油门操纵部件 (E13)



REF.NO.	新物料代码	DESCRIPTION	名称	Q'TY数量	包装数	价格
E13-1	16520-Z330110-0000	油门操纵部件	CONTROL ASSY	1	1	
E13-2	16063-Z050110-0000	调速弹簧	SPRING, GOVERNOR	1	1	
E13-3	16062-Z010110-0000	调速拉杆	ROD, GOVERNOR	1	1	
E13-4	16012-Z010110-0000	节气门复位弹簧	SPRING, THROTTLE RETURN	1	1	
E13-5	16070-Z010110-0000	调速支架组合	BRACKET COMP, GOVERNOR	1	1	
E13-6	90001-0610-01	六角法兰面螺栓-小系列	BOLT	2	1	

E13-7	90103-0525-52	十字槽盘头螺钉	SCREW	1	0	
E13-8	16527-Z010110-0000	限位调节弹簧	SPRING, CONTROL ADJUSTING	1	0	
E13-9	16523-Z010110-0000	油门手柄复位簧	SPRING, HANDLE RETURN	1	0	
E13-10	16521-Z050110-0000	油门手柄	HANDLE, THROTTLE	1	0	
E13-11	16525-Z010110-0000	油门手柄压紧垫圈	GASKET, THROTTLE HANDLE	1	0	
E13-12	16524-Z010110-0000	油门手柄衬垫	WASHER, THROTTLE HANDLE	1	0	
E13-13	16526-Z010110-0000	油门手柄压块	BLOCK, THROTTLE HANDLE	1	0	
E13-14	90309-0600-31	1型全金属六角锁紧螺母	NUT	1	0	
E13-15	16072-Z010110-0000	调速支架固定螺栓	BOLT, GOVERNOR BRACKET	1	0	
E13-16	90305-0600-31	六角法兰面螺母	NUT	1	0	
E13-17	16015-Z050110-0000	油门手柄胶套	SLEEV, THROTTLE HANDLE RUBBER	1	0	
E13-18	16560-Z330110-0000	油门操纵部件底板组合	PLATE SUASSEMBLY, THROTTLE CONTROL BOTTOM	1	0	