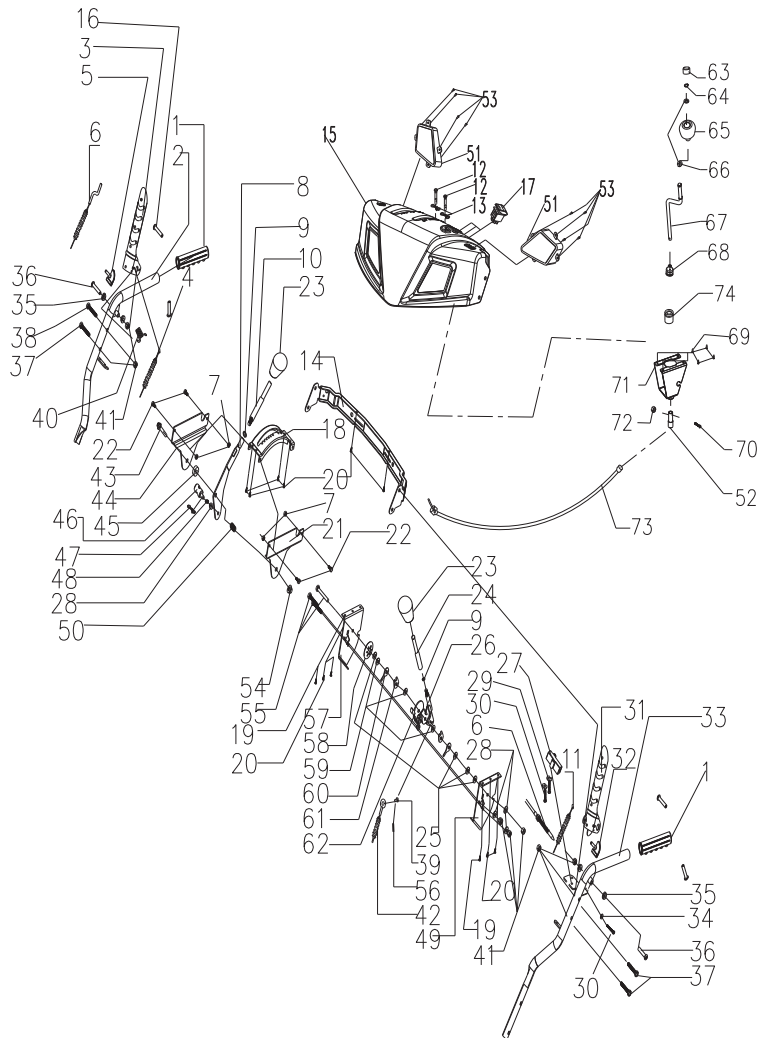


23528

RET



N	ART	Name	QTY	comment
1	SX-11-008	heated hanld cover	2	
2	NF-002-R-B	right upper handle welded part	1	
3	2011-SX-11-031-2	right handle	1	
4	SX-11-36B-3	walking cable	1	
5	SJ-047-1	SJ rubber cap	1	
6	11-SX-11-36K	self-lock cable	2	
7	NHLN-6	nonmetal outer hexagon locknut	4	M6
8	NF-001-8	Slot plate welding assembly	1	
9	SW-8	spring washer	1	φ 8
10	2015-002	handle connector 1	1	
11	SX-11-036B-2	auger cable	1	
12	NJ-01	output shaft bolt	2	
13	NJ-02	pin	2	
14	NF-001-5	panel under coaming	1	

15	on request to the supplier	panel	1	
16	BE-4*12	blind rivets	4	φ 4*12
17	switch	switch	3	
18	2015-001	gear seat	1	
19	SHSS-4*10	cross flat head tapping screw	2	
20	SHSS-4. 8*12	cross pan head tapping screws	10	M4. 8X12
21	NF-001-4-01	Gear fixed frame 1	1	
22	HS-6*12	Hexagonal screw	4	M6X12
23	ZZSPVCS18033	handle ball	2	
24	2015-003	handle connector 2	1	
25	FB-8*22*2	plate	4	φ 8×22×2
26	SJ-209	adjust rod weled assy	1	
27	2012-KEY-04	Self locking fixing seat	1	
28	FB-8*16*1. 2	plate	4	φ 8×16×1. 2
29	SW-6	spring washer	2	φ 6
30	HS-6*18	Hexagonal screw	3	φ 6*18
31	2011-SX-11-031-4	handle left welded	1	
32	SJ-047-1	SJ rubber cap	1	
33	NF-002-L-B	left upper handle welded part	1	
34	FB-6*12*0. 7	plate	1	φ 6* φ 12*0. 7
35	SJ-046-1	small tensioning plate convex gasket	4	
36	HS-8*55	Hexagonal screw	2	
37	HFB-8*40	Outer hexagon flange screws	3	M8X40
38	HFB-8*40	Outer hexagon flange screws	1	M8X40
39	SJ-233	cable pin	1	
40	NF-001-14-3	clutch hanld spring3	1	
41	NHLN-8	nonmetal outer hexagon locknut	7	M8
42	SX-11-36E	chute cable	1	
43	HS-10*45	Hexagonal screw	1	M10X45
44	NF-001-4-02	Gear fixed frame 2	1	
45	FB-10*28*3	plate	1	φ 10* φ 28*3
46	GPP6562C-01-07	adjust handle upper connector	1	
47	NJ-02	pin	1	
48	GPP6562C-01-09	Speed adjustment gap spring 1	1	
49	NF-001-7	left chute gear fixed frame	1	
50	STG11 (13) 70 (10) AE-02-02-08	Handle adjusting spring2.5	1	
51	13. 1. 07. 01. 005	left lamp	1	
52	2015-004	soft shaft sleeve	1	
53	CHSS-4. 2*12	cross pan head tapping screws	4	STø4. 2X20
54	NHLN-10	nonmetal outer hexagon locknut	1	M10
55	HS-8*45	Hexagonal screw	3	M8X45
56	OSP-2. 0*29	cotter pin 2	1	2. 0*29
57	NF-001-7-01	right chute gear fixed frame	1	
58	SJ-223	Bowl shrapnel	1	
59	SA-008	Curved elastic gasket	3	8
60	SJ-224	Calabash card	2	
61	SJ-215	U card	2	
62	SJ-210-1	Adjust damping mounting plate 1	1	
63	SL-8-03	chute rotary handle ball cap	1	PU
64	10. 07. 06. 1. 114	bearing holder		
65	SL-8-11	chute rotary handle ball	1	PP
66	FB-10*20*1	plate	2	ø10*ø20*1
67	ZY-051	adjust rod	1	
68	STG1330-091	new rubber cover	只	1

69	SH-4.2*16	cross pan head tapping screws	4	STø4.2*16
70	HS-4*20	Hexagonal screw	1	M4*20
71	2015-01	adjust rod seat assy	1	
72	NHLN-4	nonmetal outer hexagon locknut	1	M4
73	2015-011	1005 soft shaft	1	
74	STG8027BS-035	adjust rod damping sleeve	1	