

PARTS LIST

ROBIN ENGINE

EH12-2D/P

FOR MIKASA PRODUCTS

805-05603

FOR MODEL

**MT-74FA/MT-84FA
MTX-80/90
MTX-75/85
TAMPING RAMMER**

SPEC. No. EH122D46420 :MT-74FA/MT-84FA (FOR MQ)

SPEC. No. EH122D46530 :MTX-80/MTX-90 (FOR MQ)

SPEC. No. EH122D46530 :MTX-75/80, MTX-85/90 (FOR EXPORT)

MIKASA SANGYO CO. , LTD.

PARTS REMARK INDEX

How to read the marks and remarks used in this parts book.

Section 1 : Explanation of Code Use In “MRK” Column

OO : Interchangeable between the new part and the old one.

XX : Not Interchangeable between new and old.

OX : New part is usable for the old machine but the old part is not usable for the new machine.

XO : The old part is usable for the new machine but the new part is not usable for the old machine.

Note : In case of the lack of interchangeability between the new part and old part, a new part may be used by replacing all other parts found in the assembly. In this case, refer to section 2 for instruction on identifying other parts involved in a new assembly.

AD : Newly established(added)

DC : Suspended(discontinued)

NC : Part number changed

QC : Quantity used has been changed

NS : Not supplied individually but supplied in an assembly or a group.

AS : Special part designed to allow interchangeability between new and old part.

CR : Correction

Section 2 : Items Found In “Remark” Column

Serial Numbers - Where indicated, this indicates a serial number range (inclusive) where a particular part is used.

Model Number - Where indicated, this shows that the corresponding part is utilized only with this specific model number or model number variant.

or * : All parts with the same number following # or * belong to the same assembly. this part cannot be interchanged individually with any other assemblies to replace an old part (indicated by #), with a new part(indicated by *), then all other parts of that assembly must be replaced with new ones.

Note : If more than one of the same reference number is listed, the last one listed indicates newest(or latest)part available.

Section 3: Example

REF NO.	PART NO.	PART NAME	QTY	MRK	REMARKS
457(1)	5122-09230	Hinge Metal, Upper/24g	1		-1070 #3 (5)
457(2)	5072-09420	Hinge Metal, Upper M16	1	OX(3)	U1071-(6) * 3(7)

(1) Old part

(2) New part

(3) New part usable with old machine, but old part not usable with new machine (reference section 1).

(4) Old part number is used through this machine serial number.

(5) Old part, used in an assembly with other parts marked with #3. To use this part on a new machine, all other parts in this assembly must be replaced with old ones.

(6) New part put into use starting with this serial number and is still current.

(7) New part used in an assembly with other parts marked * 3, to use this part as a replacement for an old part, all other * 3 marked parts must be changed at the same time.

Section 4: Items Found In “MK2” Column

(only for suspended products)

! OO (“OO” is shown in figure) : The part shown in lower line is supplied.

! SD : Not available due to termination of production.

! NS : Not supplied individually, but supplied in an assembly or a group.

! PD : Supplied as unit product.

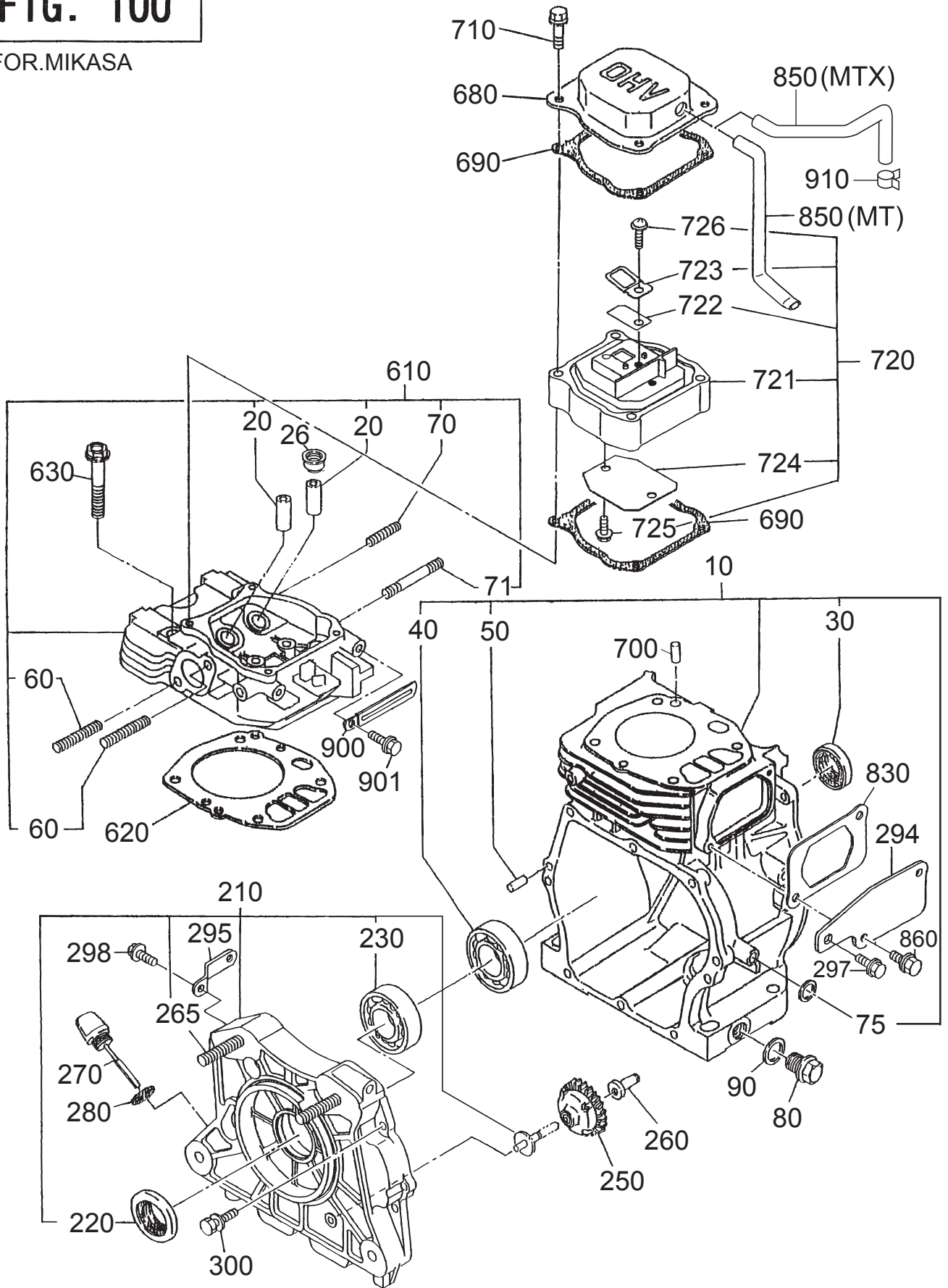
SS : Not available after stock run out.

(The contents of this parts catalog are subject to change without notice.)

1. CRANK CASE

FIG. 100

FOR.MIKASA



Use liquid gasket for cylinder and insulator gasket(Rammer only).

1. CRANK CASE

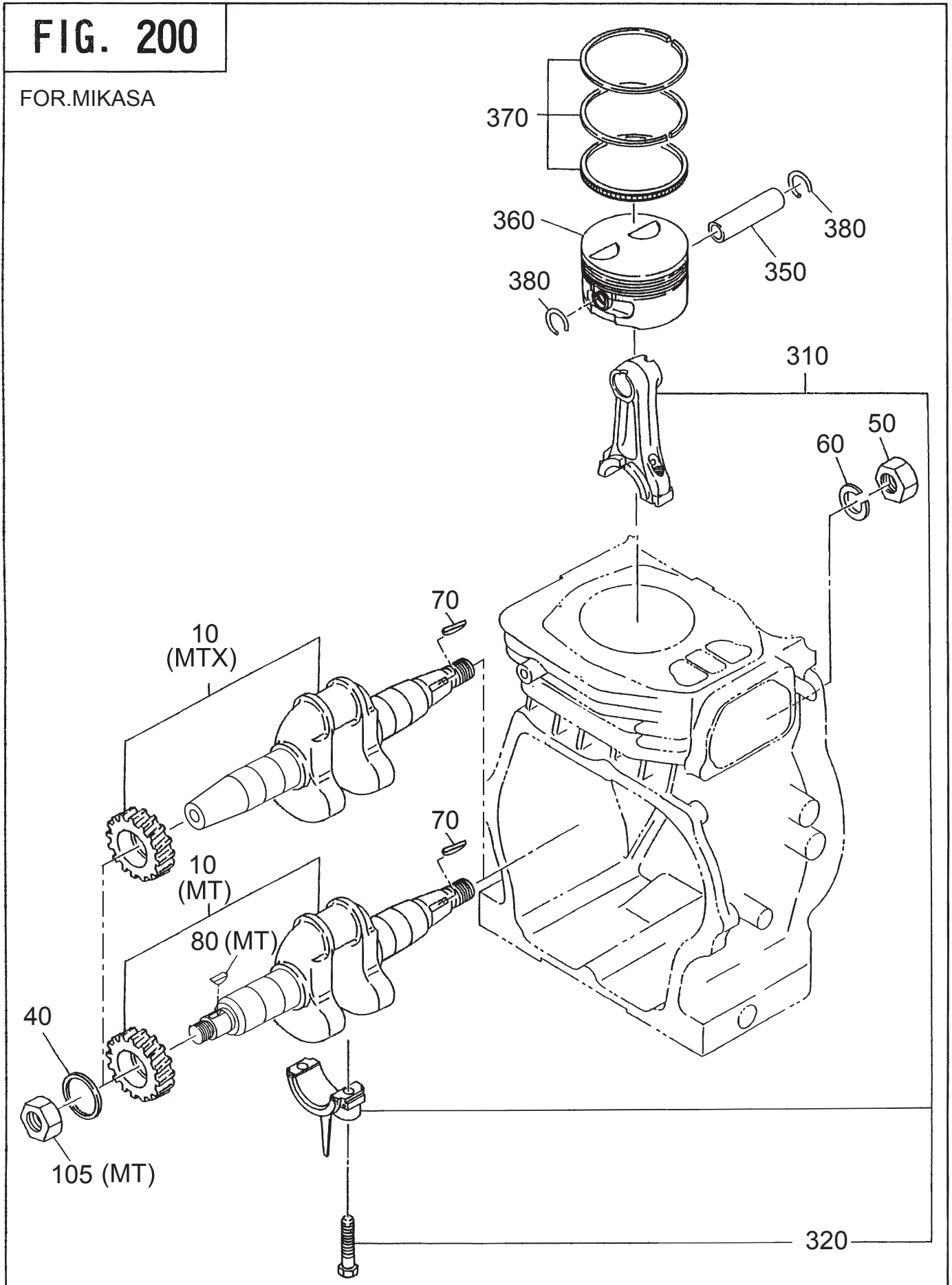
** AMA

**

REF NO.	PART NO.	PART NAME	Q' TY	MRK	MK2	REMARKS
10	252-10301-31	CRANK CASE CP	1		!252-10301-41	MT
10	252-10301-41	CRANK CASE CP/EH12-2, MTX	1			MTX
20	237-14202-03	VALVE GUIDE O/S	2			
26	277-16010-01	STEM SEAL	1			
30	044-02501-50	OIL SEAL	1			
40	060-02501-00	BALL BEARING	1			
50	031-00600-20	DOWEL PIN	2			
60	010-50804-80	STUD	2			
70	010-50601-31	STUD	1			
71	001-39066-00	STUD	1			
75	044-00800-10	OIL SEAL VC 8X14X4	1			
80	040-11400-30	PLUG	2			
90	021-11400-20	GASKET	2			
210	252-11101-21	MAIN BEARING COVER CP	1			MT
210	252-11103-01	MAIN BEARING COVER CP/MTX	1			MTX
220	044-02501-60	OIL SEAL	1			
230	060-02500-10	BALL BEARING 6205C3	1			
250	227-45003-01	GOVERNOR GEAR COMPL	1			
260	205-41901-03	GOVERNOR SLEEVE	1			
265	010-81000-20	STUD	2			MT
265	010-81000-30	STUD	2			MTX
270	268-63603-01	OIL GAUGE CP/EH12-2D	1			
280	X21-31600-20	GASKET	1			
294	252-17002-01	BRACKET CP(M. B. C)	1			
295	252-17001-01	SUPPORT(M. B. C)	1			
297	001-13081-60	BOLT AND WASHER ASS'Y	1			
298	001-13081-60	BOLT AND WASHER ASS'Y	2			
300	013-00602-00	BOLT & WASHER AY	8			
610	268-13101-21	CYLINDER HEAD CP/EH12	1			
620	253-15001-33	GASKET, HEAD/EH12-2D	1			
630	011-00801-00	FLANGE BOLT	4			
680	252-15502-03	ROCKER COVER	1			
690	269-16004-03	GASKET, ROCKER, COVER	2			
700	031-00600-20	DOWEL PIN	2			
710	011-00601-70	FLANGE BOLT EY45V	4			
720	252-15601-20	SPACER, AY, BREATHER	1			
721	252-15601-13	SPACER, BREATHER/EH12-2D	1			
722	252-16001-03	LEAF VALVE	1			
723	252-16101-03	RETAINER PLATE	1			
724	252-14401-23	PLATE/EH12-2D	1			
725	011-00601-50	FLANGE BOLT EH11	2			
726	004-35061-20	SCREW & WASHER	1			
830	268-16201-03	GASKET, BREATHER COVER	1			
850	252-18002-03	RUBBER PIPE	1			MT
850	268-18005-03	RUBBER PIPE	1			MTX
860	001-13061-60	BOLT AND WASHER AY	2			
900	056-60002-50	CLAMP	1			
901	011-00600-20	FLANGE BOLT	1			
910	056-11200-40	HOSE CLAMP	1			MTX

FIG. 200

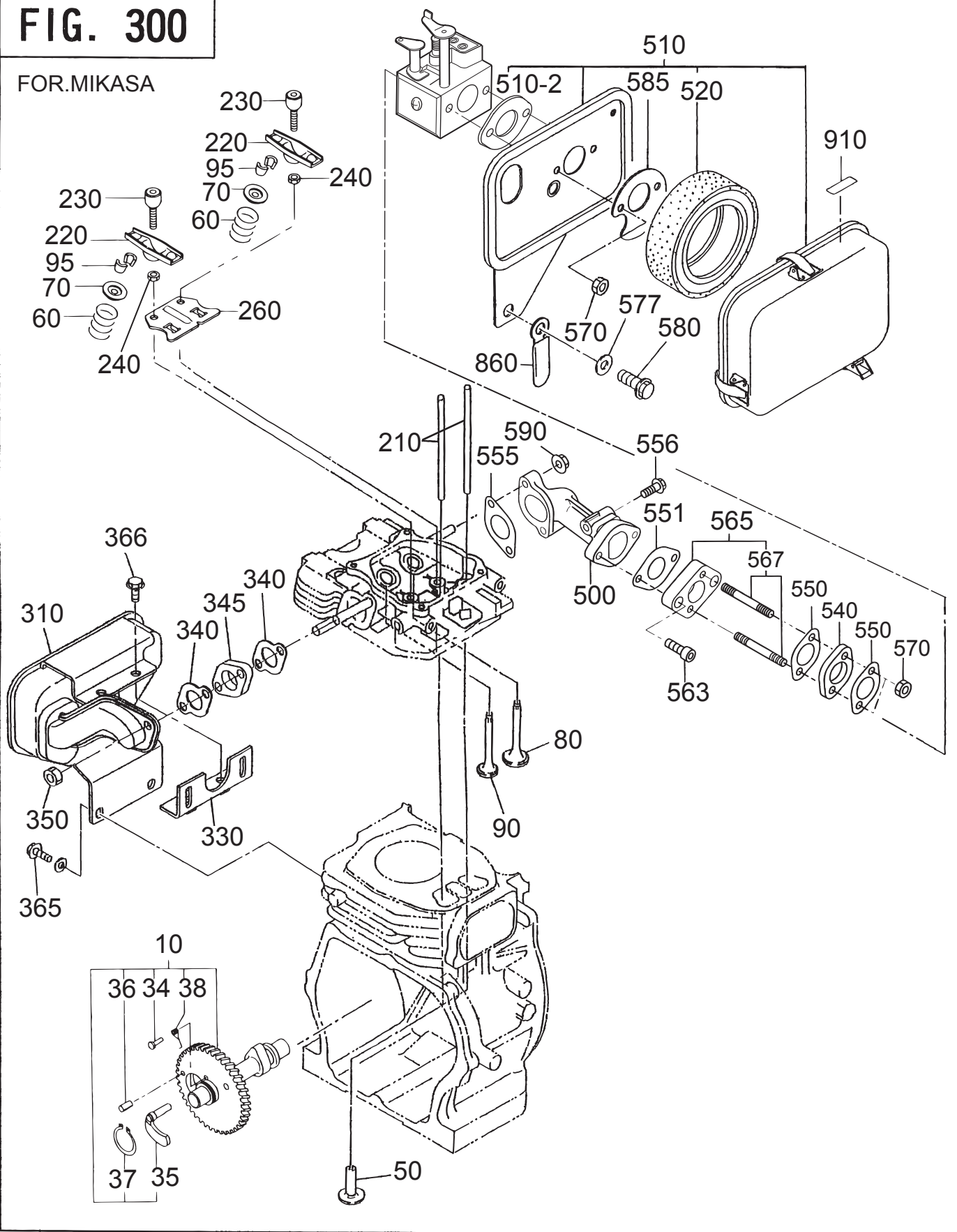
FOR.MIKASA



3-1. INTAKE,EXHAUST

FIG. 300

FOR.MIKASA



EH12-2D(for MT-74FA/84FA)

2010/3/31

3-1. INTAKE EXHAUST

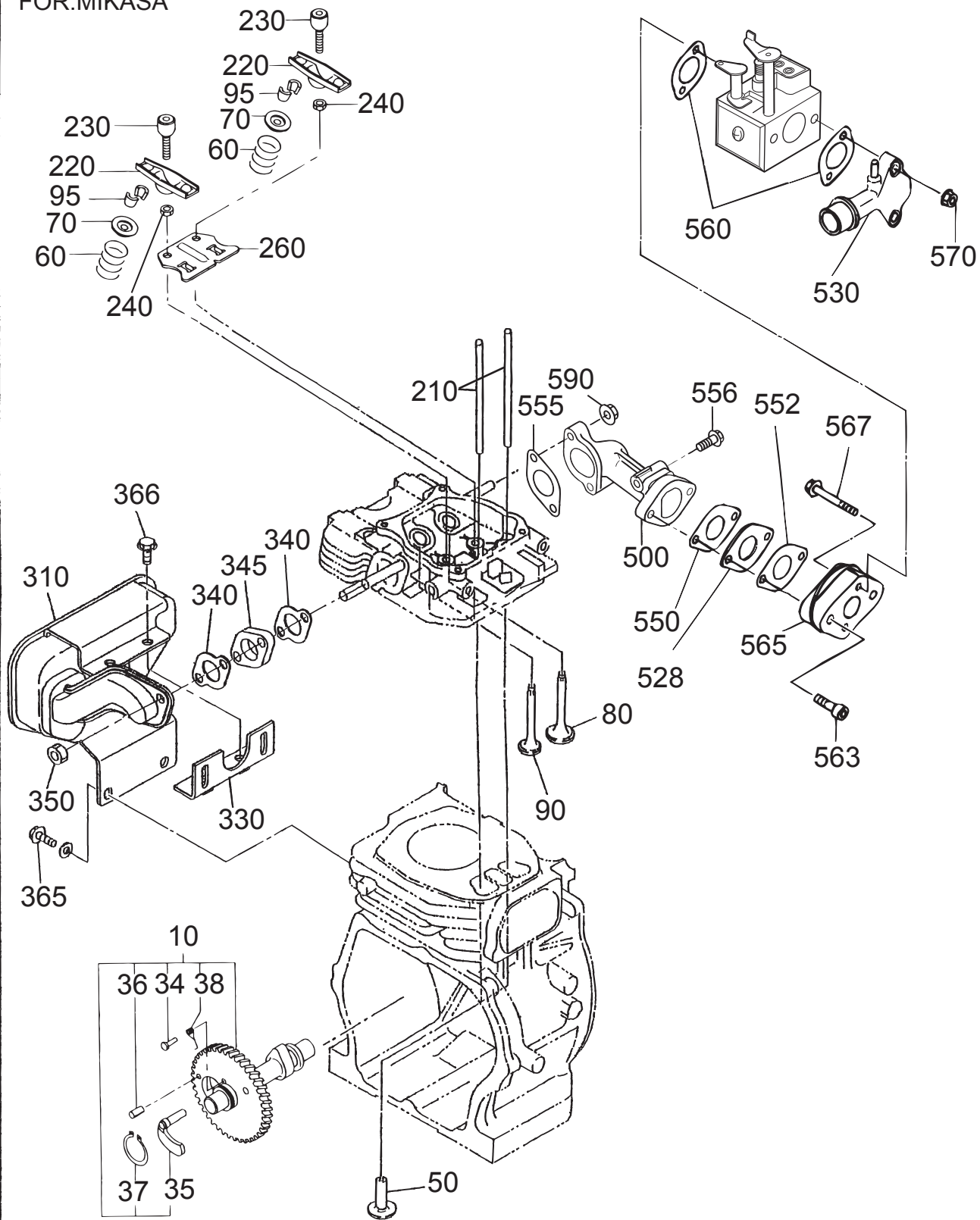
** AMC **

REF NO.	PART NO.	PART NAME	Q' TY	MRK	MK2	REMARKS
10	253-31701-11	CAMSHAFT CP	1			
34	227-38601-23	PIN (SPRING)	1			
35	227-36401-13	RELEASE LEVER/EH12-2D	1			
36	005-19041-00	SPRING PIN	1			
37	003-15220-00	SNAP RING	1			
38	227-38701-03	RETURN SPRING/EH12-2D	1			
50	239-33301-13	TAPPET	2			
60	253-33601-03	VALVE SPRING	2			
70	269-33701-03	SPRING RETAINER	2			
80	268-33401-03	INTAKE VALVE	1			
90	268-33501-03	EXHAUST VALVE	1			
95	132-10KA0-31	COLLET VALVE	4			
210	268-35301-03	PUSH ROD	2			
220	269-36002-23	ROCKER ARM/EH12, 17, 25	2			
230	269-35801-03	BOLT, PIVOT	2			
240	017-00600-90	NUT EH150	2			
260	269-36501-03	GUIDE PLATE	1			
310	252-30401-11	MUFFLER CP/EH12/MT-72	1			
330	252-37001-11	BRACKET CP	1			
340	253-35201-03	GASKET, MUFFLER	2			
345	252-36501-23	SPACER, EXHAUST/MT-72SGK	1			
350	017-60800-20	SELF LOCK NUT	2			
365	001-13081-60	BOLT AND WASHER ASS'Y	2			
366	001-14081-60	BOLT&WASHER 8X16/MT-72SGK	2			
500	268-33004-13	INTAKE PIPE/EH12-2D	1			
510	268-32715-00	AIR CLEANER AY/EH12-2D	1			
510 -2	106-32723-08	PACKING	1			
520	252-32602-07	ELEMENT, SET MT-72FW	1			
540	252-32901-03	INSULATOR/EH12-2D	1			
550	106-65002-03	GASKET (CARB.)	2			
551	236-35903-03	GASKET INSULATOR	1			
555	282-35901-03	GASKET, INSULATOR	1			
556	001-14064-00	BOLT AND WASHER AY	1			
563	011-90600-20	BOLT (SOCKET HEAD)	2			
565	252-33102-21	INTAKE FLANGE/EH12-2D	1			
567	010-50500-60	STUD/EH12-2D	2			
570	017-60500-10	SELF LOCK NUT	2			
577	020-00800-80	WASHER	1			
580	001-13081-80	BOLT AND WASHER ASSY	1			
585	268-36503-03	PLATE AIR CLEANER/EH12-2D	1			
590	002-38060-00	FLANGE NUT	2			
860	056-60002-50	CLAMP	1			
910	073-20050-20	LABEL CHOKE	1			

3-2. INTAKE,EXHAUST

FIG. 300

FOR.MIKASA



EH12-2D(for MTX-80/90,75/85)

2010/3/31

3-2. INTAKE EXHAUST

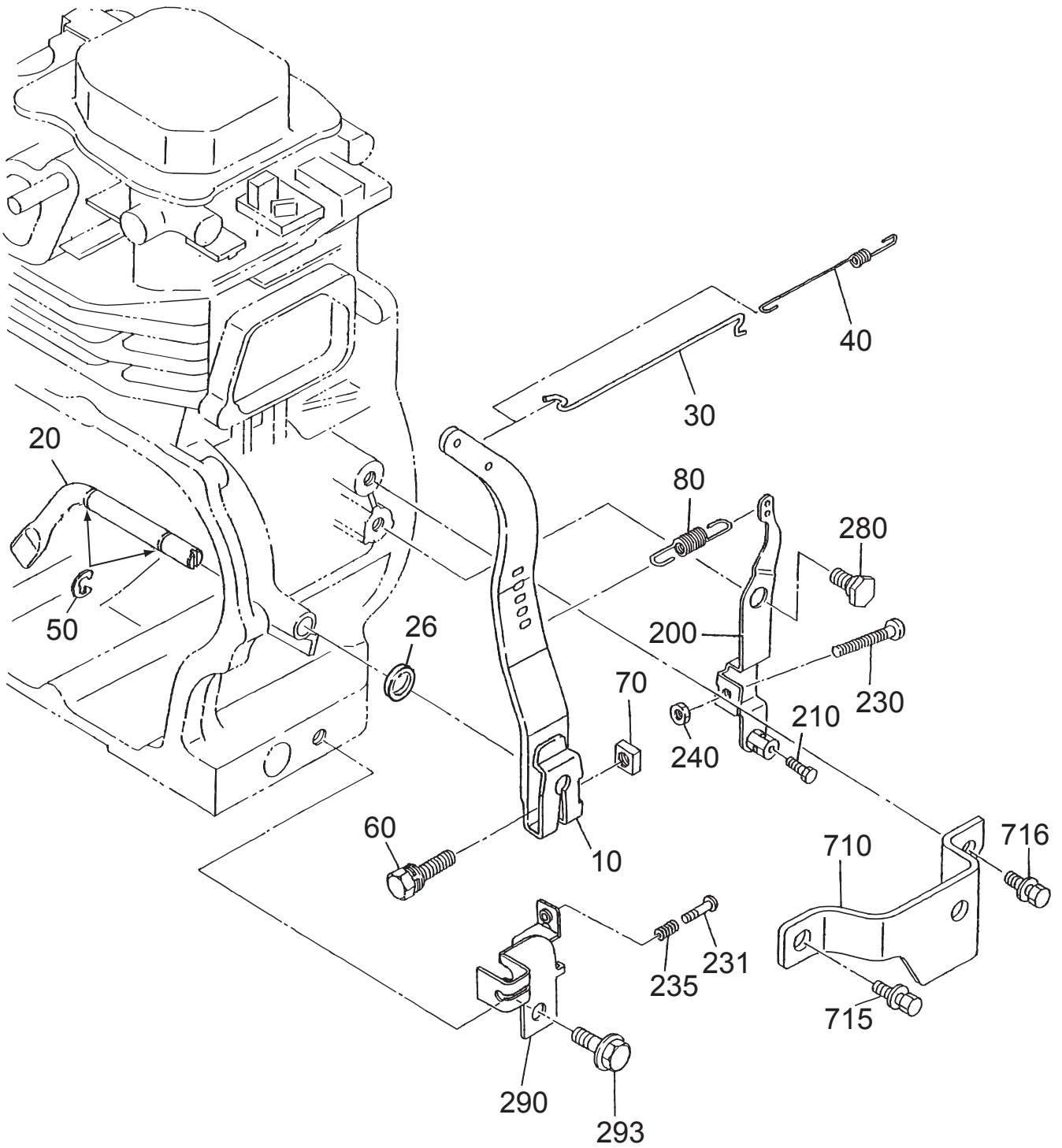
**** AWV ****

REF NO.	PART NO.	PART NAME	Q' TY	MRK	MK2	REMARKS
10	253-31701-11	CAMSHAFT CP	1			
34	227-38601-23	PIN (SPRING)	1			
35	227-36401-13	RELEASE LEVER/EH12-2D	1			
36	005-19041-00	SPRING PIN	1			
37	003-15220-00	SNAP RING	1			
38	227-38701-03	RETURN SPRING/EH12-2D	1			
50	239-33301-13	TAPPET	2			
60	253-33601-03	VALVE SPRING	2			
70	269-33701-03	SPRING RETAINER	2			
80	268-33401-03	INTAKE VALVE	1			
90	268-33501-03	EXHAUST VALVE	1			
95	132-10KA0-31	COLLET VALVE	4			
210	268-35301-03	PUSH ROD	2			
220	269-36002-23	ROCKER ARM/EH12, 17, 25	2			
230	269-35801-03	BOLT, PIVOT	2			
240	017-00600-90	NUT EH150	2			
260	269-36501-03	GUIDE PLATE	1			
310	252-30401-11	MUFFLER CP/EH12/MT-72	1			
330	252-37001-11	BRACKET CP	1			
340	253-35201-03	GASKET, MUFFLER	2			
345	252-36501-23	SPACER, EXHAUST/MT-72SGK	1			
350	017-60800-20	SELF LOCK NUT	2			
365	001-13081-60	BOLT AND WASHER ASS'Y	2			
366	001-14081-60	BOLT&WASHER 8X16/MT-72SGK	2			
500	268-33004-13	INTAKE PIPE/EH12-2D	1			
528	268-36601-03	PLATE/EH12-2/MTX	1			
530	284-38101-03	INTAKE PIPE	1			
550	157-35001-03	GASKET, INSULATOR	1			
552	284-36501-03	GASKET (INTAKE)	1			
555	282-35901-03	GASKET, INSULATOR	1			
556	001-14064-00	BOLT AND WASHER AY	1			
560	106-65002-03	GASKET (CARB.)	2			
563	011-90600-90	BOLT (SOCKET HEAD)	2			
565	284-33101-03	INTAKE FLANGE CP	1			
567	010-00501-10	BOLT M5X0.8X70L	2			
570	017-60500-10	SELF LOCK NUT	2			
590	002-38060-00	FLANGE NUT	2			

4. GOVERNOR, OPERATE

FIG. 420

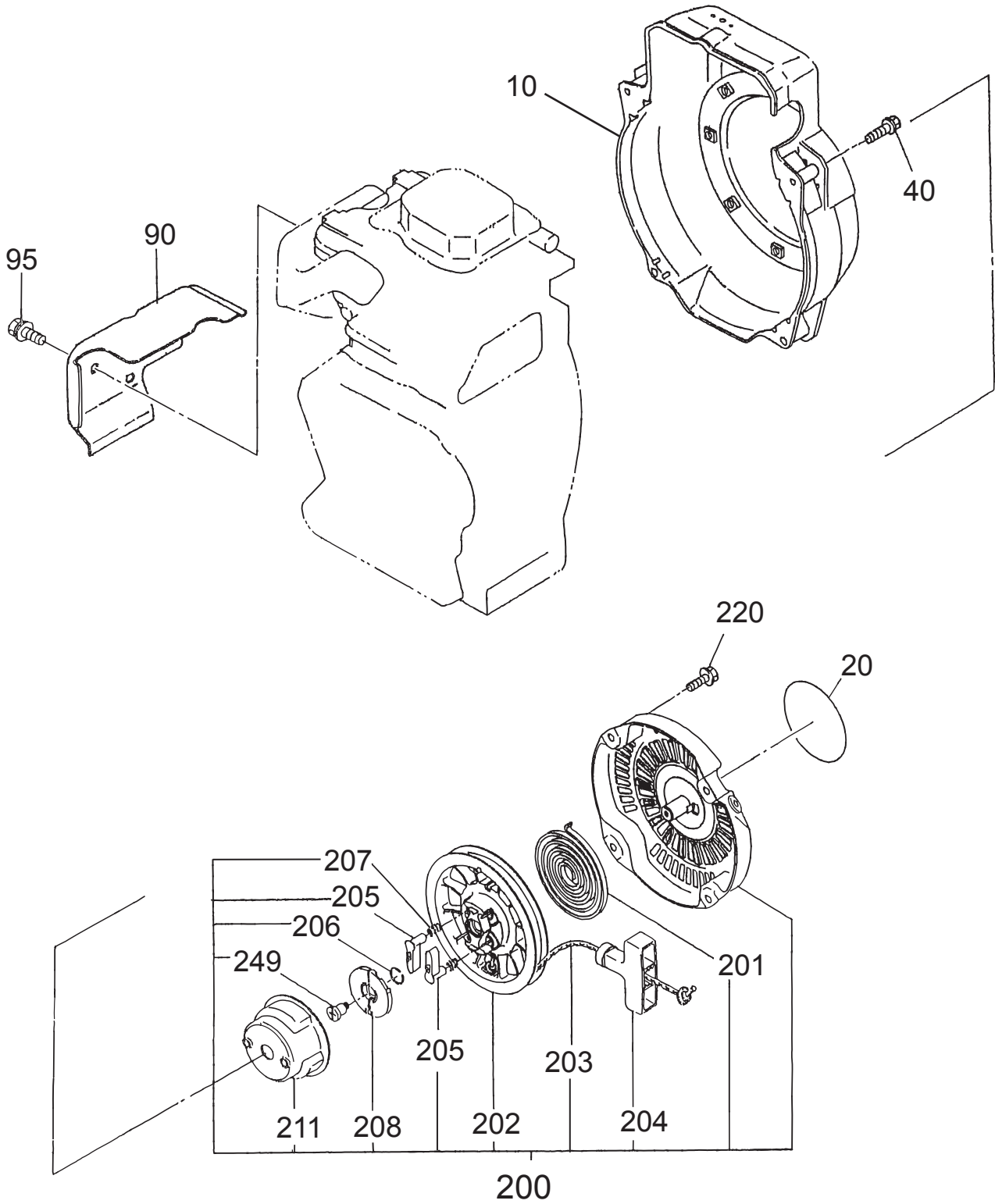
FOR.MIKASA



5. COOLING,STARTING

FIG. 500

FOR.MIKASA

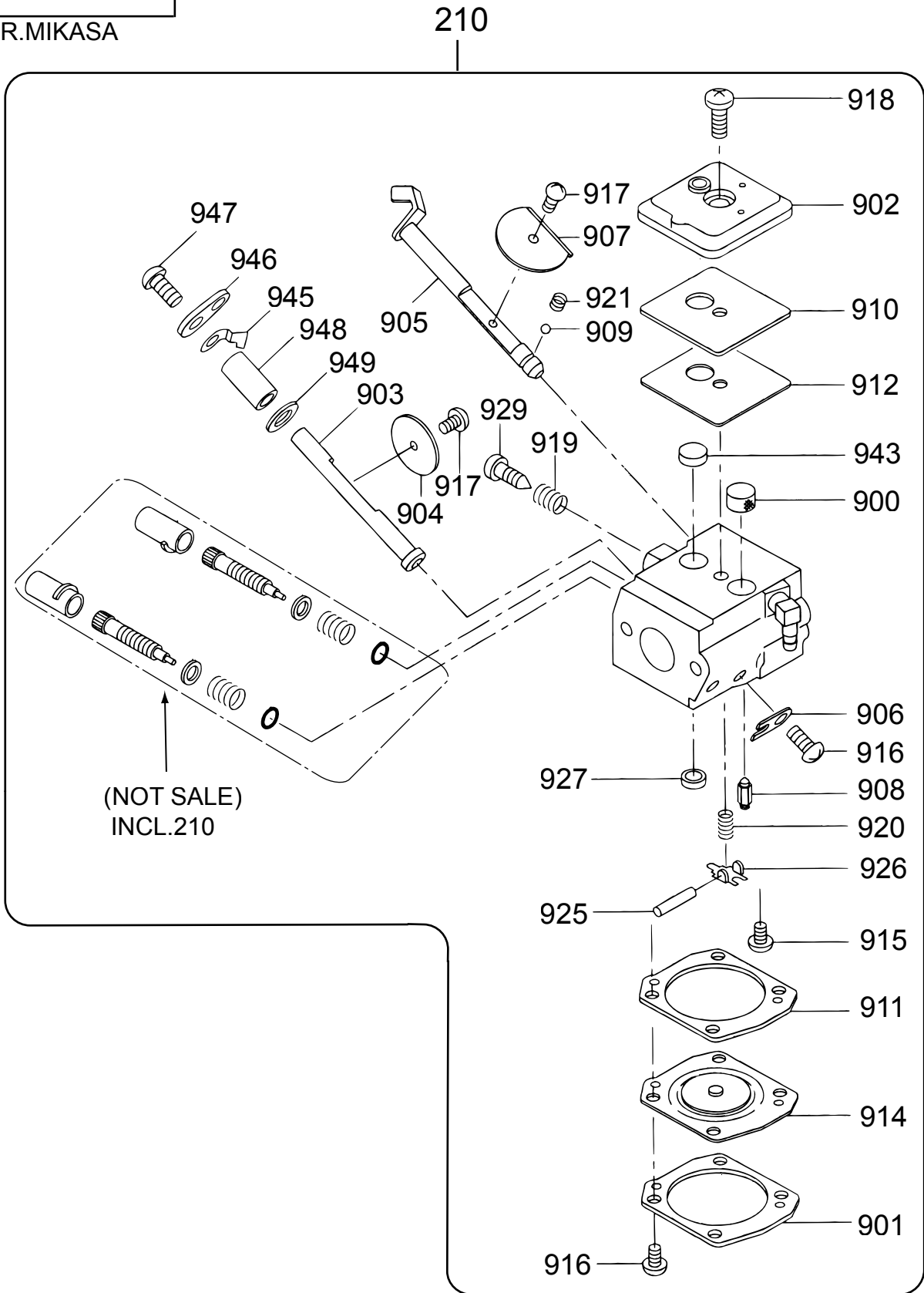


6-1. CARBURETOR AY / キャブレーター A Y

FIG.608a

EH122D46420(MT-74FA/84FA)

FOR.MIKASA



EH12-2D(for MT-74FA/84FA)

2010/3/31

6-1. CARBURETOR AY

**** AMF ****

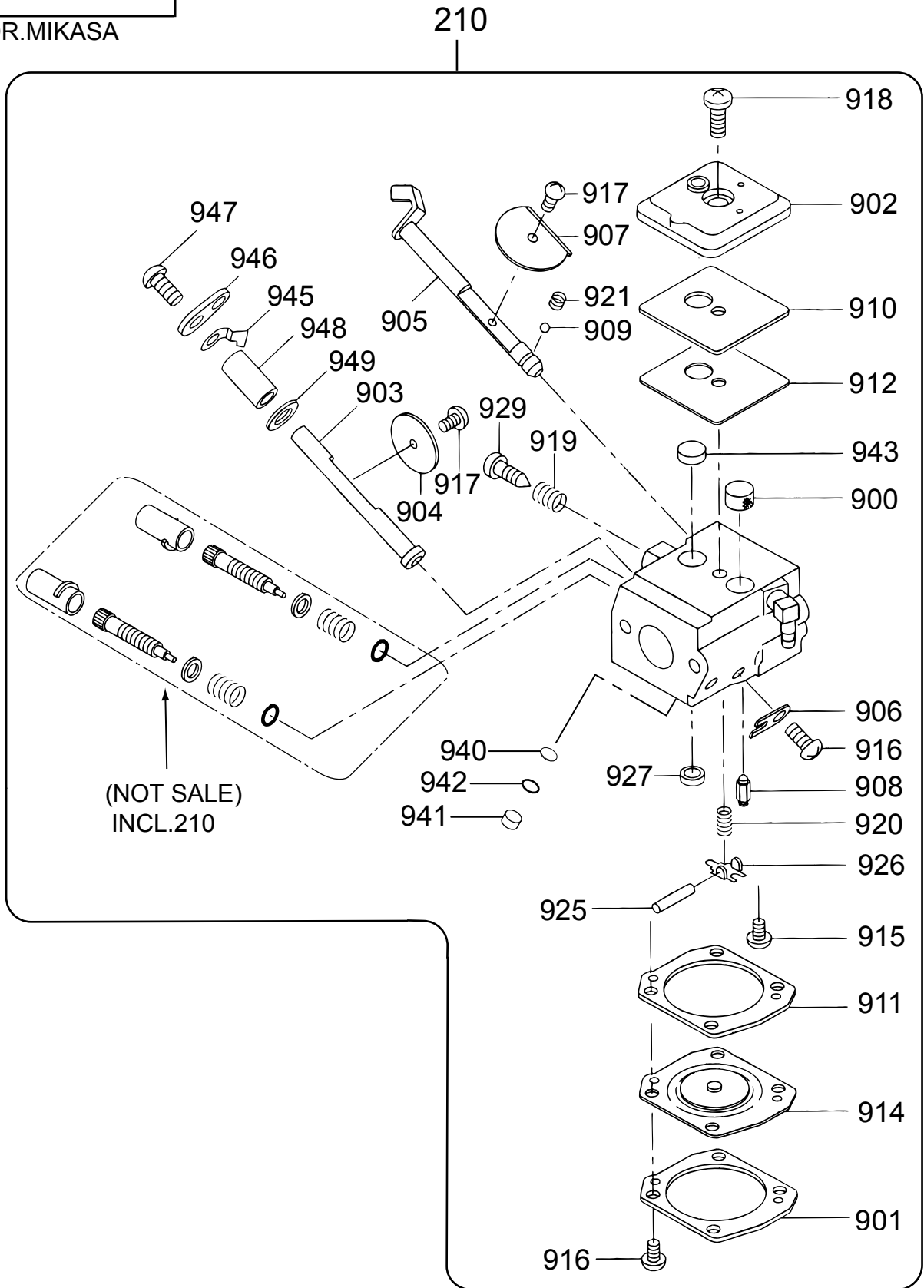
REF NO.	PART NO.	PART NAME	Q' TY	MRK	MK2	REMARKS
210	252-62570-00	CARBURETOR AY/EH12-2D	1			MT
900	501-60040-10	SCREEN INLET	1			
901	252-62605-08	COVER, METALIING DIAPHRAGM	1			
902	252-62604-08	COVER PUMP/EH12-2D	1			
903	252-62612-08	THROTTLE SHAFT/EH12-2D	1			
904	161-62335-08	VALVE THROTTLE/EH12-2D	1			
905	284-62603-08	SHAFT AY CHOKE/EH12-2D	1			
906	510-60450-40	CLIP	1			
907	284-62604-08	VALVE, CHOKE/EH12-2D	1			
908	161-62552-08	VALVE, INLET NEEDLE/EH12-2	1			
909	147-62584-08	BALL /EH12-2D	1			
910	161-62380-08	GASKET PLUG/EH12-2D	1			
911	161-62381-08	GASKET, METALIINGDIAPHRAGM	1			
912	252-62610-08	DIAPHRAGM PUMP/EH12-2D	1			
914	161-62383-08	DIAPHRAGM AY , METALIING	1			
915	106-62575-08	SCREW	1			
916	106-62576-08	SCREW AY	5			
917	147-62573-08	SCREW	2			
918	284-62600-08	SCREW /EH12-2D	1			
919	161-62454-08	SPRING, IDLE ADJUST	1			
920	161-62451-08	SPRING, METALIING LEVER	1			
921	147-62583-08	SPRING, CHOKE/EH12-2D	1			
925	161-62368-08	PIN, METALIING LEVER	1			
926	161-62369-08	LEVER, METALIING/EH12-2D	1			
927	147-62575-08	PLUG	1			
929	161-62385-08	SCREW, IDLE ADJUST/EH12-2D	1			
943	252-62611-08	SPRING PUMP/EH12-2D	1			
945	161-62551-08	STOPPER, THROTTLE	1			
946	252-62603-08	LEVER, THROTTLE/EH12-2D	1			
947	161-62553-08	SCREW VALVE/EH12-2D	2			
948	252-62602-08	SPACER, THROTTLE LEVER	1			
949	252-62601-08	WASHER /EH12-2D	1			

6-2. CARBURETOR AY / キャブレーター A Y

FIG.608b

EH122D46530(MTX80/90,75/85)

FOR.MIKASA



EH12-2D(for MTX-80/90,75/85)

2010/3/31

6-2. CARBURETOR AY

** BAI **

REF NO.	PART NO.	PART NAME	Q' TY	MRK	MK2	REMARKS
210	252-62571-00	CARBURETOR AY/EH12-2/MTX	1			MTX
900	501-60040-10	SCREEN INLET	1			
901	252-62605-08	COVER, METALIING DIAPHRAGM	1			
902	252-62604-08	COVER PUMP/EH12-2D	1			
903	252-62612-08	THROTTLE SHAFT/EH12-2D	1			
904	161-62335-08	VALVE THROTTLE/EH12-2D	1			
905	284-62603-08	SHAFT AY CHOKE/EH12-2D	1			
906	510-60450-40	CLIP	1			
907	284-62604-08	VALVE, CHOKE/EH12-2D	1			
908	161-62552-08	VALVE, INLET NEEDLE/EH12-2	1			
909	147-62584-08	BALL /EH12-2D	1			
910	161-62380-08	GASKET PLUG/EH12-2D	1			
911	161-62381-08	GASKET, METALIINGDIAPHRAGM	1			
912	252-62610-08	DIAPHRAGM PUMP/EH12-2D	1			
914	161-62383-08	DIAPHRAGM AY , METALIING	1			
915	106-62575-08	SCREW	1			
916	106-62576-08	SCREW AY	5			
917	147-62573-08	SCREW	2			
918	284-62600-08	SCREW /EH12-2D	1			
919	161-62454-08	SPRING, IDLE ADJUST	1			
920	161-62451-08	SPRING, METALIING LEVER	1			
921	147-62583-08	SPRING, CHOKE/EH12-2D	1			
925	161-62368-08	PIN, METALIING LEVER	1			
926	161-62369-08	LEVER, METALIING/EH12-2D	1			
927	147-62575-08	PLUG	1			
929	161-62385-08	SCREW, IDLE ADJUST/EH12-2D	1			
940	147-62589-08	SCREEN CHECK VALVE	1			
941	147-62587-08	PLUG CUP	1			
942	147-62588-08	RING	1			
943	252-62611-08	SPRING PUMP/EH12-2D	1			
945	161-62551-08	STOPPER, THROTTLE	1			
946	252-62603-08	LEVER, THROTTLE/EH12-2D	1			
947	161-62553-08	SCREW VALVE/EH12-2D	2			
948	252-62602-08	SPACER, THROTTLE LEVER	1			
949	252-62601-08	WASHER /EH12-2D	1			

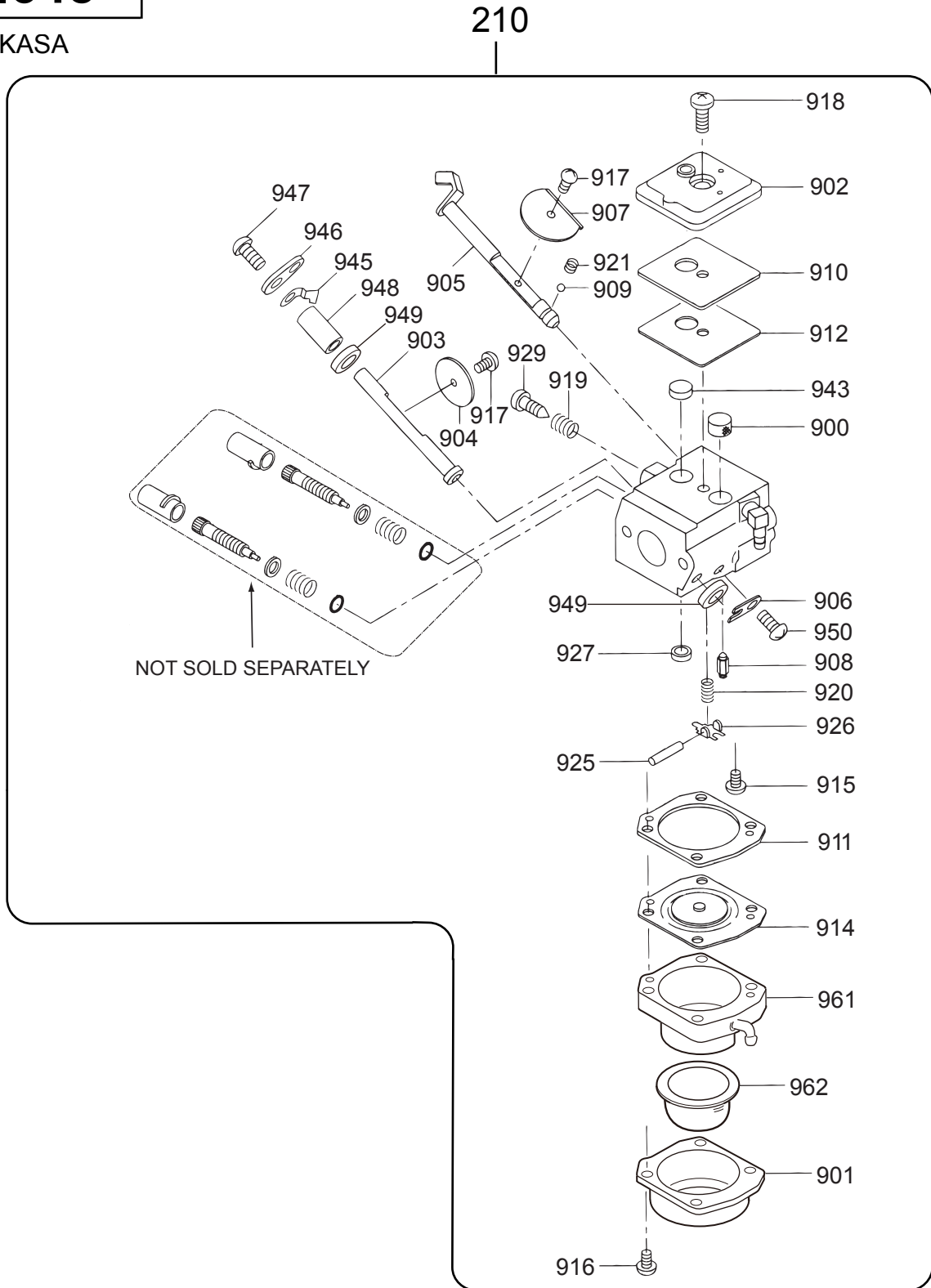
EH12-2D (FOR MTX-80 / 90, MTX-75 / 85)
6-3. CARBURETOR AY / キャブレーター A Y
(NEW) W / PUMP, PRIMER プライマポンプ付き

BK10

FIG.645

EH122D46530(MTX80/90,75/85)

FOR.MIKASA



EH12-2D(for MTX-80/90,75/85)

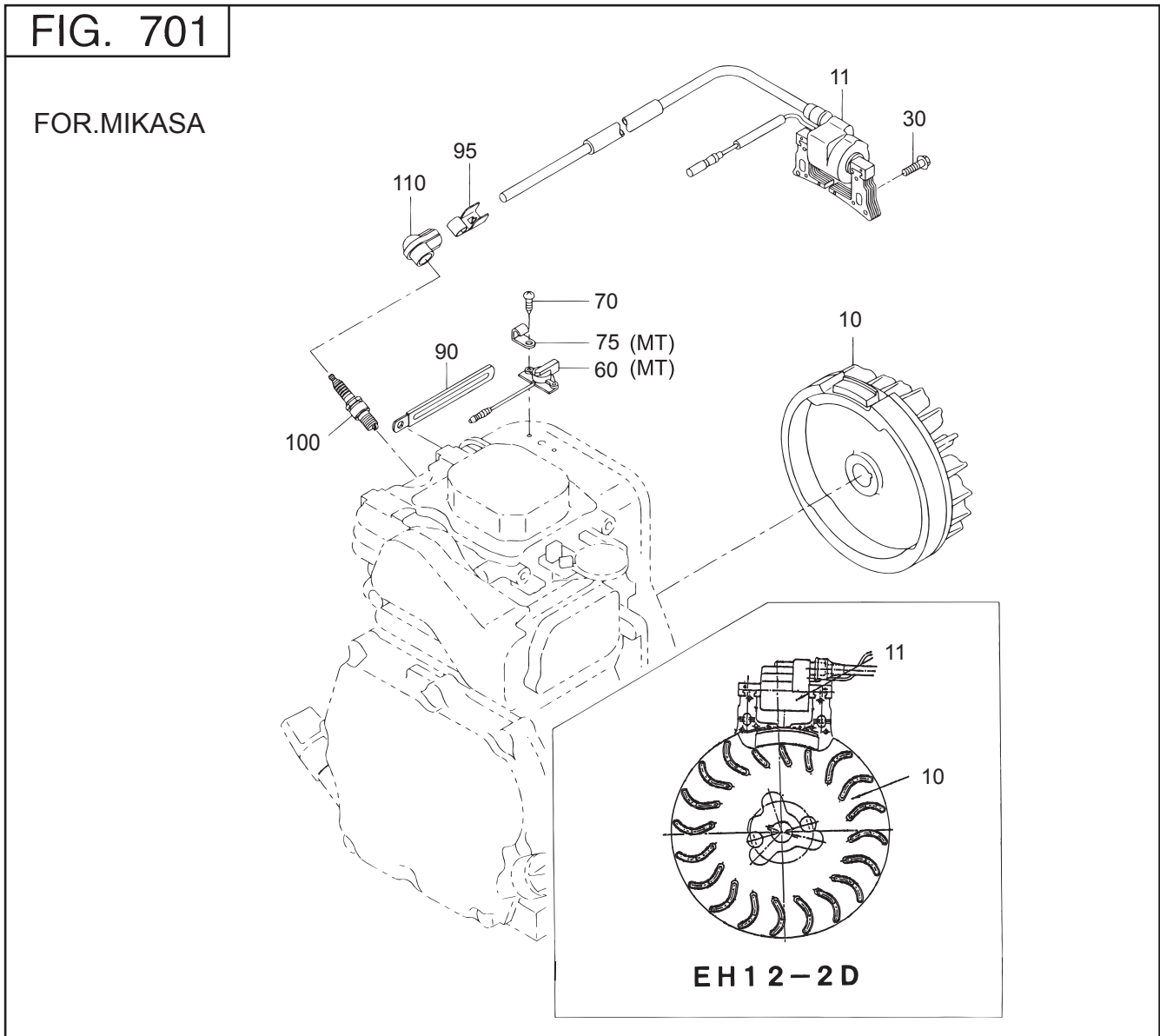
2010/3/31

6-3. CARBURETOR AY (NEW) W/PUMP,PRIMER

** BKI **

REF NO.	PART NO.	PART NAME	Q' TY	MRK	MK2	REMARKS
210	252-62573-00	CARBURETOR AY W/P/MTX, EH	1			
900	501-60040-10	SCREEN INLET	1			
901	252-62616-08	COVER, PRIMER PUMP	1			
902	252-62613-08	COVER PUMP	1			
903	252-62612-08	THROTTLE SHAFT/EH12-2D	1			
904	161-62335-08	VALVE THROTTLE/EH12-2D	1			
905	284-62603-08	SHAFT AY CHOKE/EH12-2D	1			
906	510-60450-40	CLIP	1			
907	284-62604-08	VALVE, CHOKE/EH12-2D	1			
908	161-62552-08	VALVE, INLET NEEDLE/EH12-2	1			
909	147-62584-08	BALL /EH12-2D	1			
910	161-62380-08	GASKET PLUG/EH12-2D	1			
911	252-62618-08	GASKET, METALING DIA	1			
912	252-62610-08	DIAPHRAGM PUMP/EH12-2D	1			
914	252-62617-08	DIAPHRAGM AY, METALIN	1			
915	252-62619-08	SCREW	1			
916	252-62620-08	SCREW AY	4			
917	147-62573-08	SCREW	2			
918	284-62600-08	SCREW /EH12-2D	1			
919	161-62454-08	SPRING, IDLE ADJUST	1			
920	161-62451-08	SPRING, METALIING LEVER	1			
921	147-62583-08	SPRING, CHOKE/EH12-2D	1			
925	161-62368-08	PIN, METALIING LEVER	1			
926	161-62369-08	LEVER, METALIING/EH12-2D	1			
927	147-62575-08	PLUG	1			
929	161-62385-08	SCREW, IDLE ADJUST/EH12-2D	1			
943	252-62611-08	SPRING PUMP/EH12-2D	1			
945	161-62551-08	STOPPER, THROTTLE	1			
946	252-62603-08	LEVER, THROTTLE/EH12-2D	1			
947	161-62553-08	SCREW VALVE/EH12-2D	2			
948	252-62602-08	SPACER, THROTTLE LEVER	1			
949	147-62586-00	SEAL, DUST	2			
950	106-62576-08	SCREW AY	1			
961	252-62614-08	BODY ASSY, AIR PURGE	1			
962	252-62615-08	PUMP PRINMER	1			

7. ELECTRIC DEVICE / エレクトリック デバイス



EH122

EH12-2D (for MT-74FA/84FA,MTX-80/90,75/85)


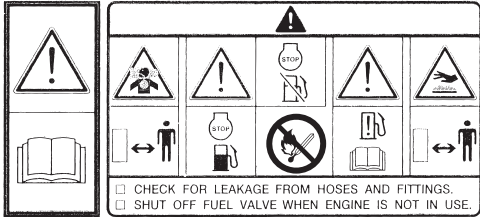
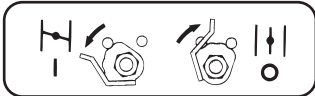

2010/4/1

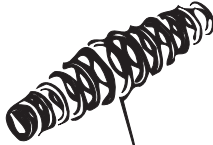
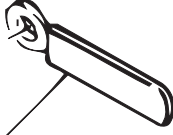
7. ELECTRIC DEVICE

** AMG **

REF NO.	PART NO.	PART NAME	Q' TY	MRK	MK2	REMARKS
10	268-79332-01	FLYWHEEL CP /EH12-2D	1			
11	269-79430-21	IGNITION COIL CP	1			
30	001-14062-50	BOLT AND WASHER ASSY	2			
60	066-00004-80	STOP SWITCH AY	1			MT
70	015-00400-90	TAPPING SCREW	2			
75	056-60300-10	CLAMP	1			MT
90	056-60002-50	CLAMP	1			
95	065-90000-10	PLUG TERMINAL	1			
100	065-01405-80	SPARK PLUG BR6ES	1			
110	230-75101-13	SPARK PLUG CAP	1			

8. LABEL AND ACCESSORIES / ラベル, アクセサリーズ

<h1>LABEL</h1>	FOR.MIKASA				
	101		110		
(MT)		103	(MTX)		105

<h2>FIG,1000</h2>	MTX-80/90,75/85		
	201		202

EH12-2D (for MT-74FA/84FA,MTX-80/90,75/85)

2010/4/1

LABEL AND ACCESSORIES

**** AMI ****

REF NO.	PART NO.	PART NAME	Q' TY	MRK	MK2	REMARKS
101	073-20045-20	LABEL, OIL CAUTION	1			
103	073-20050-20	LABEL CHOKE	1			MT-74FA/84FA
105	073-20044-30	LABEL (CHOKE)	1			MTX
110	073-20057-60	LABEL (WARNING) /EXP	1			
201	083-00000-10	COIL SPRING	1			MTX
202	226-75101-03	CLAMP	1			MTX



MIKASA SANGYO CO.,LTD.

HEAD OFFICE

NO. 4-3. 1-CHOME, SARUGAKU-CHO, CHIYODA-KU
TOKYO, JAPAN